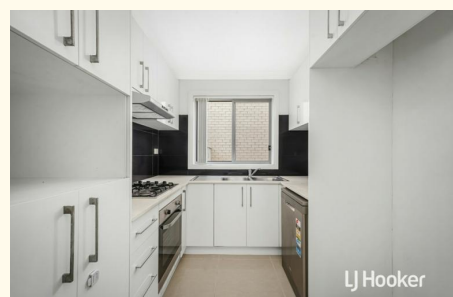




LJ Hooker


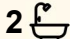



LJ Hooker



LJ Hooker

15/570 Sunnyholt Road, Stanhope Gardens

4  2  2 

**SOLD FOR COMPLEX RECORD  
BY YOUR AREA SPECIALIST!!  
CALL BRAEDY MILLEDGE AT  
0404 160 447 FOR A FREE  
MARKET APPRAISAL!**

**FOR SALE**  
SOLD BY LJ HOOKER

**AGENTS**

Braedy Milledge  
0404 160 447  
braedy.milledge@ljhooker.com.au

**AGENCY**

LJ Hooker Schofields | Riverstone  
02 9157 4077

Vidisha Chouhan from LJ Hooker Schofields is proud to present this contemporary family townhouse perfect for an easy-care lifestyle. Crafted with modern comfort and low-maintenance living in mind, this home is nestled within a family-friendly complex where residents can also enjoy access to a communal BBQ area. Enjoy excellent convenience boasting a location within walking distance to bus transport, local parks and Parklea Markets plus close proximity to schools, shopping and major transport links ensuring effortless connectivity.

**Features:**

- Stylish kitchen with gas cooking, new Haier dishwasher, plentiful cupboards
- Living room upon entry connects through to the open meals area
- Four well-scaled bedrooms all fitted with built-in robes

All information contained therein is gathered from relevant third parties sources. We cannot guarantee or give any warranty about the information provided. Interested parties must rely solely on their own enquiries.

 **LJ Hooker**

- Master bedroom featuring private ensuite
- Two bathrooms, main with separate shower and bath
- Additional powder room downstairs for convenience
- Ducted air conditioning for year-round comfort
- Freshly painted and new LED colour changing down lights throughout
- Recent laminate flooring installed upstairs and staircase
- Spacious covered alfresco area with decking and blinds for all-weather entertaining
- Fully fenced rear yard with low-maintenance grassed area
- Single automatic garage with internal access
- Additional parking space plus visitor parking

#### Location Highlights:

- 200m approx to T-way bus stop
- 400m approx to Parklea Markets
- 800m approx to direct bus services to Sydney CBD and Parramatta
- 1.7km approx to Stanhope Village Shopping Centre
- 1.7km approx to Blacktown Leisure Centre
- 2.4km approx to Kellyville Metro Station
- 2.6km approx to Bella Vista Metro Station

#### Schools & Education:

- 1.2km approx to Parklea Public School
- 2.2km approx to Holy Cross Primary School
- 2.7km approx to Glenwood High School

• \*\*\*

**DISCLAIMER:** This advertisement contains information provided by third parties. While all care is taken to ensure otherwise, LJ Hooker Schofields does not make any representation as to the accuracy of the information contained in the advertisement, does not accept any responsibility or liability, and recommends that any client make their own investigations and inquiries. All images are indicative of the property only.

## MORE DETAILS

Property ID	4EZHXY
Property Type	Townhouse
Including	Ensuite
	Air Conditioning
	Toilets (3)
	Built-in-Robes

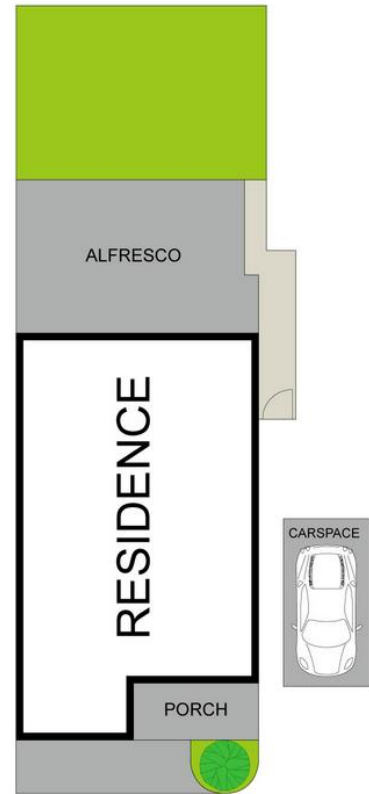
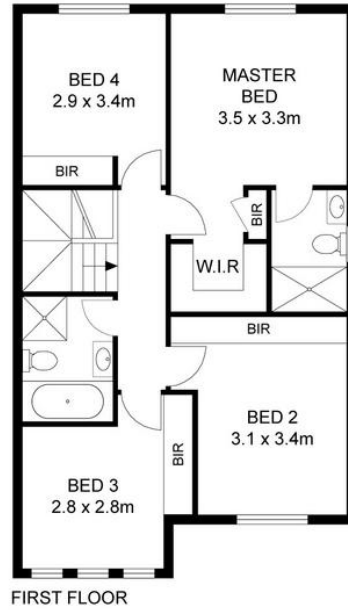
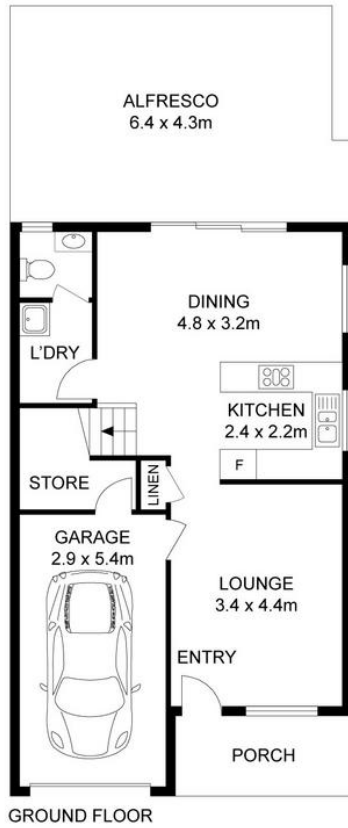
### Braedy Milledge 0404 160 447

Partner | [braedy.milledge@ljhooker.com.au](mailto:braedy.milledge@ljhooker.com.au)

### LJ Hooker Schofields | Riverstone 02 9157 4077

Shop 35, 111 Railway Terrace, SCHOFIELDS NSW 2762  
[schofields.ljhooker.com.au](mailto:schofields.ljhooker.com.au) | [schofields@ljhooker.com.au](mailto:schofields@ljhooker.com.au)





0 1 2 3 4 5  
SCALE (METRES)

## 15/570 Sunnyholt Road, Stanhope Gardens

**Disclaimer:** Floor plans and site plans are intended as a guide only. They are not part of any legal document or title and are subject to errors, omission, and inaccuracies and should not be used as reference. Sizes and dimensions are approximate only. Interested parties should make their own enquiries. Floor plan by: Sync Studios Pty Ltd

 **LJ Hooker**

All information contained therein is gathered from relevant third parties sources.  
We cannot guarantee or give any warranty about the information provided.  
Interested parties must rely solely on their own enquiries.

 **LJ Hooker**