



33 Gatwick Street, Stafford Heights

3 1 1

North-Facing, Rear Deck; Elevated with Lovely Green Outlook.

FOR SALE
Offers over \$1,249,000

AGENTS

Simon Brigden
0414 869 704
simon.brigden@ljhooker.com.au

AGENCY

LJ Hooker Stafford
(07) 3357 1888

Ornate cornice, pendant lighting, polished hardwood floors: all features found in this lovely post-war home. A north-facing backyard and large timber deck combine to create a lovely al fresco space. Enter from the street through double doors which allow in lovely natural light and air. The house feels warm, spacious, and homely.

Large rooms complement these aesthetic features. Well-proportioned bedrooms are smartly separated from an open plan lounge-dining room. A spacious, updated kitchen is perfect for entertaining and adjoins the indoor and outdoor spaces. Downstairs is a great space with powder room too.

Features include:

- Level entry-way from the street.
- Polished hardwood floors throughout.
- Updated kitchen with dishwasher.
- Updated bathroom.
- Air-conditioning and fans.
- North-facing timber deck with skylights - a great al fresco space.

All information contained therein is gathered from relevant third parties sources.
We cannot guarantee or give any warranty about the information provided.
Interested parties must rely solely on their own enquiries.

LJ Hooker

- Additional powder room downstairs.
- Large open-plan lounge/dining.
- Fully fenced yard.
- Single carport.
- 604sqm block with 18.1m frontage.
- Walking distance to boutique shops on Farrant St.
- Elevated and flood-free position.
- Small-lot sub-division potential (subject to Brisbane City Council approval).

Call Simon for the comparable sales and to see how you can call this house a home.

MORE DETAILS

Property ID	1DM0F4N
Property Type	House
Land Area	604 m2

Simon Brigden 0414 869 704

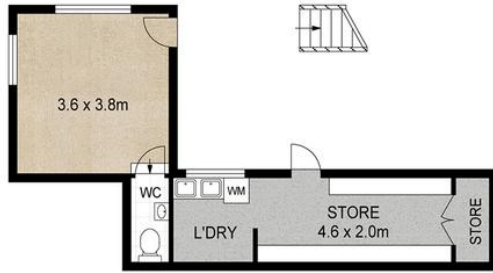
Lead Salesperson | simon.brigden@ljhooker.com.au

LJ Hooker Stafford (07) 3357 1888

205 Stafford Road, STAFFORD QLD 4053
stafford@ljhooker.com.au | stafford@ljhooker.com.au



33 Gatwick St, Stafford Heights



LOWER LEVEL



UPPER LEVEL

INTERNAL : 137m²

EXTERNAL : 44m²



THIS FLOOR PLAN IS INDICATIVE OF LAYOUT WITH APPROXIMATE DIMENSIONS TO BE USED AS A VISUAL REPRESENTATION FOR MARKETING PURPOSES ONLY. INTERESTED PERSONS SHOULD RELY ON THEIR OWN ENQUIRIES.