



24 Maryland Street, Stafford Heights

Spacious & Elevated.

This lovely home contains so many elements that make Stafford Heights properties sought after. A large, east-facing and open plan living area is defined by polished hardwood floors. This large area is perfect for entertaining and enjoying meal time. A fully renovated kitchen and bathroom provide excellent creature comforts. Gas cooking in the kitchen is an excellent feature. A covered front patio and open rear patio provide two great al fresco spaces.

The level rear backyard is a spacious and family-friendly place to enjoy Brisbane's summers with the addition of a trampoline or pool. Secure car-parking is available beneath the home, as is secure storage. The home also has sub-division potential (STCA of course).

Features include but not limited to:

- Fenced and retained 607sqm block.
- Renovated kitchen with gas cooking.
- Renovated bathroom with floor-to-ceiling tiling.
- Polished hardwood floors through primary living area.
- Fans throughout.
- Covered front patio and open rear patio.
- Level backyard.
- Secure garage with storage.
- Quiet residential street.

All information contained therein is gathered from relevant third parties sources. We cannot guarantee or give any warranty about the information provided. Interested parties must rely solely on their own enquiries.

3  1  2 

FOR SALE
Open to Offers

VIEW
Sat 16th May @ 10:30AM - 11:00AM

AGENTS
Simon Brigden
0414 869 704
simon.brigden@ljhooker.com.au

AGENCY
LJ Hooker Stafford
(07) 3357 1888

 **LJ Hooker**

- Small-lot sub-division potential (STCA).
- Craigslea State High School catchment.
- Proven rental return.

Contact Simon to see how you can call this house, home.

MORE DETAILS

Property ID	1EZKF4N
Property Type	House
Land Area	607 m2
Including	Balcony Dishwasher Outdoor Entertaining Built-in-Robes

Simon Brigden 0414 869 704

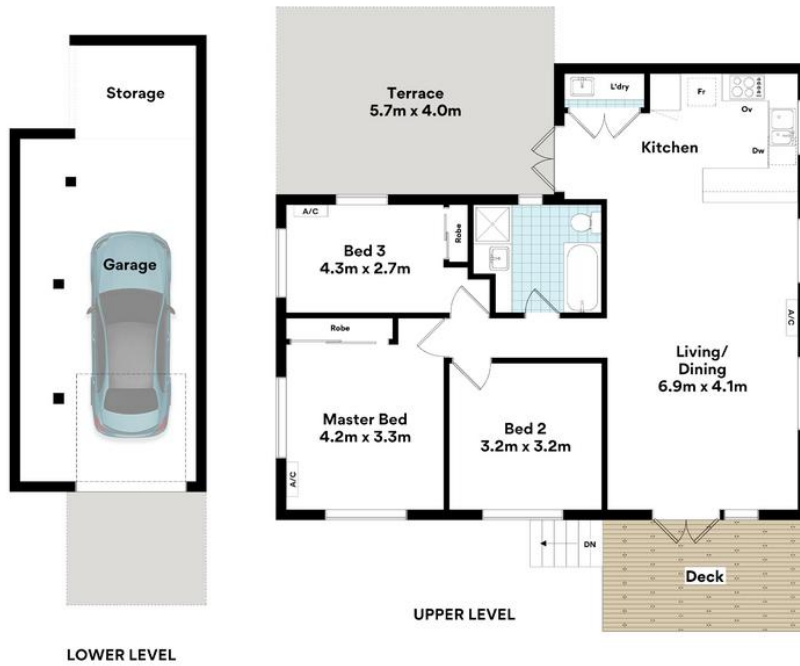
Lead Salesperson | simon.brigden@ljhooker.com.au

LJ Hooker Stafford (07) 3357 1888

205 Stafford Road, STAFFORD QLD 4053
stafford@ljhooker.com.au | stafford@ljhooker.com.au



All information contained therein is gathered from relevant third parties sources.
We cannot guarantee or give any warranty about the information provided.
Interested parties must rely solely on their own enquiries.



24 Maryland St, Stafford Heights



FLOOR AREA SIZES

Internal	94.8m ²
External	41.5m ²
Garage/Storage	38.6m ²
TOTAL	174.9m²

Whilst every attempt has been made to ensure the accuracy of the floor plans contained here, measurements of doors, windows, rooms and any other items are approximate and no responsibility is taken for any error, omission or misstatement.

These plans are for representation purposes only. Provided by primepixels.com.au