

St Lucia, 9/221 Sirfred Schonell Drive

Convenient & Modern Living at Visage

Located just a short walk from the University of Queensland, Visage offers the ideal student living environment. Enjoy unbeatable convenience with easy access to the university campus, public transport, shops, dining, and entertainment precincts. Plus, with the ferry nearby, you can be in Brisbane CBD within minutes!

This modern, partially furnished 2-bedroom apartment features:

Ducted air-conditioning throughout

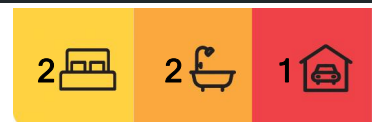
Double beds and study desks with chairs in both bedrooms

Spacious balcony with outdoor furniture

Stylish dining and living room furniture



Disclaimer: All information contained therein is gathered from relevant third parties sources. We cannot guarantee or give any warranty about the information provided. Interested parties must rely solely on their own enquiries.



For Sale
Please Call

View
ljhooker.com.au/1E1HYT

Contact
Eddie Singh
0450534643
eddie.singh@ljhooker.com.au

LJ Hooker St Lucia
(07) 3371 2126

Fully equipped kitchen with gas burner stove, microwave, fridge/freezer, and more

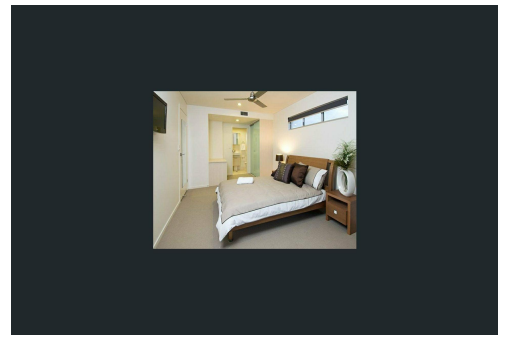
Secure car parking for one vehicle

Don't miss out on this fantastic opportunity to live in a vibrant, convenient location with everything you need at your doorstep!

Strata - \$1,627 per qtr.

Approx Sinking Fund Balance - \$115,000

Rates - \$506 per qtr approx



More About this Property

| | |
|----------------------|---|
| Property ID | 1E1HYT |
| Property Type | Unit |
| Including | Air Conditioning Balcony Dishwasher Outdoor Entertaining Built-in-Robes Fully Fenced |

Eddie Singh 0450534643

Principal/Auctioneer | eddie.singh@ljhooker.com.au

LJ Hooker St Lucia (07) 3371 2126

Shop 2, 228 Hawken Drive, ST LUCIA QLD 4067
stlucia.ljhooker.com.au | hello.stlucia@ljhooker.com.au



LJ Hooker St Lucia
(07) 3371 2126

Disclaimer: All information contained therein is gathered from relevant third parties sources. We cannot guarantee or give any warranty about the information provided. Interested parties must rely solely on their own enquiries.

