



25 Hillside Terrace, St Lucia

## Luxurious Family Living in Exclusive St Lucia Locale

If you're chasing a home that blends modern luxury with a peaceful, natural setting, this is one worth your attention. Designed for those who value privacy without sacrificing convenience, it offers a resort-style feel just moments from the CBD.

Positioned in an elevated, north-facing setting, the home captures sweeping views across the golf course and Brisbane River. Filled with natural light and cooled by prevailing breezes, it delivers a sense of space and tranquillity throughout.

Thoughtfully designed for relaxed family living, the residence features four generous bedrooms plus a study, including a luxurious master retreat complete with a beautifully appointed ensuite and an oversized walk-in robe. Multiple living areas across both levels, along with two additional bathrooms, provide flexibility and comfort for growing families.

Set within one of St Lucia's most tightly held pockets, this home is just a short walk to highly regarded schools and The University of Queensland, and only 7km from the CBD. Spend your weekends enjoying riverside walks, or head to St Lucia Golf Course for great

4 3 2

**FOR SALE**  
FOR SALE

**VIEW**  
By Appointment

**AGENTS**  
Eddie Singh  
0450534643  
eddie.singh@ljhooker.com.au

AJ Singh  
0451 124 887  
aj.singh@ljhooker.com.au

**AGENCY**  
LJ Hooker St Lucia  
(07) 3371 2126

All information contained therein is gathered from relevant third parties sources. We cannot guarantee or give any warranty about the information provided. Interested parties must rely solely on their own enquiries.

LJ Hooker

food and wine, all just moments from your doorstep.

Entertaining is effortless, with stunning timber-framed bi-fold doors opening to a generous outdoor area, framed by private rock walls and landscaped gardens.

Set on an impressive 837m<sup>2</sup> parcel, this is a rare opportunity to secure a premium home in an exceptional location. Property Features:

Elevated north-facing position with golf course and Brisbane River views  
837m<sup>2</sup> block in a prestigious St Lucia location  
Four spacious bedrooms, including luxury master with ensuite and oversized walk-in robe  
Multiple living areas across two levels and two additional bathrooms  
Seamless indoor-outdoor flow with timber bi-fold doors  
Expansive outdoor entertaining area with private rock walls and gardens  
Ducted air conditioning throughout and vacuum-aid system  
Caesar stone bench top and a gas chef's oven with walk-in pantry  
Home security system

Location Highlights:

Within Ironside State School catchment  
Approx. 4-minute walk to The University of Queensland  
Approx. 2.2km to St Peters Lutheran College  
Close to riverside walking tracks and parklands  
Easy access to Brisbane CBD (approx. 7km)

Disclaimer:

All information is provided in good faith and has been obtained from sources believed to be reliable; however, no warranty or representation is made as to its accuracy, completeness, or correctness. Measurements, figures, floor plans, images, photographs, and descriptions are indicative only. Photographs may include virtual staging, digital enhancement, or altered furnishings for illustrative purposes.

Bective Pty Ltd t/a LJ Hooker St Lucia and the seller accept no liability for any loss or damage arising from reliance on this information.

Interested parties must rely on their own enquiries, inspections, and independent legal, financial, and building advice prior to proceeding with any purchase

## MORE DETAILS

Property ID 1ANHYT  
Property Type House  
House Size 345 m2  
Land Area 837 m2  
Including Study  
Air Conditioning  
Ducted Cooling  
Ducted Heating  
Alarm  
Courtyard  
Balcony  
Dishwasher  
Outdoor Entertaining  
Floorboards  
Built-in-Robes  
Secure Parking  
Fully Fenced  
Remote Garage  
Water Tank

### Eddie Singh 0450534643

Principal/Auctioneer | [eddie.singh@ljhooker.com.au](mailto:eddie.singh@ljhooker.com.au)

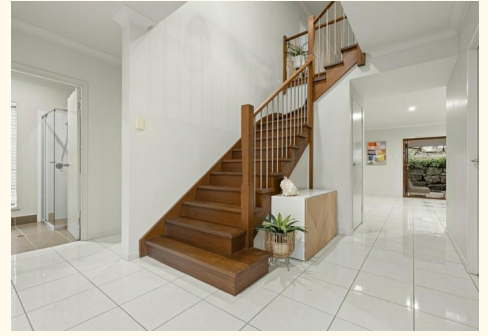
### AJ Singh 0451 124 887

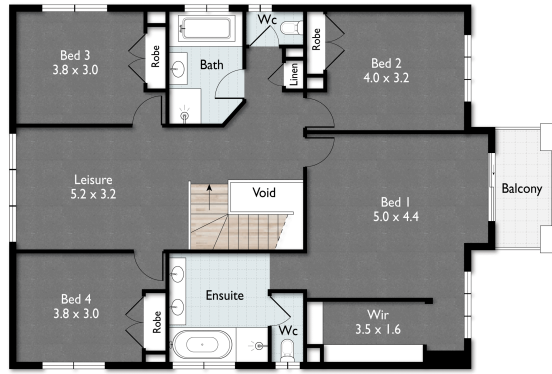
Sales Associate to Eddie Singh | [aj.singh@ljhooker.com.au](mailto:aj.singh@ljhooker.com.au)

### LJ Hooker St Lucia (07) 3371 2126

Shop 2, 228 Hawken Drive, ST LUCIA QLD 4067

[stlucia.ljhooker.com.au](http://stlucia.ljhooker.com.au) | [hello.stlucia@ljhooker.com.au](mailto:hello.stlucia@ljhooker.com.au)

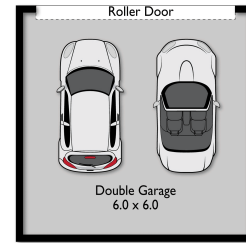




First Floor



Ground Floor



(Not In Position)

5 3 2 345sqm



Scale in meters. Indicative only. Dimensions are approximate. All information contained herein is gathered from sources we believe to be reliable. However, we cannot guarantee its accuracy and interested persons should rely on their own enquiries.