



58 Tasman Highway, St Helens

Old World Charm Awaits..

Step into your own private oasis set on an expansive 3,600sqm block with breathtaking water views. A rare offering where timeless elegance meets tranquil luxury, this exceptional estate is enveloped by exquisitely landscaped gardens, creating a secluded sanctuary of beauty and serenity.

Set across two separate titles, this remarkable property presents not only an extraordinary lifestyle opportunity but also added flexibility and long-term investment value.

Boasting two distinct dwellings, it is perfectly suited for extended family living, hosting guests in complete comfort, or securing a premium income stream.

The main residence exudes old-world charm, highlighted by rich wood finishings and generous proportions throughout. Two elegant living spaces cater effortlessly to both grand entertaining and intimate relaxation. The beautifully renovated kitchen is thoughtfully appointed to blend classic character with modern refinement - an inspiring space to explore your culinary creativity.

Three spacious bedrooms provide comfort and retreat, including a luxurious master suite complete with a private ensuite and dedicated study, offering both privacy and practicality.

Privately positioned, the separate flatlet features two bedrooms, a comfortable living area, its own facilities, and a dedicated carport - ideal for independent living, guest accommodation, or executive rental

5 🏠 3 🚗 3 🚗

FOR SALE

\$1,250,000

VIEW

By Appointment

AGENTS

Gayle MacDonald

0424 831 915

gmacdonald.sthelens@ljhooker.com.au

AGENCY

LJ Hooker St Helens

(03) 6376 2300

All information contained therein is gathered from relevant third parties sources.

We cannot guarantee or give any warranty about the information provided.

Interested parties must rely solely on their own enquiries.

 **LJ Hooker**

potential.

With space, serenity, spectacular views, and the rare advantage of two titles, this unique property offers exceptional versatility in a truly picturesque setting.

MORE DETAILS

| | |
|---------------|----------------------|
| Property ID | Q3GFN1 |
| Property Type | House |
| Land Area | 3708 m2 |
| Including | Ensuite |
| | Air Conditioning |
| | Toilets (4) |
| | Dishwasher |
| | Outdoor Entertaining |
| | Built-in-Robes |
| | Fully Fenced |

Gayle MacDonald 0424 831 915

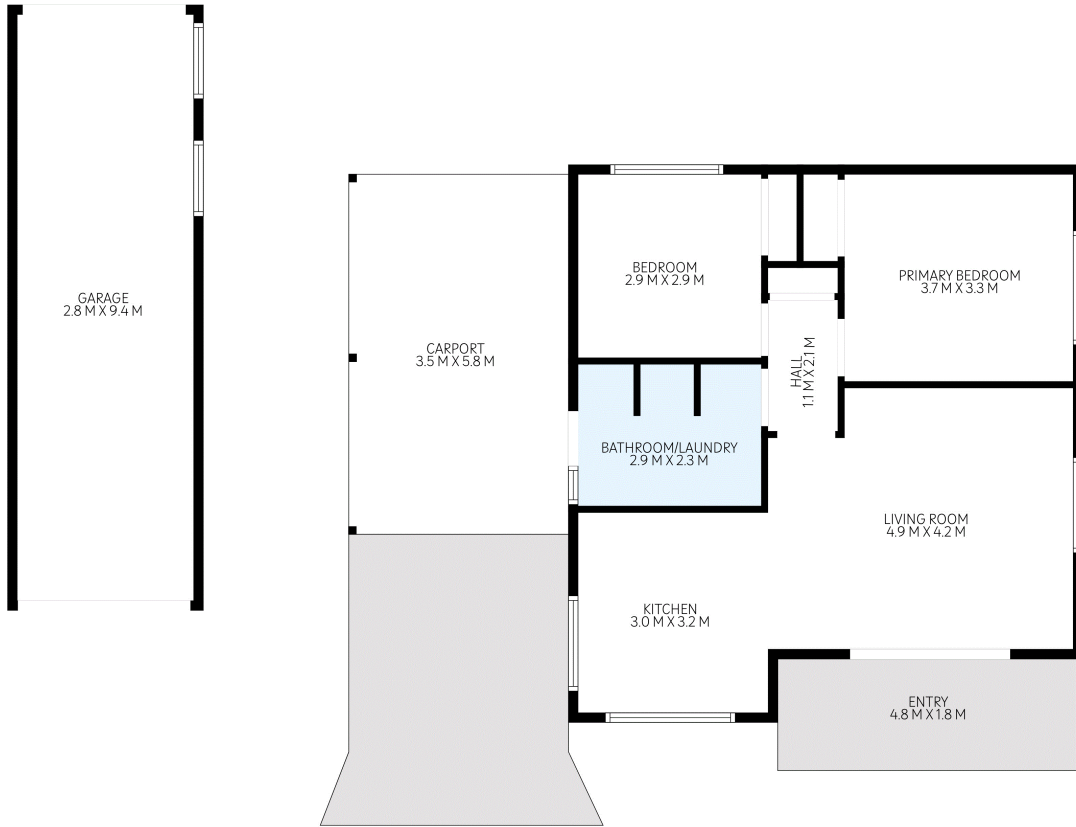
Property Consultant | gmacdonald.sthelens@ljhooker.com.au

LJ Hooker St Helens (03) 6376 2300

36 Cecilia Street, ST HELENS TAS 7216

sthelens.ljhooker.com.au | sthelens@ljhooker.com.au





58 Tasman Highway, St Helens - Unit

TOTAL: 72 m²
 1st floor: 72 m²

EXCLUDED AREAS: GARAGE: 27 m², CARPORT: 20 m², WALLS: 10 m²

FLOOR PLAN IS INDICATIVE OF THE LAYOUT. DIMENSIONS ARE HIGHLY RELIABLE NOT GUARANTEED

