



## St Helens, 25598 Tasman Highway

Acreage lifestyle close to town

Nestled amidst the serene East Coast landscape, 25598 Tasman Highway in St Helens presents a warm, inviting family home that boasts both charm and functionality. This splendid brick - constructed house, crowned with a durable Colourbond roof, offers a tranquil retreat on a substantial block of 8.9 acres.

Designed thoughtfully with family living in mind, this residence features four generously sized bedrooms, each adorned with built-in robes for ample storage. The second bedroom extends onto a charming decking area, providing a private space to bask in the surrounding natural beauty. Moreover, the flexible layout includes a fourth bedroom that can also serve as an additional lounge room, catering to your family's changing needs.

Two modern bathrooms ensure convenience for all, while the home's heart is the open-plan kitchen, dining, and living space, basked in natural light thanks to multiple skylights. This area, equipped with a gas heater, reverse cycle air conditioning, and a cozy wood fire,

4

2

4

**For Sale**  
\$1,100,000

**View**  
By Appointment

**Contact**  
**Kate Spilsbury**  
0419 683 904  
kspilsbury.sthelens@ljhooker.com.au



**LJ Hooker St Helens**  
**(03) 6376 2300**

**Disclaimer:** All information contained therein is gathered from relevant third parties sources. We cannot guarantee or give any warranty about the information provided. Interested parties must rely solely on their own enquiries.



offers year-round comfort.

Outdoors, the property is a horticultural delight with established orchards, raised garden beds, and a chook house. Equestrian enthusiasts will appreciate the stables set within the fenced land, making it an ideal setting for both equine and agricultural pursuits.

Entertaining is a breeze with an undercover area that's perfect for hosting gatherings, large or small. Town water and septic services ensure modern conveniences, while two parking spaces provide ample vehicle storage.

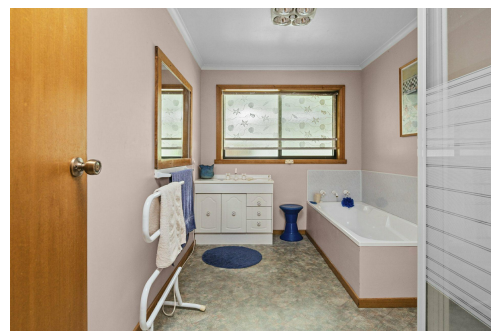
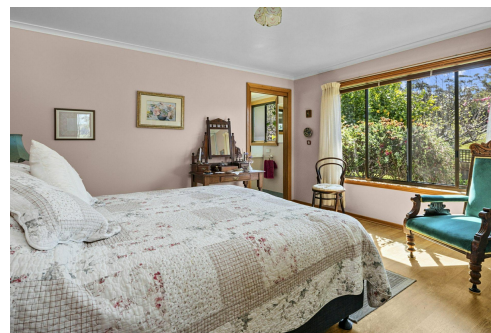
This property is not just a house but a lifestyle opportunity for those seeking a family home that combines space, privacy, and the potential for self-sufficiency within the stunning Tasmanian countryside.

## More About this Property

|               |   |
|---------------|---|
| Property ID   | PF3FN1  |
| Property Type | House   |
| House Size    | 148 m <sup>2</sup>  |
| Land Area     | 8.9 acre  |
| Including     | Ensuite<br>Air Conditioning<br>Toilets (2)<br>Courtyard<br>Deck<br>Built-in-Robes<br>Secure Parking<br>Water Tank |

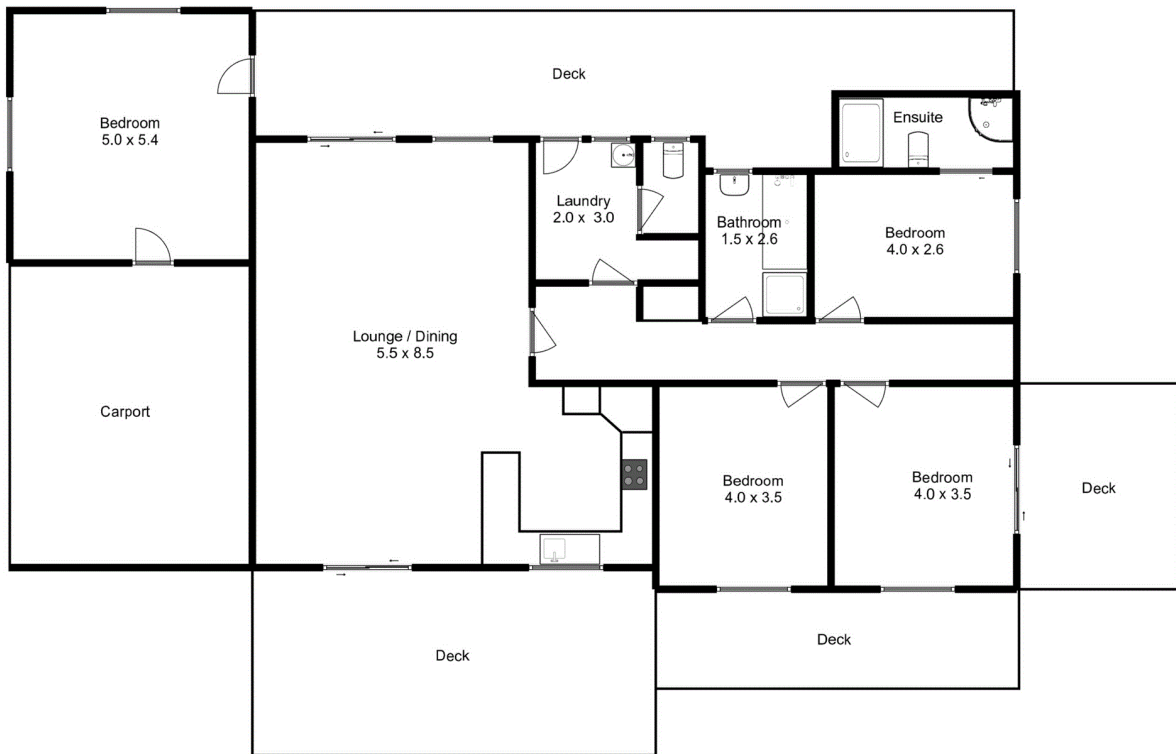
**Kate Spilsbury 0419 683 904**  
Principal | [kspilsbury.sthelens@ljhooker.com.au](mailto:kspilsbury.sthelens@ljhooker.com.au)

**LJ Hooker St Helens (03) 6376 2300**  
36 Cecilia Street, ST HELENS TAS 7216  
[sthelens.ljhooker.com.au](mailto:sthelens.ljhooker.com.au) | [sthelens@ljhooker.com.au](mailto:sthelens@ljhooker.com.au)



**Disclaimer:** All information contained therein is gathered from relevant third parties sources. We cannot guarantee or give any warranty about the information provided. Interested parties must rely solely on their own enquiries.

**LJ Hooker St Helens**  
**(03) 6376 2300**



**NOT DRAWN TO SCALE**

This floor plan is intended as a guide only and information contained within is approximate. Purchasers are advised to verify the information. Neither the vendor, listing agent or floor plan provider are responsible for any omissions.

25598 Tasman Highway, St Helens.