



St Georges Basin, 39/35 The Basin Road

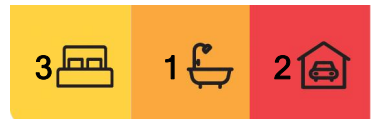
Holiday Feels All Year Round

Recognised as one of the most attractive coastal living estates along the South Coast, Basin Shores is exactly what you've been looking for! And here we have the perfect lifestyle choice, an immaculate cottage that is beautifully presented offering relaxed low maintenance living only 350m to the water's edge of St Georges Basin. Whether you are a first home buyer, investor, holiday maker or retiree – we are confident you will fall in love with living in this beautifully presented home.

- Your home will be your own personal sanctuary within a private and secure community estate
- Easy access ramp to beautiful sunbathed front verandah
- Spacious and light filled living room
- Neutral colour theme throughout, air conditioning, ceiling fans
- Sleek modern kitchen with quality appliances, 20mm stone bench with adjoining dining room



Disclaimer: All information contained therein is gathered from relevant third parties sources. We cannot guarantee or give any warranty about the information provided. Interested parties must rely solely on their own enquiries.



For Sale
\$550,000 - \$599,000

View
ljhooker.com.au/UZWHQZ

Contact
Martin Merritt
0412 424 226
martin.merritt@ljhwollongong.com.au

LJ Hooker Wollongong | Corrimal | Shellharbour
(02) 4229 8600

- Modern bathroom and internal laundry with second w/c
- Three good sized bedrooms all with built in robes
- Carport with second covered area, storage shed

This impressive estate features fantastic community facilities, including:

- Tennis courts
- Bowling green
- Indoor heated swimming pool
- Community BBQ areas
- Kids playground
- Landscaped gardens

Desirably placed offering a lifestyle of leisure and relaxation only moments to many of the pristine beaches of Jervis Bay, Vincentia shopping village and schools.

* Please note that images contain virtual furniture

More About this Property

Property ID	UZWHQZ
Property Type	House

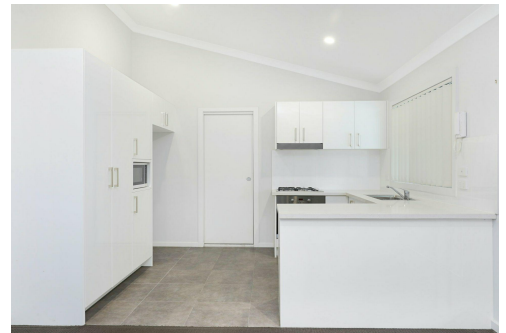
Martin Merritt 0412 424 226

Principal | Licenced Real Estate Agent | martin.merritt@ljhwollongong.com.au

LJ Hooker Wollongong | Corrimal | Shellharbour (02) 4229 8600

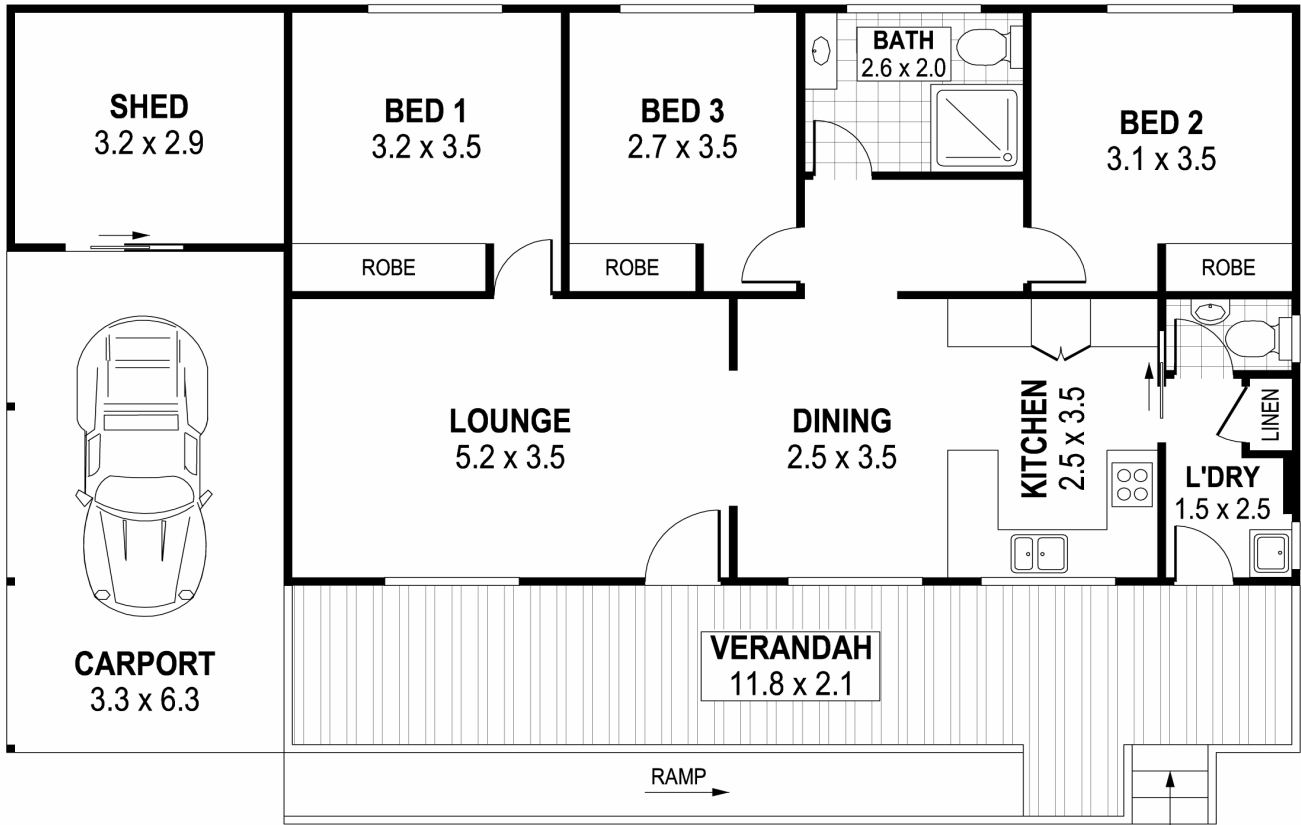
69 Kembla Street, WOLLONGONG NSW 2500

wollongong.ljhooker.com.au | wollongong@ljhooker.com.au



Disclaimer: All information contained therein is gathered from relevant third parties sources. We cannot guarantee or give any warranty about the information provided. Interested parties must rely solely on their own enquiries.

LJ Hooker Wollongong | Corrimal | Shellharbour (02) 4229 8600



INTERNAL FLOOR AREA APPROX: 85m²

TOTAL FLOOR AREA APPROX: 141m²

Disclaimer: Design Junkies Graphic Imagery whilst preparing this document for the use by The Real Estate Products Group Pty Ltd clients used our best endeavours to ensure that the information contained in this document is true and accurate, but accept no responsibility and disclaim all liability in respect of any errors, omissions, inaccuracies or mis-statements contained in this document. Prospective purchasers should make their own enquires to verify the information contained in this document.



Wollongong | Shellharbour | Corrimal



LJ Hooker Wollongong | Corrimal |
Shellharbour
(02) 4229 8600

Disclaimer: All information contained therein is gathered from relevant third parties sources. We cannot guarantee or give any warranty about the information provided. Interested parties must rely solely on their own enquiries.