

St Georges Basin, 105/35 The Basin Road

Coastal Living

At Basin Shores, life moves at the pace you want it too.

Whether you're into recreational activities such as tennis, fishing, boating and water sports, or simply relaxing by the pool with friends and family – Basin Shores has it all.

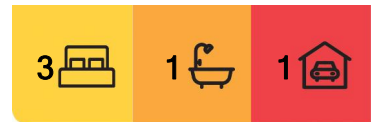
Only 2.5 hours drive south of Sydney and a 10km drive to Jervis Bay, Basin Shores provides the perfect location for the entire family to keep active and connect.

Located just 300 meters to the St Georges Basin waters edge and a short stroll to the township, Basin Shores is surrounded by some of Australia's most stunning beaches, lakes, estuaries, woodland and national parks so you can enjoy walking, birdwatching, swimming, fishing and canoeing.

Basin Shores offers an active and thriving community and a place to enjoy a fulfilling life.



Disclaimer: All information contained therein is gathered from relevant third parties sources. We cannot guarantee or give any warranty about the information provided. Interested parties must rely solely on their own enquiries.



For Sale
\$599,000 - \$649,000

View
By Appointment

Contact
Martin Merritt
0412 424 226
martin.merritt@ljhwollongong.com.au

LJ Hooker Wollongong | Corrimal | Shellharbour
(02) 4229 8600

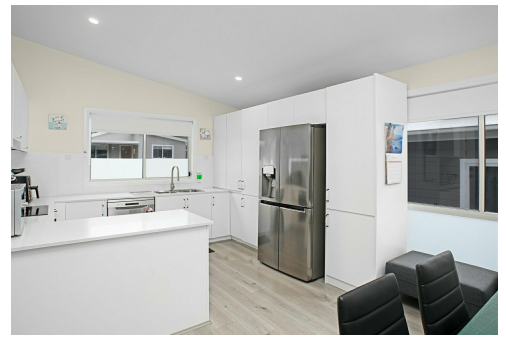
LOT 105 offers a spacious three bedroom design with tandem carport, verandah and ample parking for visitors. With contemporary and modern features, the home is spacious and light filled. Delivered with quality finishes and attention to detail, your expectations will be exceeded in both function and beauty.

Your home will be your own personal sanctuary, within a private and secure community estate. Seamless light filled interiors designed to combine comfort with a low maintenance lifestyle, sleek kitchen with quality appliances, modern tiled bathroom, large bedrooms and ample storage, all built to the highest of standards.

This impressive estate features fantastic community facilities, including:

- Tennis courts
- Bowling green
- Indoor heated swimming pool
- Community BBQ areas
- Kids playground
- Landscaped gardens

Recognised as one of the most attractive coastal living estates along the South Coast, Basin Shores is exactly what you've been looking for. Whether you're a first home buyer, investor, holiday maker or retiree – we are confident you will fall in love with everything Basin Shores has to offer.



More About this Property

Property ID	V5KHQZ
Property Type	House
Land Area	300 m2
Including	Air Conditioning Toilets (2) Balcony Dishwasher Outdoor Entertaining Floorboards Built-in-Robes Fully Fenced Solar Panels

Martin Merritt 0412 424 226

Principal | Licenced Real Estate Agent | martin.merritt@ljhwollongong.com.au

LJ Hooker Wollongong | Corrimal | Shellharbour (02) 4229 8600

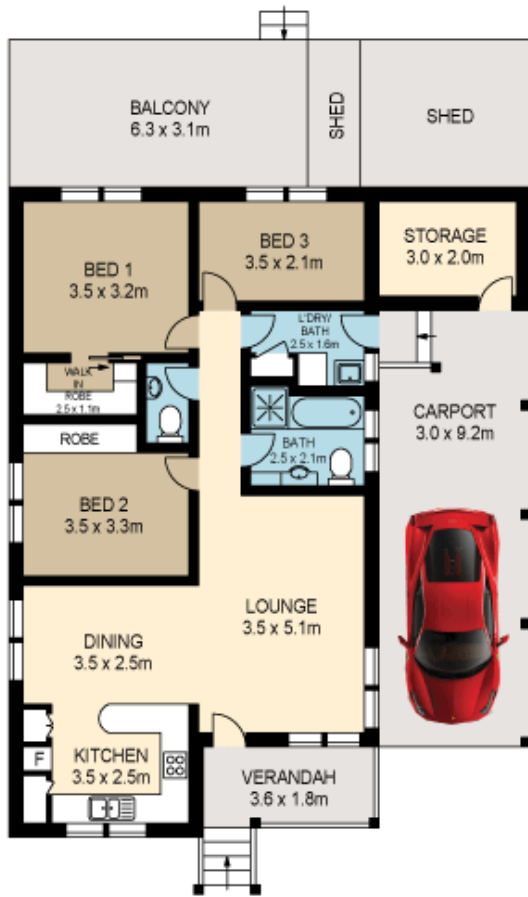
69 Kembla Street, WOLLONGONG NSW 2500

wollongong.ljhooker.com.au | wollongong@ljhooker.com.au

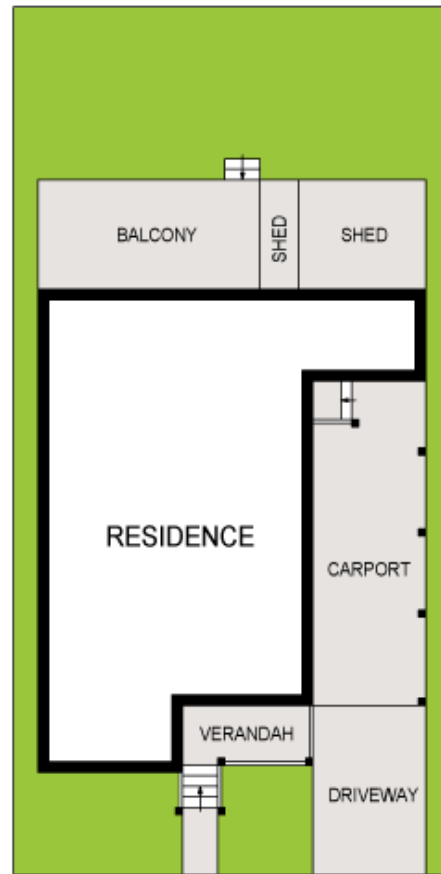


Disclaimer: All information contained therein is gathered from relevant third parties sources. We cannot guarantee or give any warranty about the information provided. Interested parties must rely solely on their own enquiries.

**LJ Hooker Wollongong | Corrimal |
Shellharbour
(02) 4229 8600**




www.assetphotographers.com.au



Please note these measurements are approximate only. The plans are intended as a rough guide for illustrative purpose. It is not warranted or guaranteed to be correct, nor is it part of the sale or rental contract.