

Squeaking Point, 26 Elphin Drive

Stunning Home and Glorious Shed

Positioned to capture the natural sunlight and designed to be energy efficient this home is both stylish and unique. The home can be configured to suit the family as a three bedroom with an office or a four-bedroom home. The kitchen, dining and lounge area is open plan with polished concrete floors throughout. The kitchen encompasses modern appliances and a nice big pantry. The large, double-glazed windows along the northern side capture awesome sunlight and have double blinds.

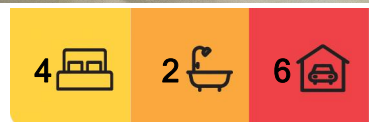
The main bathroom is huge, including a bath tub, large shower, vanity and integrates the laundry which really makes sense to me. The bedrooms have luxurious carpets and built-in robes. The main bedroom enjoys a beautiful en-suite with floor to ceiling tiling.

Now, let us talk about this shed. With four separate bays and three roller doors you can house all the toys and have multiple projects on the go at once. Two high doors allow a clearance of approximately 3.2 meters. With power, automatic lights and painted floor you will be the envy of all your friends.

Stacker doors open up to combine the indoor to the outdoor space with a private



Disclaimer: All information contained therein is gathered from relevant third parties sources. We cannot guarantee or give any warranty about the information provided. Interested parties must rely solely on their own enquiries.



For Sale
Offers over \$885,000

View
ljhooker.com.au/8CPHVM

Contact
Michael Ziegler
0409 764 219
michael.ziegler@ljhooker.com.au

Tyla Pyke
0439 228 888
tyla.pyke@ljhooker.com.au

LJ Hooker Devonport
0473 104 200

entertainment area perfect for the afternoon BBQ. Sitting on 4002 sqm of land the property is fully fenced and large enough to enjoy the space around you while being very manageable. The established gardens are beautifully manicured and well designed. Finished of with an internal access garage you will love this property as much as I do.

*The information contained herein has been supplied to us by sources which are considered reliable and we have no reason to doubt its accuracy. However, all interested parties should make their own enquiries to verify this information to be correct. All measurements are approximate and are for illustrative purposes only.

- Large 4 bay shed
- Rural but close to town
- 4002 square meters land
- Four Bedroom Two Bathroom
- Warm Sunny & Energy Efficient

More About this Property

Property ID	8CPHVM
Property Type	House
Land Area	4002 m2
Including	Toilets (2)

Michael Ziegler 0409 764 219

Licensee | michael.ziegler@ljhooker.com.au

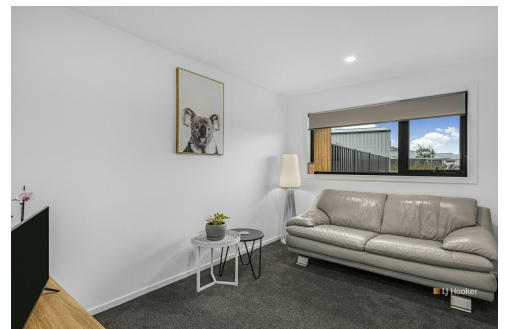
Tyla Pyke 0439 228 888

Property Representative | tyla.pyke@ljhooker.com.au

LJ Hooker Devonport 0473 104 200

16 Don Road, DEVONPORT TAS 7310

devonport.ljhooker.com.au | devonport@ljhooker.com.au



Disclaimer: All information contained therein is gathered from relevant third parties sources. We cannot guarantee or give any warranty about the information provided. Interested parties must rely solely on their own enquiries.

**LJ Hooker Devonport
0473 104 200**