



## Springwood, 54/93 Barbaralla Drive

Your Urban Sanctuary in Puistola

Welcome to your new home in the heart of Springwood! This charming townhouse offers a perfect blend of style and functionality, ensuring every square foot is utilized to its fullest potential.

Upon entering, you'll be greeted by an inviting living space that seamlessly connects with the modern kitchen. The open layout enhances the sense of space, making it perfect for both entertaining and everyday living.

Upstairs, you'll discover two well-appointed bedrooms with clever storage solutions, ensuring a clutter-free environment. The thoughtful design maximizes privacy and comfort, creating retreats that are both cozy and functional.

The outdoor space is a private oasis, perfect for enjoying a morning coffee. Low



**Disclaimer:** All information contained therein is gathered from relevant third parties sources. We cannot guarantee or give any warranty about the information provided. Interested parties must rely solely on their own enquiries.



**For Sale**

\$399,000 - \$429,000

**View**

[ljhooker.com.au/1VDXGRF](http://ljhooker.com.au/1VDXGRF)

**Contact**

**Kelsey Patterson**

0481 711 065

[sales6@ljhbeenleigh.com.au](mailto:sales6@ljhbeenleigh.com.au)

**Adam Randell**

0409 692 338

[adam.randell@ljhbeenleigh.com.au](mailto:adam.randell@ljhbeenleigh.com.au)

**LJ Hooker Beenleigh**  
**(07) 3807 7900**

maintenance landscaping ensures you can spend more time relaxing and less time on upkeep.

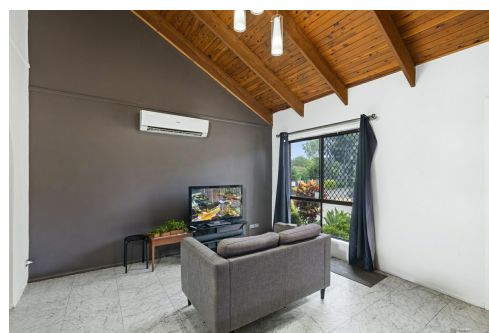
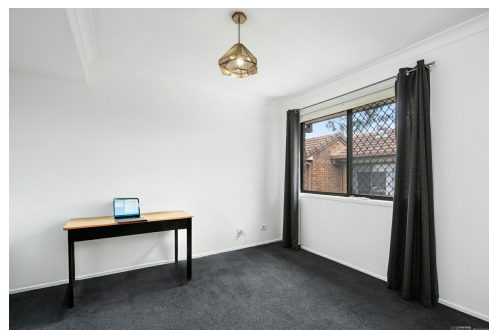
Conveniently located in the vibrant community of Springwood, this townhouse provides easy access to local amenities, schools, and parks. With its smart use of space and modern design, this property is an excellent opportunity for those seeking a comfortable and stylish home in a thriving neighborhood.

Don't miss the chance to make this well-utilized townhouse in Springwood your own - where every inch is designed for your lifestyle.

Your new property features:

- 2 Bedrooms
- Bathroom upstairs
- Additional toilet downstairs
- Single lock up garage + plenty visitor parks for family & friends
- Decent side courtyard with side pedestrian access
- Updated kitchen, laundry & bathrooms
- Aircon both upstairs & downstairs
- Loft area off bedroom for additional storage or a walk in robe
- Great location
- Body corp fees \$600 per quarter
- Rental appraisal \$420 - \$450

This property WILL NOT last long! If you are interested, please get in touch with Kelsey Patterson today 0481 711 065.



## More About this Property

<b>Property ID</b>	1VDXGRF
<b>Property Type</b>	Townhouse
<b>Land Area</b>	127 m <sup>2</sup>
<b>Including</b>	Toilets (1)

### Kelsey Patterson

Sales Consultant | sales6@ljhbeenleigh.com.au

### Adam Randell

Sales Consultant | adam.randell@ljhbeenleigh.com.au

### LJ Hooker Beenleigh (07) 3807 7900

14-16 James Street, BEENLEIGH QLD 4207

beenleigh.ljhooker.com.au | bso@ljhbeenleigh.com.au



**LJ Hooker Beenleigh**  
**(07) 3807 7900**

**Disclaimer:** All information contained therein is gathered from relevant third parties sources. We cannot guarantee or give any warranty about the information provided. Interested parties must rely solely on their own enquiries.



54/93 BARBARALLA DR, SPRINGWOOD

2 1 1

Internal: 101m<sup>2</sup> | External: 28m<sup>2</sup> | Total: 129m<sup>2</sup>

Whilst every attempt has been made to ensure the accuracy of the floor plan contained here, measurements of doors, windows, rooms and any other item are approximate and no responsibility is taken for any error, omission, or misstatement. This plan is for illustrative purposes only and should only be used as such by any prospective purchaser.

