

## Springwood, 14-16 Aerie Court

A Lifestyle Beyond Ordinary: Private Hilltop Estate Wity Resort Vibes and Designer Flair"

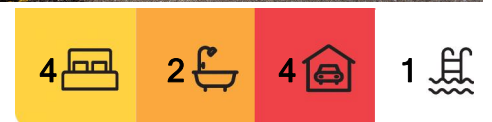
Tucked away in one of Springwood's most exclusive enclaves, this architect-designed estate offers a rare marriage of privacy, prestige, and panoramic beauty. Elevated on a sprawling 4,855m2 parcel, this residence is a masterclass in refined acreage living - where every detail has been curated to deliver a lifestyle of indulgence, serenity, and seamless connection to nature.

Top 5 Features at a Glance:

1. Private 4,855m2 sanctuary with subdivision potential and sweeping views.
2. Architect-designed home with high ceilings, multiple living zones, and a resort-style layout.
3. Resort-style pool, spa, and alfresco entertaining with heat-controlled blinds.
4. Three-car garage plus carport, with side access for boat or caravan.
5. Prestigious location near elite schools, shops, and major transport links.



**Disclaimer:** All information contained therein is gathered from relevant third parties sources. We cannot guarantee or give any warranty about the information provided. Interested parties must rely solely on their own enquiries.



**For Sale**  
Contact Agent

**View**  
Sat 2nd Aug @ 11:30AM - 12:00PM

**Contact**  
**Pragya Ojha**  
0430 103 034  
pragyaojha@ljhpp.com.au

**LJ Hooker Property Partners**  
**07 3344 0288**



## A Home of Distinction and Design

From the moment you enter the private driveway, you're enveloped by a tranquil landscape of native flora and fauna, setting the tone for the serenity that lies within. The home's elevated position offers breathtaking vistas of the city skyline, mountain ranges, and lush valleys, ensuring every glance out the window is a visual delight.

Inside, the residence boasts soaring ceilings and an open-plan design that seamlessly integrates multiple living and entertaining spaces. The central lounge, complete with a built-in wet bar, is perfect for hosting guests, while the formal dining area, accentuated by a curved feature wall, adds a touch of architectural elegance.

Rarely do homes of this calibre and architectural integrity come to market. From the grand entry foyer, to the elongated angles of the feature walls and the striking brick fireplace, this residence is a celebration of both form and function.

Designed by an architect with a deep sensitivity to light, space, and flow, every detail has been thoughtfully composed to honour the landscape, invite natural light, and create a sense of enduring serenity throughout.

## Gourmet Kitchen and Outdoor Entertaining

The heart of the home is its expansive kitchen, featuring three distinct workstations, ample storage, and panoramic views that inspire culinary creativity. Step outside to the alfresco area, where the resort-style pool, wading area, and spa are surrounded by meticulously landscaped gardens, creating an idyllic setting for relaxation and entertainment.

So special is this setting that the owners chose to host their son's wedding in the very gardens that wrap around the home - an unforgettable celebration as the sun set, surrounded by nature's splendour. It's the kind of outdoor space that feels like a five-star resort, designed for life's most cherished moments.

## Luxurious Bedrooms and Bathrooms

The master suite is a true retreat, opening directly to the outdoor spa and featuring a renovated Bali-inspired ensuite. Three additional bedrooms offer ample space and comfort, with another boasting a private ensuite. Each room is designed to maximize natural light and capture the stunning surrounding views.

## Additional Features:

- Ducted heating and reverse cycle air conditioning for year-round comfort.
- Bluetooth-enabled, temperature-controlled ceiling fans and time-controlled lighting systems - both motion-controlled.
- Curtains by Curtain Elegance, adding a touch of sophistication.
- Side access for boats or caravans, plus ample off-street parking.
- Subdivision potential, offering future development opportunities.

## Proximity to Key Amenities:

John Paul College - 7 min drive

Calvary Christian College - 2 min drive

Springwood State High School - 2 min drive

Springwood Central State School - 2 min drive



**LJ Hooker Property Partners**  
**07 3344 0288**

**Disclaimer:** All information contained therein is gathered from relevant third parties sources. We cannot guarantee or give any warranty about the information provided. Interested parties must rely solely on their own enquiries.

St Edwards Catholic Primary School - 6 min drive  
Chatswood Central Shopping Centre - 5 min drive  
Springwood Mall - 4 min drive  
Springwood Bus Station - 4 min drive  
Brisbane CBD - 20 km (approx. 25 min drive)  
Gold Coast - 60 km (approx. 45 min drive)

Your Private Paradise Awaits

This is more than a home - it's a lifestyle. A place where luxury meets nature, where every detail is designed for comfort and elegance. Don't miss this rare opportunity to own a piece of Springwood's most prestigious real estate. Contact Pragya Ojha today to arrange your private viewing.

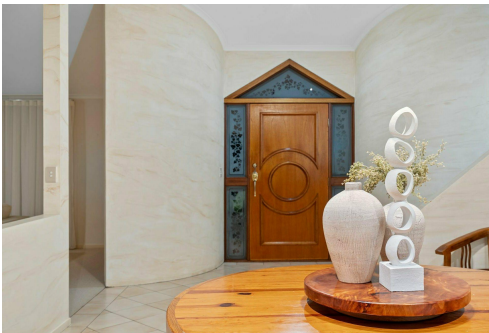
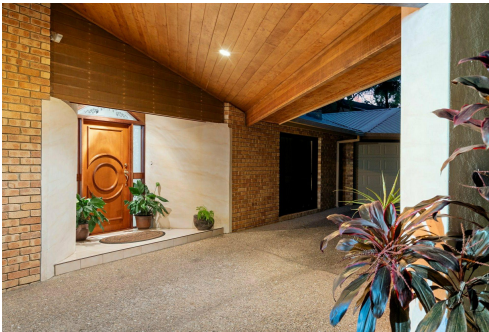
All information contained herein is gathered from sources we consider to be reliable. However, we cannot guarantee or give any warranty about the information provided and interested parties must solely rely on their own enquiries.

More About this Property

Property ID	B359F4R
Property Type	House
Land Area	4855 m2
Including	Air Conditioning Ducted Heating Toilets (3) Pool Spa Courtyard Balcony Deck Dishwasher Outdoor Entertaining Built-in-Robes Secure Parking Remote Garage

Pragya Ojha 0430 103 034  
Agent | [pragyaajha@ljhpa.com.au](mailto:pragyaajha@ljhpa.com.au)

LJ Hooker Property Partners 07 3344 0288  
25 Pinelands Road, SUNNYBANK HILLS QLD 4109  
[propertypartners.ljhooker.com.au](http://propertypartners.ljhooker.com.au) | [sunnybankhills@ljhpa.com.au](mailto:sunnybankhills@ljhpa.com.au)



**Disclaimer:** All information contained therein is gathered from relevant third parties sources. We cannot guarantee or give any warranty about the information provided. Interested parties must rely solely on their own enquiries.

LJ Hooker Property Partners  
07 3344 0288



## LEGEND

- 1 RESIDENCE
- 2 GARAGE
- 3 ALFRESCO
- 4 POOL
- 5 SPA



16 Aerie Court **SPRINGWOOD**

4 | 2 | 2 | 448m<sup>2</sup> | 4855m<sup>2</sup>

**LJ Hooker** Property Partners

All dimensions are approximate; they are subject to errors and inaccuracies and no liability will be accepted. Plans are shown for marketing purposes only.



**LJ Hooker Property Partners**  
07 3344 0288

**Disclaimer:** All information contained therein is gathered from relevant third parties sources. We cannot guarantee or give any warranty about the information provided. Interested parties must rely solely on their own enquiries.