

1 Wyton Court, Springvale South

Spacious Family Living with Exceptional Outdoor Space — 1 Wyton Court, Springvale South

Tucked away in a peaceful and private court setting, 1 Wyton Court, Springvale South presents an outstanding opportunity to secure a spacious and versatile home on a generous, uniquely shaped allotment. Offering multiple living zones, excellent outdoor entertaining space and a family-friendly layout, this property is perfectly suited to first home buyers, growing families, downsizers seeking space without compromise, and astute investors alike.

From the moment you arrive, the home's quiet court position provides a sense of privacy and security. The wide driveway leads to a substantial double garage, offering ample off-street parking and practicality for families with multiple vehicles.

Inside, the thoughtfully designed floor plan ensures comfortable everyday living. A welcoming entry flows through to a large formal living and dining area, providing an ideal space for entertaining guests or enjoying relaxed evenings at home. The separate family room offers additional flexibility — perfect as a children's retreat, media room or second lounge.

3  2  2 

AUCTION

Sat 18th Apr @ 3:00PM

VIEW

By Appointment

AGENTS

Quinnie Hua
0401 661 742
quinnie.hua@ljhooker.com.au

Sean Soshiance
0452 596 987
sean.soshiance@ljhooker.com.au

AGENCY

LJ Hooker Dandenong City | Berwick
(03) 9877 9750

All information contained therein is gathered from relevant third parties sources. We cannot guarantee or give any warranty about the information provided. Interested parties must rely solely on their own enquiries.

 **LJ Hooker**

The well-appointed kitchen sits at the heart of the home, complete with generous bench space, ample cabinetry and convenient access to the dining area. Whether you're preparing daily meals or hosting gatherings, the layout ensures both functionality and connection with the rest of the home.

Accommodation comprises three well-proportioned bedrooms, including a spacious master bedroom featuring its own private ensuite and built-in robes. The remaining bedrooms are serviced by a central bathroom with a separate WC, ideal for busy households. A full laundry with external access further enhances the home's practicality.

Step outside and you'll find one of the property's standout features — a substantial decking area, perfect for entertaining family and friends all year round. The expansive backyard provides plenty of space for children to play, pets to roam, or even future enhancements such as landscaping, a garden oasis or additional outdoor features. Additional sheds at the rear offer valuable storage or workspace options for tradies and hobbyists.

Location is a true highlight. Positioned within easy reach of both Springvale Shopping Centre and Springvale South Shopping Centre, you'll enjoy convenient access to supermarkets, fresh food markets, specialty stores, cafes and essential services. Local schools, parks, public transport options and major arterial roads are all nearby, ensuring effortless connectivity to surrounding suburbs and the CBD.

Offering space, flexibility and a highly convenient location, 1 Wyton Court is a property that caters to all stages of life. Whether you're looking to move straight in, update to add value, or secure a smart investment in a sought-after pocket of Springvale South, this home delivers exceptional potential.

An opportunity not to be missed —inspect today and experience the lifestyle on offer.

DISCLAIMERS: Every reasonable effort has been made to ensure the accuracy of the information provided; however, neither the vendor, agent, nor agency makes any representation or warranty as to its completeness or correctness. The floor plans provided are for illustrative purposes only and should be treated as such. No liability is accepted for any inaccuracies or omissions in the details or dimensions represented. As the property may be subject to private inspections, the sale status could change prior to scheduled Open Homes. Prospective buyers are advised to verify the current availability of the property before attending any inspection.

MORE DETAILS

Property ID	9PQHWR
Property Type	House
Land Area	563 m2

Quinnie Hua 0401 661 742

Sales specialist | quinnie.hua@ljhooker.com.au

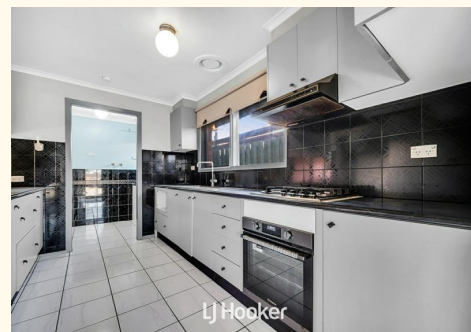
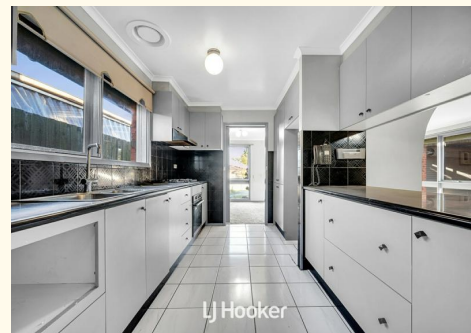
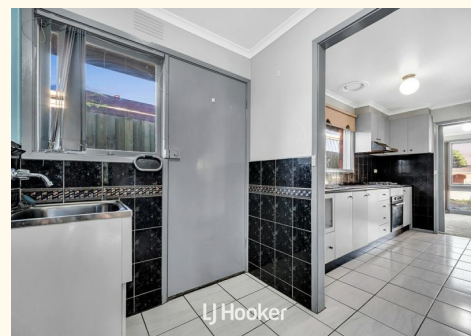
Sean Soshiance 0452 596 987

Sales Specialist | sean.soshiance@ljhooker.com.au

LJ Hooker Dandenong City | Berwick (03) 9877 9750

347 Lonsdale Street, DANDENONG VIC 3175

dandenong.ljhooker.com.au | dandenong@ljhooker.com.au



Floor Plan



LJ Hooker

1 Wyton Court, Springvale South

* Dimensions are approximate and for illustrative purposes only

All information contained therein is gathered from relevant third parties sources. We cannot guarantee or give any warranty about the information provided. Interested parties must rely solely on their own enquiries.

