

2156 Springbrook Road, Springbrook

5 3 0

Timeless Craftsmanship Meets Natural Beauty: An Iconic 23-Acre Estate Overlooking Numinbah Valley

Step into a world where history, nature, and artistry harmoniously converge. This breathtaking 23-acre property is a sanctuary of peace, privacy, and possibility. Nestled in the lush hinterland with sweeping views toward the Numinbah Valley and the distant shimmer of the Gold Coast, the estate offers three distinct dwellings, a natural dam, fruit-laden orchard, and approved plans for future development - making it a rare, legacy-worthy opportunity.

Main Residence —Hand-Built Stone Masterpiece:

This truly unique 2-bedroom, 1-bathroom home is a celebration of craftsmanship and history, constructed from sandstone blocks sourced from under Brisbane's iconic Story Bridge. Built by a skilled stone mason who worked on St. John's Cathedral, every inch of this home tells a story.

Dome-inspired architecture anchored by 13 truckloads of concrete and steel reinforcements that secure the structure through the

FOR SALE
Offers over \$3,800,000

VIEW
By Appointment

AGENTS
Roelien Powell
0420 664 690
roelien@ljhgcp.com.au

AGENCY
LJ Hooker Mudgeeraba
07 5530 6000

All information contained therein is gathered from relevant third parties sources.
We cannot guarantee or give any warranty about the information provided.
Interested parties must rely solely on their own enquiries.

LJ Hooker

sandstone and into the foundation.

Soaring curved laminated timber beams support a large central dome.

Finishes include:

- Polished marble accents
- Natural slate flooring
- A rare Argentine granite kitchen benchtop, sourced from a creek bed, grounding the space in natural luxury
- Warm timber floorboards throughout
- Every window frames a picture-perfect view of the surrounding landscape - from rolling hills to sunrise skies.
- This is more than a home; it's a piece of living art.

Tucker Cottage —A Home with Artistic Legacy:

Set apart from the main home, with its own driveway, is a charming 3-bedroom cottage known locally as Tucker Cottage, once owned by renowned Australian artist Albert Tucker.

- A classic country home infused with creative spirit
- Currently tenanted, offering passive income potential or an ideal guesthouse, retreat, or studio
- Comfortable, light-filled interiors with character and charm

The Artist's Studio —Light, Space, and Inspiration:

Purpose-built for creative pursuits, the studio is a bright, airy space that opens onto serene views of the orchard and tranquil dam.

- Expansive open-plan layout, ideal for painting, sculpting, design, or conversion into a stylish living space
- Includes a private office, kitchenette, bathroom/laundry
- A kiln space behind the office
- A carport
- " Fully self-contained with its own water tank and septic system
- " Immersed in light and surrounded by nature —a perfect retreat for the working artist or creative soul

The Land —23 Acres of Magic:

- Lush, undulating countryside with views stretching to the coast
- A dam surrounded by rare fruit trees
- A fully established house pad sits ready on the far side of the dam, offering potential for a future home or guest accommodation
- The property boundary is home to Horse Shoe Falls, a natural waterfall adding to the land's charm and rarity which falls 302 feet to the valley below
- " Formerly approved for 7 eco-style cabins —ideal for retreat or wellness development (STCA)
- An Irreplaceable Lifestyle

This is not just a property —it's a legacy. Whether you're an artist, visionary, nature-lover, or investor seeking a project with soul, this estate offers a rare canvas upon which to build your future. With its deep historical roots, stunning natural setting, and potential for expansion, this is a once-in-a-generation opportunity.

MORE DETAILS

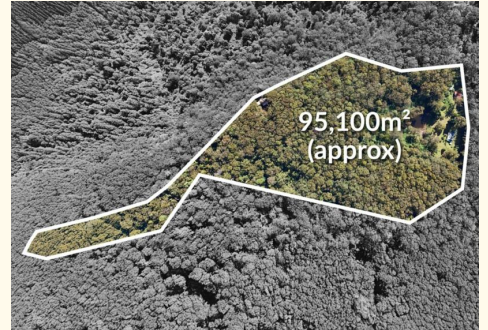
Property ID 7FJ15
Property Type AcreageSemi-rural
Land Area 94940 m2

Roelien Powell 0420 664 690

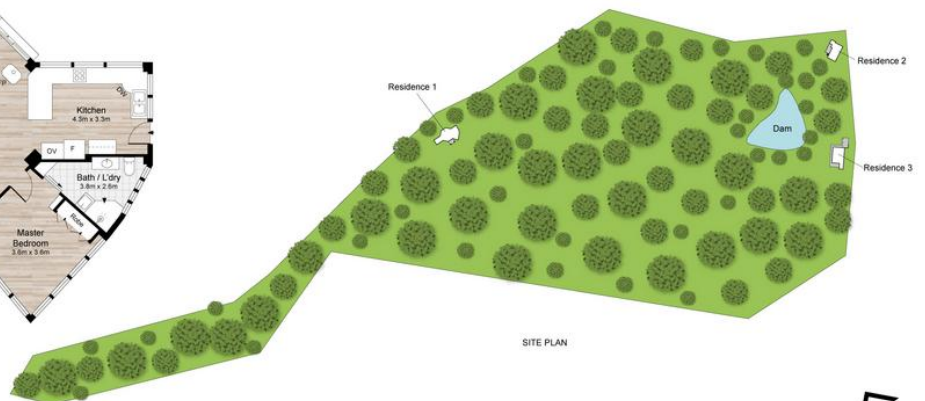
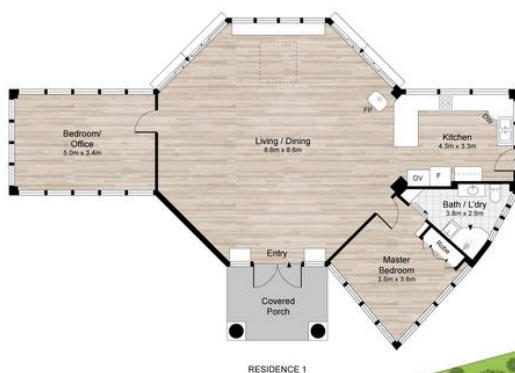
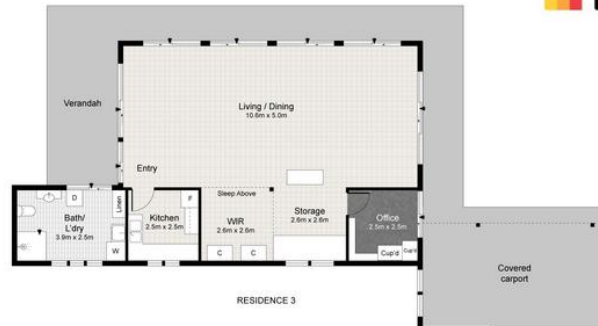
Principal Licensee / Sales Specialist | roelien@ljhgcp.com.au

LJ Hooker Mudgeeraba 07 5530 6000

1/58 Railway Street, MUDGEERABA QLD 4213
mudgeeraba.ljhooker.com.au | mudgeeraba@ljhgcp.com.au



All information contained therein is gathered from relevant third parties sources.
We cannot guarantee or give any warranty about the information provided.
Interested parties must rely solely on their own enquiries.



2156 SPRINGBROOK ROAD, SPRINGBROOK

6 3 3

Internal: 282m² | External: 100m² | Total: 382m²

Scale in meters. Indicative only. Dimensions are approximate.
All information contained herein is gathered from sources we believe to be reliable.
However, we cannot guarantee its accuracy and interested persons should rely on their own enquiries.