



## Southport, 8/6 Lenneberg Street

### 2-Bedroom Apartment in Prime Location

Perfectly positioned in the heart of Southport, this stylish 2-bedroom apartment offers comfort, convenience, and lifestyle all in one. Located just moments from local cafes, shops, transport, and the Broadwater, this is an ideal opportunity for first-home buyers, downsizers, or investors.

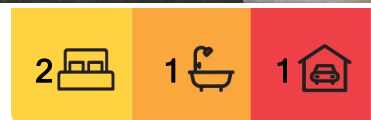
Step inside to discover open-plan living that flows seamlessly from the kitchen through to the light-filled lounge area. The property features two well-sized bedrooms, a central bathroom with bath and separate shower, and a single lock-up garage for secure parking.

Enjoy warm summer days with access to the complex's sparkling swimming pool-perfect for relaxing or entertaining friends.

This is easy, low-maintenance living in one of the Gold Coast's most convenient suburbs. Don't miss out on securing a property that blends lifestyle and location.



**Disclaimer:** All information contained therein is gathered from relevant third parties sources. We cannot guarantee or give any warranty about the information provided. Interested parties must rely solely on their own enquiries.



**For Sale**  
Offers over \$570,000

**View**  
By Appointment

**Contact**  
**Roelien Powell**  
0420 664 690  
roelien@ljhgcp.com.au

**Craig Smith**  
0456 819 627  
craig@ljhgcp.com.au

**LJ Hooker Mudgeeraba**  
07 5530 6000

Key Features:

- 2 generous bedrooms
  - 1 well-appointed bathroom
  - Open-plan living
  - Single lock-up garage
  - Access to complex swimming pool
  - Close to public transport, shops, cafes, and the Broadwater
- Currently tenanted until 1st of July

## More About this Property

<b>Property ID</b>	15J15
<b>Property Type</b>	Unit
<b>House Size</b>	63 m2
<b>Land Area</b>	302 m2
<b>Including</b>	Toilets (1) Intercom Built-in-Robes

**Roelien Powell 0420 664 690**

Principal Licensee / Sales Specialist | [roelien@ljhgcp.com.au](mailto:roelien@ljhgcp.com.au)

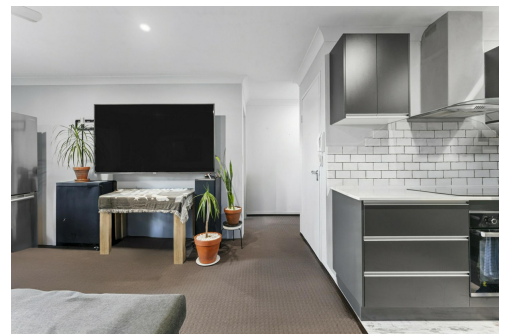
**Craig Smith 0456 819 627**

Sales Specialist | [craig@ljhgcp.com.au](mailto:craig@ljhgcp.com.au)

**LJ Hooker Mudgeeraba 07 5530 6000**

1/58 Railway Street, MUDGEERABA QLD 4213

[mudgeeraba.ljhooker.com.au](http://mudgeeraba.ljhooker.com.au) | [mudgeeraba@ljhgcp.com.au](mailto:mudgeeraba@ljhgcp.com.au)



**Disclaimer:** All information contained therein is gathered from relevant third parties sources. We cannot guarantee or give any warranty about the information provided. Interested parties must rely solely on their own enquiries.

**LJ Hooker Mudgeeraba**  
**07 5530 6000**



8/6 LENNEBERG STREET, SOUTHPORT



 2
  1
  2  
 Internal: 57m<sup>2</sup> | External: 5m<sup>2</sup> | Total: 62m<sup>2</sup>

Scale in meters. Indicative only. Dimensions are approximate.  
 All information contained herein is gathered from sources we believe to be reliable.  
 However, we cannot guarantee its accuracy and interested persons should rely on their own enquiries.