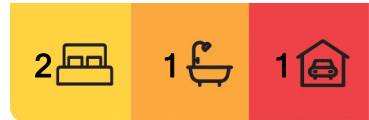




## Southport, 6/29 White Street

### SOUTHPORT CBD INVESTMENT OPPORTUNITY.



**For Sale**  
Offers Over \$510,000

**View**  
By Appointment

**Contact**  
**Michael Levonis**  
0414 323 997  
mlevonis.southport@ljhooker.com.au

- \*Position, Position , Position.
- \*Located in the heart of Southport.
- \*Only five minutes' walk to the centre of town, Australia Fair Shopping Complex and restaurant precinct, Nerang Street Mall, The Broadwater parklands and swim beach, The Aquatic Centre, pubs, clubs, movie theatre, and the light rail.
- \*Ten minutes' drive to Griffith University and the Gold Coast Hospital
- \*Fully renovated two bedroom third level unit
- \*Combined bathroom and laundry, separate toilet.
- \*One car park under the building
- \*Ideal investment will rent for
- \*Very low body corporate fees at
- \*Inspections by appointment.
- \* Virtual furniture has been used in this image for illustrative purposes. The property is not furnished.



**LJ Hooker Southport**  
**(07) 5591 5222**

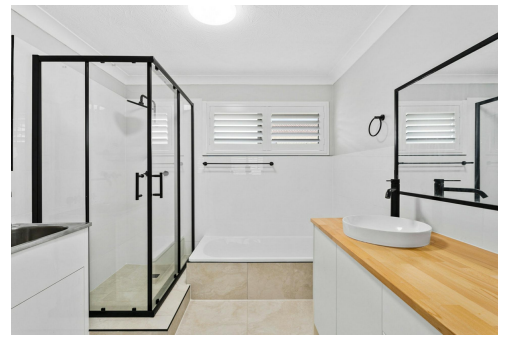
**Disclaimer:** All information contained therein is gathered from relevant third parties sources. We cannot guarantee or give any warranty about the information provided. Interested parties must rely solely on their own enquiries.

## More About this Property

<b>Property ID</b>	103VF4K
<b>Property Type</b>	Unit
<b>Including</b>	Air Conditioning Balcony Built-in-Robes Secure Parking

**Michael Levonis 0414 323 997**  
Salesperson | [mlevonis.southport@ljhooker.com.au](mailto:mlevonis.southport@ljhooker.com.au)

**LJ Hooker Southport (07) 5591 5222**  
2308-2309 Level 3 Southport Central, Tower 2, 5 Lawson Street, SOUTHPORT  
QLD 4215  
[southport.ljhooker.com.au](http://southport.ljhooker.com.au) | [southport@ljhooker.com.au](mailto:southport@ljhooker.com.au)



**LJ Hooker Southport**  
**(07) 5591 5222**

**Disclaimer:** All information contained therein is gathered from relevant third parties sources. We cannot guarantee or give any warranty about the information provided. Interested parties must rely solely on their own enquiries.



6/29 WHITE STREET, SOUTHPORT



Internal: 72m<sup>2</sup> | External: 3m<sup>2</sup> | Carspace: 18m<sup>2</sup> | Total: 93m<sup>2</sup>

Whilst every attempt has been made to ensure the accuracy of the floor plan contained here, measurements of doors, windows, rooms and any other item are approximate and no responsibility is taken for any error, omission, or misstatement. This plan is for illustrative purposes only and should only be used as such by any prospective purchaser.

