

Southport, 7 Graham Street

Rare Investment Gem —Walk to CBD, Schools & Beaches

Situated on a generous 506m² block, this property presents a rare and exciting opportunity for developers or investors looking to capitalise on the potential for a duplex or other redevelopment (STCA). Nestled in the heart of Southport, this site combines location, lifestyle, and future growth prospects in one tidy package.

Currently on the block is a charming 2-bedroom, 1-bathroom stilt home, offering a comfortable layout with a master bedroom that opens onto a private balcony. The under-house area provides ample space for parking or storage, making it a practical choice for both residents and future builders.

Located just a short drive to Main Beach, Surfers Paradise, Broadwater Parklands, and The Spit, this home offers unbeatable lifestyle access to some of the Gold Coast's most iconic destinations.



Disclaimer: All information contained therein is gathered from relevant third parties sources. We cannot guarantee or give any warranty about the information provided. Interested parties must rely solely on their own enquiries.

SOLD



For Sale
Offers Over \$979,000

View
ljhooker.com.au/5GTDF41

Contact
Maxwell Hooper
0401 373 369
mhooper@ljhgc.com.au

LJ Hooker Nerang
(07) 5581 4422

Key Features:

- 506m² block in prime Southport location
- Ideal for duplex or redevelopment (STCA)
- 2-bedroom stilt home with master balcony
- Ample under-house parking and storage

Unmatched Central Convenience:

- Walking distance to Southport CBD, Queen Street Village & Ferry Road Markets
- Close to elite schools including St Hilda's and TSS
- Minutes to Griffith University, Gold Coast University Hospital & Broadwater Parklands
- Easy access to bus and G.link tram services for seamless commuting

Additional Information:

- Annual council rates: approx. \$2,500
- Rental Appraisal \$670.00 - \$700.00

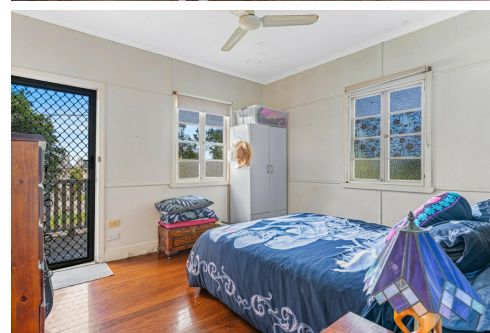
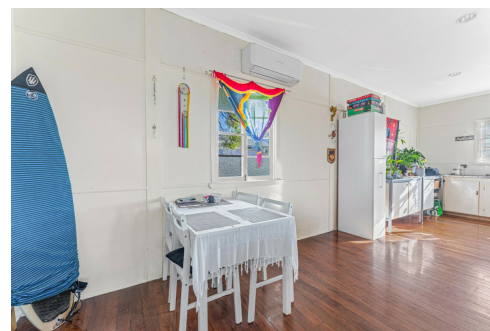
Don't miss this outstanding opportunity in one of Southport's most promising pockets.

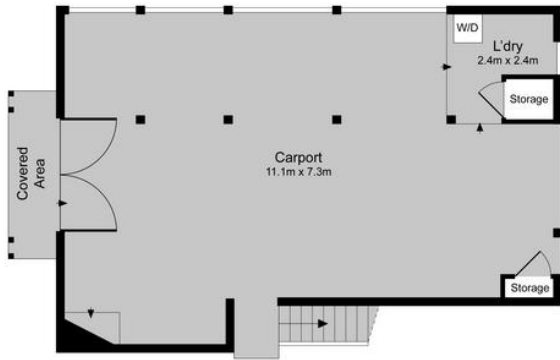
More About this Property

Property ID	5GTDF41
Property Type	House
Land Area	506 m2
Including	Air Conditioning Balcony Fully Fenced

Maxwell Hooper 0401 373 369
Sales Specialist | mhooper@ljhgc.com.au

LJ Hooker Nerang (07) 5581 4422
2-4 New Street, NERANG QLD 4211
nerang.ljhooker.com.au | nerang@ljhgc.com.au





GROUND FLOOR



FIRST FLOOR



SITE PLAN



7 GRAHAM STREET SOUTHPORT

2
 1
 2
 Internal: 74m² | External: 87m² | Total: 161m²

Scale in meters. Indicative only. Dimensions are approximate.
 All information contained herein is gathered from sources we believe to be reliable.
 However, we cannot guarantee its accuracy and interested persons should rely on their own enquiries.