



Southport, 38/128 Benowa Road

OUTSTANDING VALUE ... SPACIOUS TWO BEDROOM, ONE-LEVEL VILLA ... PERFECT FIRST HOME OR INVESTMENT PROPERTY !!!

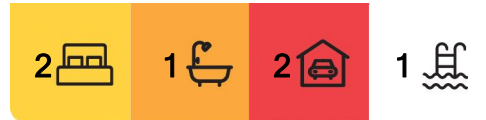
MOTIVATED VENDORS ARE READY TO SELL !!! Nestled in the central & convenient "Sun Village" estate with resort-style pool, tennis court & BBQ facilities, this spacious single-level duplex/villa is great value for money for any first-home buyer or investor looking to get into the market ... why pay rent, when you could be paying off your own mortgage on a place to make your very own !!!

* Fantastic location, centrally nestled on the borders of Southport, Benowa, Ashmore & Bundall ... close to schools, public transport, local shopping centres, medical facilities, TAFE college, Griffith University etc etc

* Quiet, safe, well-managed complex

* Large, open-plan lounge/dining area

* Kitchen looks onto rear courtyard



For Sale
\$649,000

View
ljhooker.com.au/H5J0F

Contact
Darrell Johnson
0403 803 704
djohnson@ljhooker.com.au
Julian Kannis
041 363 5551
julian.kannis@ljhooker.com.au

LJ Hooker Ashmore
(07) 5526 9722

Disclaimer: All information contained therein is gathered from relevant third parties sources. We cannot guarantee or give any warranty about the information provided. Interested parties must rely solely on their own enquiries.

- * Large covered outdoor entertaining area and peaceful yard/garden complete with citrus trees
- * Large Master bedroom with mirrored robes
- * Spacious 2nd bedroom looks to tranquil rear yard
- * Generous bathroom/laundry combined ... separate toilet
- * Single lockup garage plus additional courtyard parking also
- * Located within easy access to all the amazing facilities that are on offer including resort - style pool, full size tennis court and BBQ areas for entertaining your guests
- * Low Body Corp fees of only \$66 per week ... very good value considering all that is on offer in this well-managed and looked-after estate
- * Pet friendly complex
- * Walk to public transport, TAFE, numerous schools and shops
- * Close to Surfers Paradise, Griffith Uni, hospitals and the world's best beaches

Perfect for the first-home buyer, down-sizer or investor alike in the very central & convenient, well managed "Sun Village" estate in the heart of the Gold Coast ... call your Southport area specialist Darrell Johnson on 0403 803704 to view this property anytime by appointment, or we look forward to seeing you at one of our scheduled open homes.

Looking to live or invest in property/real estate in Southport? Southport is one of the most practical and central suburb the Gold Coast has to offer it is frequently high-lighted on major property reports as a recommended investment "Hot Spot" assured of ongoing demand and outstanding capital growth with real estate in the area very much in demand. With its central location, Southport has numerous parks, schools, shopping centres, sporting & medical facilities all at your finger-tips, whilst offering easy access and only minutes away via main arterial roads to beaches, the Broadwater & parklands, cafes, restaurants, several CBD's and the M1 giving access to Brisbane & Coolangatta airports. Southport CBD, China Town, the light rail system, Griffith University, Gold Coast Hospital, Pindara Private hospital and other medical precincts are all only minutes away.

More About this Property

Property ID	H5J0F
Property Type	House
Including	Toilets (1) Pool Tennis Court Courtyard Outdoor Entertaining Built-in-Robes Fully Fenced Close to Schools Close to Shops Close to Transport Pool

Darrell Johnson 0403 803 704
Sales Professional | djohnson@ljhooker.com.au
Julian Kannis 041 363 5551
Sales Professional | julian.kannis@ljhooker.com.au

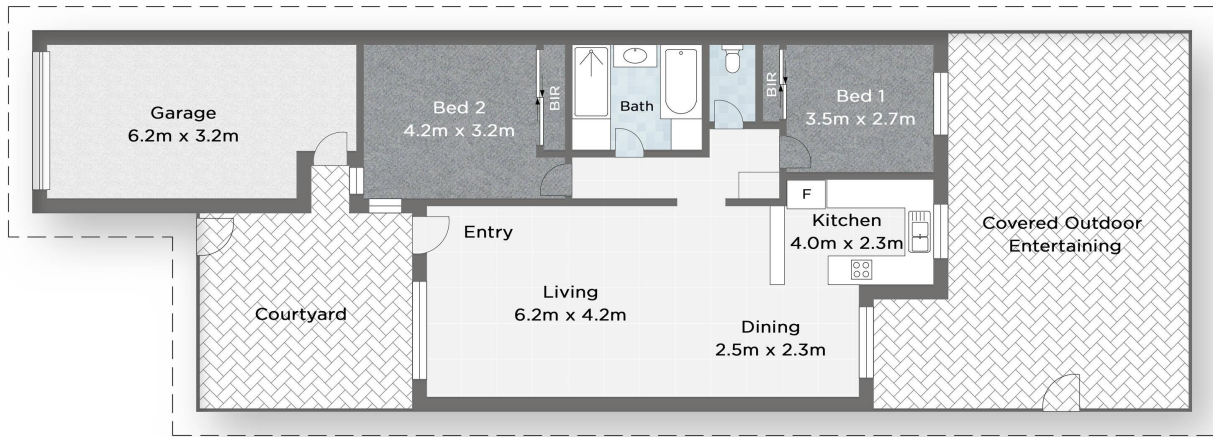
LJ Hooker Ashmore (07) 5526 9722
167 Cotlew Street, ASHMORE QLD 4214
ashmore.ljhooker.com.au | admin.ashmore@ljhooker.com.au





Disclaimer: All information contained therein is gathered from relevant third parties sources. We cannot guarantee or give any warranty about the information provided. Interested parties must rely solely on their own enquiries.




LJ Hooker Ashmore
(07) 5526 9722



38/128 BENOWA RD SOUTHPORT

 Bed 2
  Bath 1
  Car 2

Darrell Johnson 0403 803 704 

Measurements are approximate only and no responsibility is taken for any error, omission, or mis-statement. This is for illustrative purposes only and should be used as such by any prospective purchaser. www.visualmotion.com.au



LJ Hooker Ashmore
(07) 5526 9722

Disclaimer: All information contained therein is gathered from relevant third parties sources. We cannot guarantee or give any warranty about the information provided. Interested parties must rely solely on their own enquiries.