

## Southport, 14/10 Hosea Street

PRIVATE, SAFE & SECURE ... LOW MAINTENANCE, EASY-LIVING, ONE-LEVEL HOME ... PRIME, CENTRAL & CONVENIENT LOCATION !!!

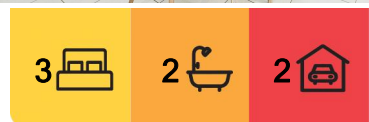
THE PERFECT INVESTMENT PROPERTY (Currently tenanted to 2nd July 2025 at \$800 per week ) ... Nestled in a quiet cul-de-sac with tranquil parkland adjacent, this easy-living one-level home is filled with natural light and an absolute pleasure to present ... move straight in and enjoy your new home with nothing further to do except relax and enjoy living here with its prime, central location so close to everything that you could either want or need !!!

Key features include ...

- \* Prime, central & convenient, highly sought-after location
- \* Nice elevated position to capture the breezes and peaceful outlook, with tranquil parkland adjacent
- \* Free-standing home with no adjoining neighbours ... nestled in the quiet and highly-



**Disclaimer:** All information contained therein is gathered from relevant third parties sources. We cannot guarantee or give any warranty about the information provided. Interested parties must rely solely on their own enquiries.



**For Sale**  
Fantastic Value at \$849,000

**View**  
[ljhooker.com.au/GMJ0F](https://ljhooker.com.au/GMJ0F)

**Contact**  
**Darrell Johnson**  
0403 803 704  
[djohnson@ljhooker.com.au](mailto:djohnson@ljhooker.com.au)  
**Julian Kannis**  
041 363 5551  
[julian.kannis@ljhooker.com.au](mailto:julian.kannis@ljhooker.com.au)

**LJ Hooker Ashmore**  
**(07) 5526 9722**

sought "Parkridge Estate" of only 18 residences

- \* Inviting lounge area with bay windows looking to entrance courtyard and gardens
- \* Lovely, bright kitchen with an abundance of storage & bench-space ... dining area adjacent
- \* The 2nd living space flows easily to outdoors
- \* Private al-fresco deck makes the perfect place for your evening meals or relaxing breakfasts with your morning cuppa & paper
- \* The large Master retreat offers a generous walk-in robe and ensuite
- \* Two additional large bedrooms
- \* Spacious 2nd bathroom with separate toilet
- \* Big laundry opens to outdoor drying area
- \* Over-sized remote double garage offers internal access to the house and has plenty of room for storage/work-bench, with extra door access to rear yard
- \* Security screens throughout
- \* Air-con and ceiling fans
- \* Low body corp fees of approx \$68 per week in this well-maintained and very much-loved small enclave of free-standing residences
- \* Situated at the end of a cul-de-sac, in a nice central position so close to shops, schools, hospitals & medical facilities, and you can even walk to Surfers Paradise if you like !!!
- \* Currently tenanted to 2nd July 2025 at \$800 per week

Call your local Southport area specialist Darrell Johnson on 0403 803 704 for further information or to view this fantastic-value property anytime by appointment.

Southport is one of the most highly-sought, centrally located precincts on the Gold Coast, and is very popular for both owner/occupiers and investors alike ... Hosea Street is a real hidden surprise only minutes to TSS, Southport CBD, China Town, Chevron Island, Home of the Arts (HOTA), the Broadwater and the world's best beaches. This central & convenient location also allows for easy access to all major shopping centres, the M1, public transport and all required amenities.

**Disclaimer:** Whilst every effort has been made to ensure the accuracy of these particulars, no warranty is given by the vendor or the agent as to their accuracy. Interested parties should not rely on these particulars as representations of fact but must instead satisfy themselves by inspection or otherwise



**LJ Hooker Ashmore**  
**(07) 5526 9722**

**Disclaimer:** All information contained therein is gathered from relevant third parties sources. We cannot guarantee or give any warranty about the information provided. Interested parties must rely solely on their own enquiries.

## More About this Property

<b>Property ID</b>	GMJ0F
<b>Property Type</b>	House
<b>Land Area</b>	350 m2
<b>Including</b>	Ensuite Air Conditioning Toilets (2) Courtyard Deck Dishwasher Outdoor Entertaining Built-in-Robes Secure Parking Fully Fenced Remote Garage Close to Schools Close to Shops Close to Transport

**Darrell Johnson 0403 803 704**

Sales Professional | [djohnson@ljhooker.com.au](mailto:djohnson@ljhooker.com.au)

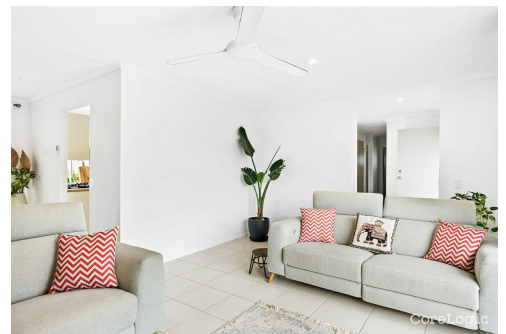
**Julian Kannis 041 363 5551**

Sales Professional | [julian.kannis@ljhooker.com.au](mailto:julian.kannis@ljhooker.com.au)

**LJ Hooker Ashmore (07) 5526 9722**

167 Cotlew Street, ASHMORE QLD 4214

[ashmore.ljhooker.com.au](http://ashmore.ljhooker.com.au) | [admin.ashmore@ljhooker.com.au](mailto:admin.ashmore@ljhooker.com.au)



**LJ Hooker Ashmore**  
**(07) 5526 9722**

**Disclaimer:** All information contained therein is gathered from relevant third parties sources. We cannot guarantee or give any warranty about the information provided. Interested parties must rely solely on their own enquiries.