



13 Barton Avenue, Southport

SOLD! Chirn Park Character with Space, Style & Lifestyle Appeal

Welcome to 13 Barton Avenue, Southport, a beautifully reimagined character home set in the heart of tightly held Chirn Park, one of the Gold Coast's most loved lifestyle precincts.

Blending timeless charm with contemporary comfort, this expansive single-level residence offers an exceptional layout rarely found in character homes. Polished timber floors, high ceilings and light-filled interiors create warmth and elegance throughout, while modern upgrades ensure effortless everyday living.

The thoughtfully designed floorplan delivers four generous bedrooms and three bathrooms, including a private guest suite with ensuite, ideal for extended family, visitors, teenagers or even a home office setup. The primary bedroom features a walk-in robe and ensuite, positioned for privacy and comfort.

At the centre of the home, the open-plan living and dining area flows seamlessly into the kitchen, complete with a large island bench and excellent storage. This space connects effortlessly to the covered alfresco zone, creating the perfect indoor—outdoor lifestyle so sought after in Chirn Park.

All information contained therein is gathered from relevant third parties sources. We cannot guarantee or give any warranty about the information provided. Interested parties must rely solely on their own enquiries.

4 3 2

FOR SALE

Contact Ben

AGENTS

Ben Latimer

0402 921 314

blatimer.southport@ljhooker.com.au

Alex McCormack

0411 510 099

amccormack.southport@ljhooker.com.au

AGENCY

LJ Hooker Southport

(07) 5591 5222



Step outside to a private, landscaped backyard with swimming pool, ideal for entertaining, relaxing or enjoying family time year-round.

Key features include:

- Prestigious Chirn Park location with strong community vibe
- Character fae with beautifully updated interiors
- Four bedrooms, three bathrooms including guest suite with ensuite
- Primary bedroom with walk-in robe and ensuite
- Open-plan living and dining with excellent natural light
- Stylish kitchen with island bench and quality appliances
- Covered alfresco entertaining area overlooking the pool
- Separate deck and multiple outdoor zones
- Secure double carport plus additional boat/trailer parking
- Split system air conditioning throughout
- Solar power system
- Shed and excellent storage throughout

Approx. 198m² total area (159m² internal + 39m² external)*

Rates \$1250.28 6 monthly

Water \$728.90 per quarter

Enjoy being just a short stroll to Chirn Park cafés, restaurants, parks and local shops, with easy access to the Broadwater, Gold Coast Health Precinct, Griffith University and transport links.

This is a rare opportunity to secure a substantial, character-filled home in one of Southport's most desirable streets-where lifestyle, charm and location combine.

Inspect with confidence-homes of this calibre in Chirn Park are seldom available.

- Approximate areas as per floor plan.*

Contact Ben Latimer: 0402 921 314

Disclaimer: We have in preparing this information used our best endeavours to ensure that the information contained herein is true and accurate. Prospective buyers should make their own enquiries to satisfy themselves as to its accuracy. Although high standards have been used in the preparation of this document, no legal responsibility can be accepted by LJ Hooker Southport or any loss or damage resulting from the content or the use of this information. Any photographs show only certain parts of the property as it appeared at the time they were taken. Areas, amounts, measurements, distances, and all other numerical information is approximate only.

MORE DETAILS

Property ID 10DZF4K
Property Type House
Land Area 506 m2
Including Air Conditioning
Toilets (3)
Balcony
Deck
Dishwasher
Outdoor Entertaining
Floorboards
Built-in-Robes
Fully Fenced
Solar Panels

Ben Latimer 0402 921 314

Director/Sales Consultant | blatimer.southport@ljhooker.com.au

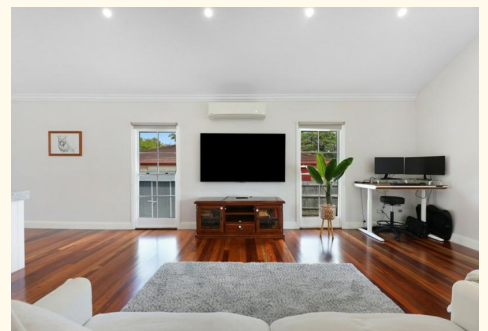
Alex McCormack 0411 510 099

Principal/Licensee | amccormack.southport@ljhooker.com.au

LJ Hooker Southport (07) 5591 5222

2308-2309 Level 3 Southport Central, Tower 2, 5 Lawson Street,
SOUTHPORT QLD 4215

southport.ljhooker.com.au | southport@ljhooker.com.au





13 BARTON AVENUE, SOUTHPORT

4 Bed
 3 Bath
 2 Car

Internal 159m² | External 39m² | Total 198m²

This floor plan is for marketing purposes only. Dimensions and layout are approximate. Mountfort Media gives no guarantee or warranty over the accuracy of this plan.

All information contained therein is gathered from relevant third parties sources. We cannot guarantee or give any warranty about the information provided. Interested parties must rely solely on their own enquiries.