



705/20 Bauer Street, Southport

2 2 1

Coastal Elegance Meets Inner-City Calm

Introducing Eden Garden Residences, a brand-new, residential-only boutique building currently under construction in Southport, with completion scheduled for 2026. This exclusive collection of thoughtfully designed apartments redefines modern coastal living, offering residents a serene retreat in the heart of the city.

Step inside this elegant 2-bedroom + MPR apartment, where natural textures and warm tones create an inviting atmosphere from the moment you arrive. Timber flooring and plush carpets flow through expansive, light-filled spaces, while double-glazed windows frame breathtaking city views, connecting you with the vibrant surroundings. The open-plan living and dining area is perfect for entertaining or relaxing, while the versatile multi-purpose room provides flexibility as a home office, guest space, or reading nook tailored to your lifestyle. At the heart of the home, the kitchen combines style and practicality, featuring stone benchtops, bespoke joinery, and premium appliances—ideal for every level of culinary ambition.

The master bedroom is designed for ultimate relaxation, with generous built-in robes, luxurious finishes, and soft natural light. Bathrooms offer a spa-like experience with brushed gold fixtures, floor-to-ceiling tiles, and elegant stone detailing, ensuring comfort and sophistication in every corner.

FOR SALE
\$1,205,000

AGENTS

Dean Muldoon
0401 070 792
dean.muldoon@ljhooker.com.au

AGENCY

LJ Hooker Broadbeach
(07) 5531 6688

All information contained therein is gathered from relevant third parties sources.
We cannot guarantee or give any warranty about the information provided.
Interested parties must rely solely on their own enquiries.



Residents of Eden Garden Residences enjoy premium amenities including a fully equipped gym, outdoor yoga retreat, and beautifully landscaped areas. Expansive private balconies, integrated home office spaces, and secure basement parking further enhance daily convenience and lifestyle.

Cap off the day on Eden's rooftop terrace, featuring panoramic 270-degree views across the Broadwater, Gold Coast skyline, and hinterland. Whether entertaining guests or enjoying a quiet moment, this stunning rooftop embodies the essence of Eden: elevated, effortless, and entirely yours.

Disclaimer:

Important Notice: We have in preparing this information used our best endeavours to ensure that the information contained herein is true and accurate. Prospective buyers should make their own enquiries to satisfy themselves as to its accuracy. Although high standards have been used in the preparation of this document, no legal responsibility can be accepted by LJ Hooker Broadbeach or any loss or damage resulting from the content or the use of this information. Any photographs show only certain parts of the property as it appeared at the time they were taken. Areas, amounts, measurements, distances and all other numerical information is approximate only.

MORE DETAILS

Property ID	PAAHHD
Property Type	Apartment
House Size	103 m2
Including	Study

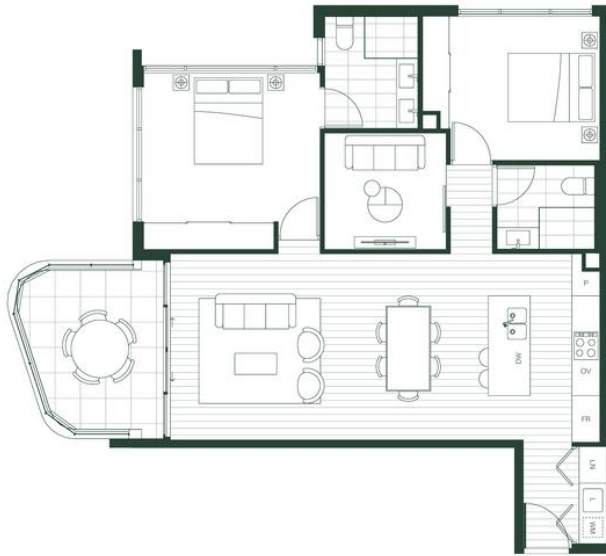
Dean Muldoon 0401 070 792

Director | dean.muldoon@ljhooker.com.au

LJ Hooker Broadbeach (07) 5531 6688

Shop 14, 90-104 Surf Parade, BROADBEACH QLD 4218
broadbeach.ljhooker.com.au | sales.broadbeach@ljhooker.com.au





EDEN
GARDEN RESIDENCES

LEVELS 2 & 1001
E

2 BED - 1001 - 2 BATH - 1 CAR

Interior	92m ²
Balcony	7m ²
Total Area	105m ²



DW	Dishwasher	FR	Fridge (full height)	L	Laundry Sink	WM	Washing Machine
LN	Linens/Storage	OV	Oven	P	Pantry	D	Tumble Dryer

DISCLAIMER
These drawings are conceptual design drawings only. The information contained herein is subject to design development and for the use of independent planning, structural services and other technical consultants.

All information contained therein is gathered from relevant third parties sources.
We cannot guarantee or give any warranty about the information provided.
Interested parties must rely solely on their own enquiries.

