

## Southport, 201/26 Spendelove Avenue

Walk To It All

Perfect for the busy professionals who value low maintenance living, this 2nd floor unit is situated in the Spendelove Residence with easy access to the Southport CBD, Queen Street Village, transport hub, tram line, cafes, and the Health Precinct.

The open plan modern design has been well thought out and planned with convenience and comfort in mind. Featuring a spacious kitchen with quality fittings and fixtures that flows seamlessly through to the living area and balcony beyond, three good-sized bedrooms all with built in's, a study or 4th bedroom and two generous bathrooms with luxurious rain showerheads.

Property Features:



**Disclaimer:** All information contained therein is gathered from relevant third parties sources. We cannot guarantee or give any warranty about the information provided. Interested parties must rely solely on their own enquiries.

3

2

2

**For Sale**

Offers over \$699,000

**View**

[ljhooker.com.au/YZ7F4K](http://ljhooker.com.au/YZ7F4K)

**Contact**

**Ben Latimer**

0402 921 314

[blatimer.southport@ljhooker.com.au](mailto:blatimer.southport@ljhooker.com.au)

**Alex McCormack**

0411 510 099

[amccormack.southport@ljhooker.com.au](mailto:amccormack.southport@ljhooker.com.au)

**LJ Hooker Southport**  
**(07) 5591 5222**

- Main bedroom with walk in robe, ensuite, air conditioning and access to the balcony
- Three bedrooms with built in robes
- Study room or 4th bedroom
- Second bathroom
- Separate laundry room with clothes dryer
- Spacious living and dining area opening onto large balcony
- Air conditioning
- Kitchen with island bench top, quality fixtures and lots of storage space
- Large balcony
- 2 secure car spaces
- Reasonable body corporate
- Roof top recreational area exclusively for the residents of the complex
- Southport CBD - 2.1km approx.
- Southport State School - 2.7km approx.
- St Hildas Private School - 900m approx.
- The Southport School - 2.7km approx
- Lift access and intercom

Spendelove Residences is a Boutique complex with roof top BBQ facilities, Zen garden, recreational area and views of the Ocean and Gold Coast City. This fantastic property owner occupied, so ready to move into or take advantage of our very buoyant rental market.

## More About this Property

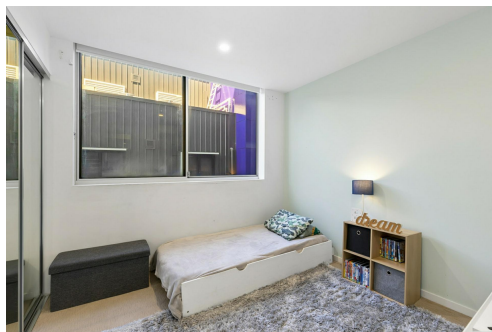
Property ID	YZ7F4K
Property Type	Apartment
Including	Air Conditioning Intercom Balcony Dishwasher Built-in-Robes

**Ben Latimer**  
Sales Consultant/Director | [blatimer.southport@ljhooker.com.au](mailto:blatimer.southport@ljhooker.com.au)  
**Alex McCormack**  
Principal/Licensee | [amccormack.southport@ljhooker.com.au](mailto:amccormack.southport@ljhooker.com.au)

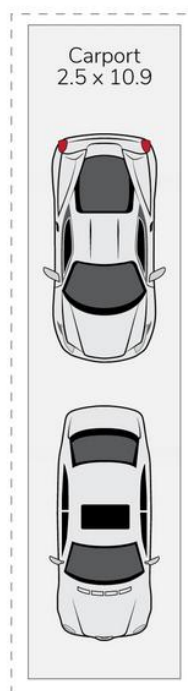
**LJ Hooker Southport (07) 5591 5222**  
2308-2309 Level 3 Southport Central, Tower 2, 5 Lawson Street,  
SOUTHPORT QLD 4215  
[southport.ljhooker.com.au](http://southport.ljhooker.com.au) | [southport@ljhooker.com.au](mailto:southport@ljhooker.com.au)



**Disclaimer:** All information contained therein is gathered from relevant third parties sources. We cannot guarantee or give any warranty about the information provided. Interested parties must rely solely on their own enquiries.



**LJ Hooker Southport**  
**(07) 5591 5222**



201/26 SPENDELOVE AVENUE, SOUTHPORT

This floor plan is for marketing purposes only. Dimensions and layout are approximate.  
Mountfort Media gives no guarantee or warranty over the accuracy of this plan.



INTERNAL AREA:	101M	
EXTERNAL AREA:	37M	
TOTAL AREA:	138M	
		
3	2	2