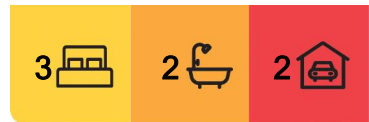




Southport, 20/D Bauer Street

Tranquil Living at Eden Garden Residences

Step into your new home at Eden, where meticulous attention to detail transforms spaces into serene sanctuaries. Coastal timber floors and plush carpets greet your feet, leading you to the heart of the home. The open living areas, flooded with natural light through expansive double-glazed windows, offer stunning city vistas. Enjoy the seamless transition from living to dining, ideal for entertaining guests or intimate family gatherings. Quality fittings and fixtures adorn the interiors, creating a harmonious blend of style and functionality. For culinary enthusiasts, Eden offers thoughtfully designed kitchens that are as practical as they are stylish. Selected stone finishes and bespoke joinery adorn the space, offering both aesthetic appeal and ample storage solutions. Whether you're a novice cook or an experienced chef, these kitchens will inspire your culinary adventures. Your sanctuary awaits in the master bedroom, where comfort meets sophistication. Plentiful natural light illuminates the space, complemented by generous robe space and luxurious wool-blend carpets. These bedrooms are designed for rest and rejuvenation, ensuring your private haven within Eden. Every element in Eden's bathrooms reflects



For Sale
From \$1,520,000

View
By Appointment

Contact
Ben Latimer
0402 921 314
blatimer.southport@ljhooker.com.au
Alex McCormack
0411 510 099
amccormack.southport@ljhooker.com.au



LJ Hooker Southport
(07) 5591 5222

Disclaimer: All information contained therein is gathered from relevant third parties sources. We cannot guarantee or give any warranty about the information provided. Interested parties must rely solely on their own enquiries.

elegance and functionality. Floor-to-ceiling specialty tiles, luxurious brushed gold tapware, mosaic features, and stone accents create a serene atmosphere for self-care. Neutral colour palettes provide a polished, open feel, enhancing the overall design of your private retreat.

At Eden, the focus extends beyond the interiors. Enjoy the convenience of integrated home offices, secure basement car parking, generous private balconies, and ground floor facilities. Embrace a holistic approach to well-being with a fully equipped gymnasium, complete with a private outdoor yoga area sheltered by lush green foliage.

Eden's communal rooftop terrace offers a breath-taking 270-degree view of the Gold Coast, Broadwater, and the mesmerizing skyline. Whether you wish to socialize with neighbours, host guests, or simply watch the sunset in tranquility, this space provides the perfect backdrop.

More About this Property

Property ID	Z7FF4K
Property Type	Apartment
Including	Air Conditioning Balcony Outdoor Entertaining Floorboards Built-in-Robes Secure Parking

Ben Latimer 0402 921 314

Sales Consultant/Director | blatimer.southport@ljhooker.com.au

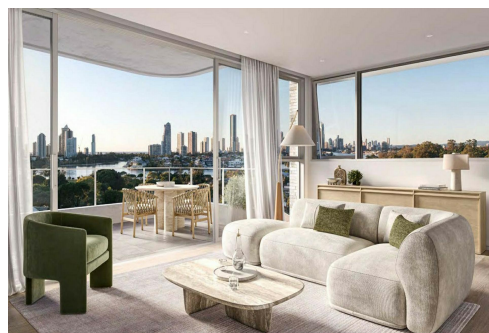
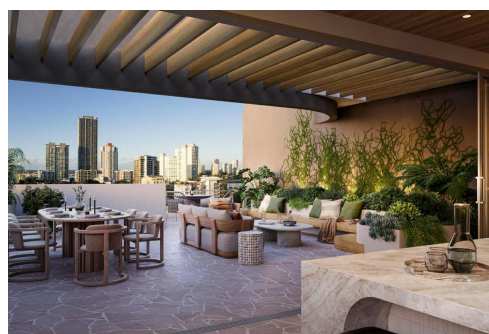
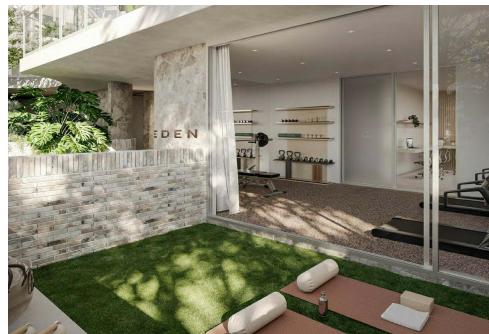
Alex McCormack 0411 510 099

Principal/Licensee | amccormack.southport@ljhooker.com.au

LJ Hooker Southport (07) 5591 5222

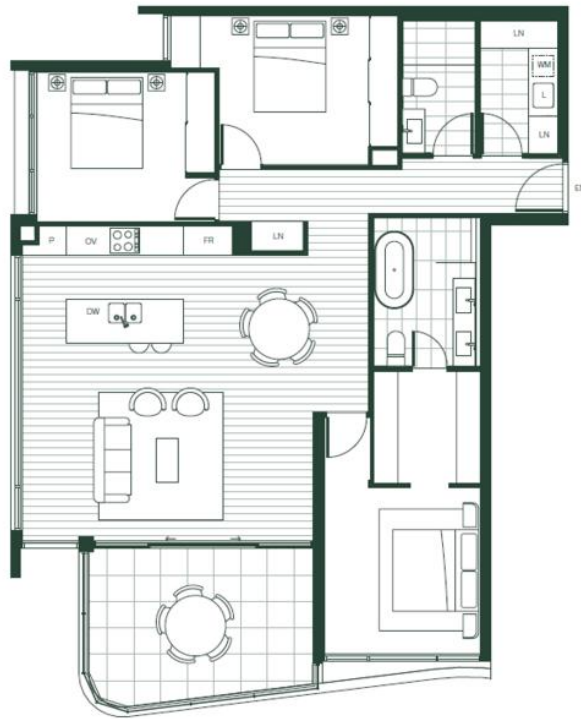
2308-2309 Level 3 Southport Central, Tower 2, 5 Lawson Street, SOUTHPORT QLD 4215

southport.ljhooker.com.au | southport@ljhooker.com.au



LJ Hooker Southport
(07) 5591 5222

Disclaimer: All information contained therein is gathered from relevant third parties sources. We cannot guarantee or give any warranty about the information provided. Interested parties must rely solely on their own enquiries.



EDEN
GARDEN RESIDENCES

LEVEL 2 - B TYPE

D

3 BED - 2 BATH - 3 CAR

Interior	180m ²
Balcony	5m ²
Total Area	185m ²



EN	Entry	FR	Fridge (full height)	DW	Dishwasher	WM	Washing Machine
LN	Linens/Storage	OV	Oven	P	Pastry	L	Laundry Sink

DISCLAIMER:
These drawings are conceptual design drawings only. The information contained herein is subject to design development and further input from independent planning, structural services and other technical consultants.