

408A/58 Dorcas Street, Southbank

2 🏠 1 🚿 1 🚗

An Inspired Lifestyle at 408A/58 Dorcas Street, Southbank

FOR SALE
\$585,000 - \$635,000

AGENCY
LJ Hooker City Residential
(03) 9600 2166

Drawing inspiration from world-class luxury resorts, Evermore Apartment delivers an unparalleled standard of metropolitan living, where design sophistication meets everyday comfort. Every space has been thoughtfully crafted to create a seamless flow between private sanctuary and vibrant shared community.

Inside, natural finishes take centre stage. Gourmet kitchens showcase elegant stone benchtops, rich timber accents, premium storage solutions, and state-of-the-art Miele appliances. Bathrooms impress with spacious layouts, brass fixtures, and refined details, while timber flooring elevates the living zones and plush wool carpets ensure bedroom comfort.

Generous bedrooms extend onto private balconies, where leafy outlooks invite calm and relaxation. Beyond your front door, lush landscaped gardens weave through the precinct, softening the architectural lines with greenery and tranquillity.

The exclusive residents' amenities rival those of a six-star retreat: unwind by the sparkling pool with sun lounges and cabanas, stay active in the fully equipped gymnasium, focus in the quiet study and

All information contained therein is gathered from relevant third parties sources. We cannot guarantee or give any warranty about the information provided. Interested parties must rely solely on their own enquiries.

 **LJ Hooker**

library zones, or indulge in the private Gold Class-style cinema.

Perfectly positioned just moments from Melbourne's CBD, this address sits within the city's premier arts and cultural precinct. The Royal Botanic Gardens, South Melbourne Market, cafés, and transport are all at your doorstep —offering convenience and lifestyle in one.

This is cosmopolitan living at its finest —stylish, connected, and undeniably luxurious.

MORE DETAILS

Property ID P1QHC2
Property Type Apartment

LJ Hooker City Residential (03) 9600 2166

Upper Ground Floor, 439-445 Lonsdale St, MELBOURNE VIC 3000
cityresmelbourne.ljhooker.com.au |
cityresmelbourne@ljhooker.com.au



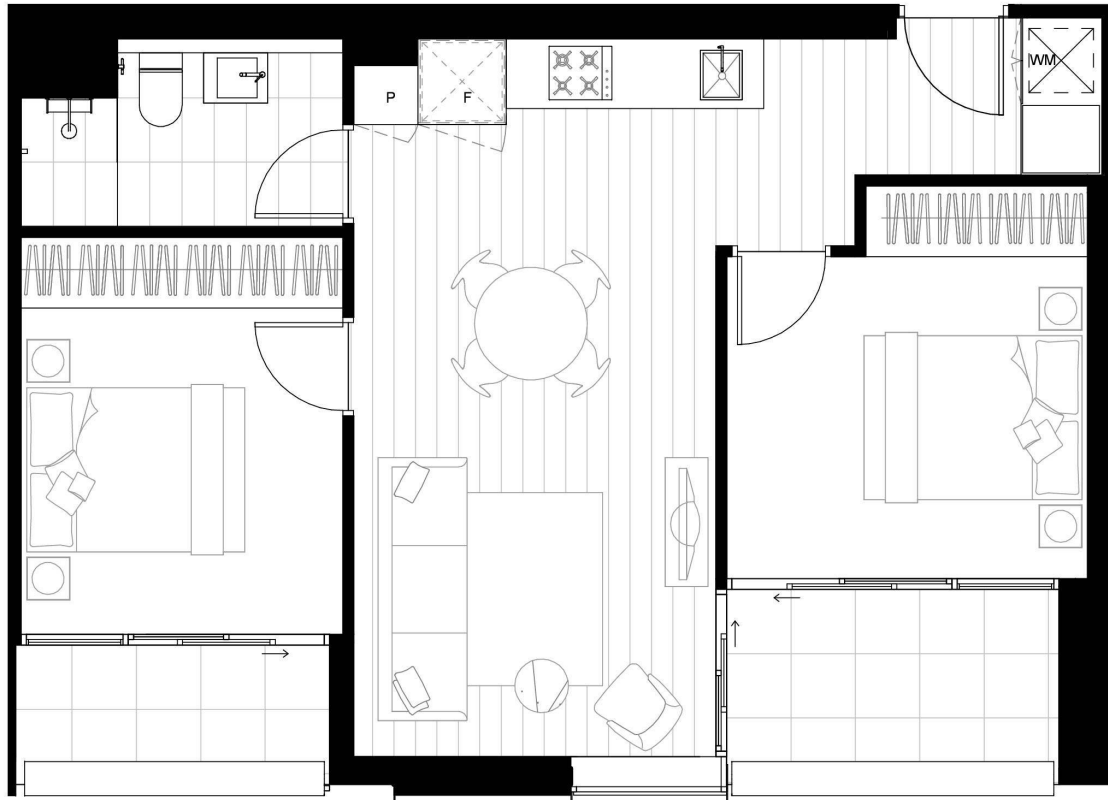


THE EVERMORE

MELBOURNE

WEST TOWER APARTMENT TYPE 2N.1

2.06, 3.06, 4.08

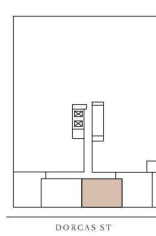


0 0.5 1 2m



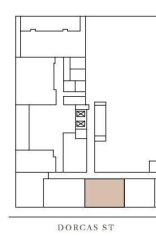
BEDROOM	2
BATHROOM	1
CARPARK	1
INTERNAL AREA	64.5m ²
TERRACE AREA	6.0 + 4.0m ²
TOTAL AREA	74.5m²

L 2



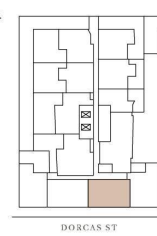
DORCAS ST

L 3



DORCAS ST

L 4



DORCAS ST

The information provided is illustrative only and may not be relied upon. In particular, the final area dimensions of any apartment sold will be determined by the contract of sale and may differ from the depicted. Whilst every effort is made to provide accurate and complete information, the developer does not warrant or represent that the information in this floor plan is free from errors or omissions or is suitable for your intended use. Subject to any terms implied by law which cannot be excluded, the developer accepts no responsibility for any loss, damage, cost or expense (whether direct or indirect) by you as a result of any error, omission or misrepresentation in information. All information is subject to change without notice.

All information contained therein is gathered from relevant third parties sources.
We cannot guarantee or give any warranty about the information provided.
Interested parties must rely solely on their own enquiries.

