




1503/245 City Road, Southbank

2  2  0 

Elegant Urban Living at Palladium Tower Southbank!

Palladium Tower is a testament to cosmopolitan elegance, soaring majestically across 51 floors in the vibrant heart of Southbank. This architectural masterpiece stands as an embodiment of contemporary refinement and offers unparalleled access to the most sought-after destinations in Melbourne.

Elevated on the 15th floor, this two-bedroom, two-bathroom residence is the quintessential choice for discerning occupants and savvy investors. It presents the promise of substantial rental returns and the potential for lucrative Airbnb utilization. With an internal space of approximately 69.4m² and an additional 4.4m² balcony, this dwelling offers an expansive total area of around 73.8m².

Within this sophisticated haven, an array of notable features elevates the living experience:

- A spacious floor plan adorned with luxury finishes and a modern colour scheme.
- Quality hardwood flooring gracing the living area, creating a warm and inviting ambiance.
- Plush carpets that enhance the comfort of both bedrooms, providing a cozy retreat.

FOR SALE

On hold

VIEW

By Appointment

AGENTS

Kobe Li
0434 566 941
kli.rowville@ljhooker.com.au

Kobe Li
0434 566 941
kli.rowville@ljhooker.com.au

AGENCY

LJ Hooker Rowville
(03) 9132 5118

All information contained therein is gathered from relevant third parties sources.
We cannot guarantee or give any warranty about the information provided.
Interested parties must rely solely on their own enquiries.

 **LJ Hooker**

- A well-appointed kitchen, complete with premium brand appliances, including a dishwasher, gas stove with multiple burners, a branded oven, and a built-in microwave.
- The convenience of split-system air conditioning/heating in the lounge room, ensuring year-round comfort in Melbourne's varying climate.

Enjoy an abundance of indoor and outdoor communal spaces, including lounges, entertainment areas and function room. For those with well-being and fitness in mind, the tower offers a remarkable, fully-equipped gymnasium. It provides panoramic views of Port Philip Bay and is complemented by a swimming pool, a sauna, and a spa, offering serene escapes for relaxation and rejuvenation.

Unrivalled Location: The strategic positioning of this apartment makes it a highly sought-after choice. You'll find yourself just moments away from iconic South Melbourne Market, the lush Botanic Gardens, the vibrant DFO South Wharf, the captivating Crown Entertainment Complex, and Melbourne's bustling CBD. The convenience is further heightened by the presence of a boutique Woolworths store located within the building, ensuring easy access to your grocery and everyday needs.

This is your exclusive invitation to embrace an enriched inner-city lifestyle, where every conceivable convenience awaits right at your doorstep. Don't delay; contact us now to arrange an exclusive viewing!

- Photo ID required

MORE DETAILS

Property ID	27NHWN
Property Type	Apartment
Including	Ensuite Air Conditioning Intercom Built-in-Robes Carpeted Close to Schools Close to Shops Close to Transport Heating Liveability

Kobe Li 0434 566 941

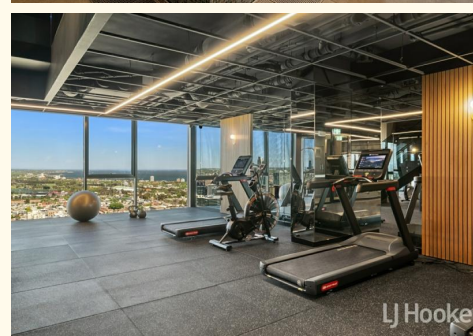
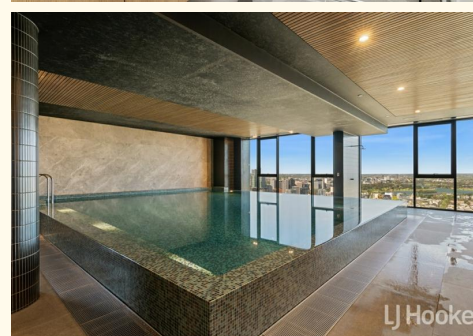
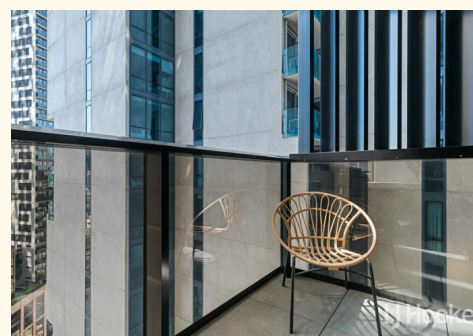
Managing Director, OIEC | kli.rowville@ljhooker.com.au

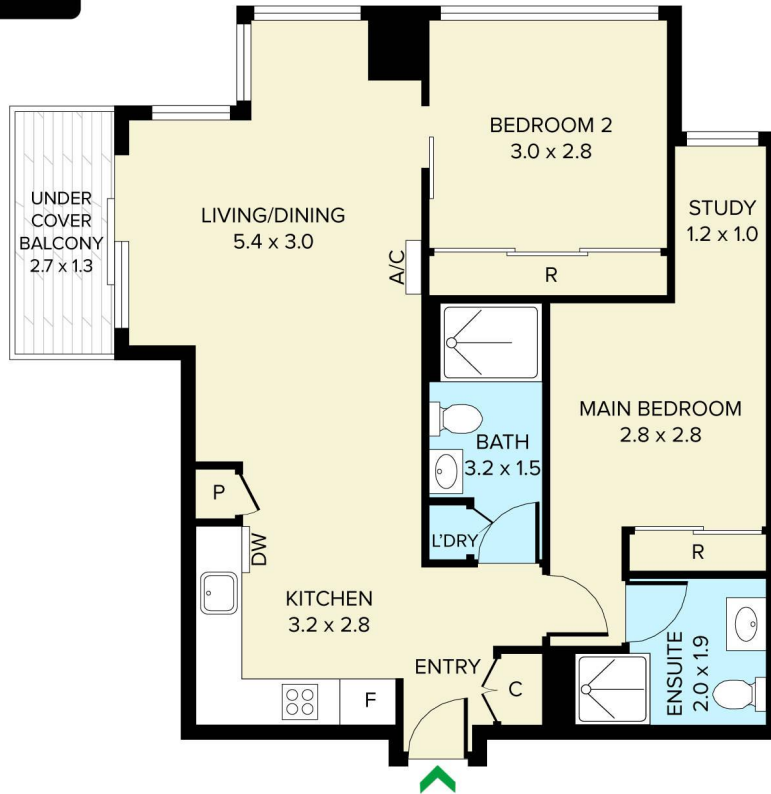
Kobe Li 0434 566 941

Managing Director, OIEC | kli.rowville@ljhooker.com.au

LJ Hooker Rowville (03) 9132 5118

Unit 11-12/ 7 Fulham Road, ROWVILLE VIC 3178
rowville.ljhooker.com.au | rowville@ljhooker.com.au





THIS PLAN IS NOT TO SCALE. MEASUREMENTS ARE INDICATIVE AND IN METRES. SITE PLAN REFLECTS APPROXIMATE POSITION OF BUILDINGS ON PROPERTY ONLY AND IS NOT AN ACCURATE REPRESENTATION OF VEGETATION AND OTHER EXTERNAL LANDSCAPE FEATURES. THIS PLAN SHOULD NOT BE RELIED UPON AND INTERESTED PARTIES SHOULD MAKE THEIR OWN ENQUIRIES.

floorpik by scandipik