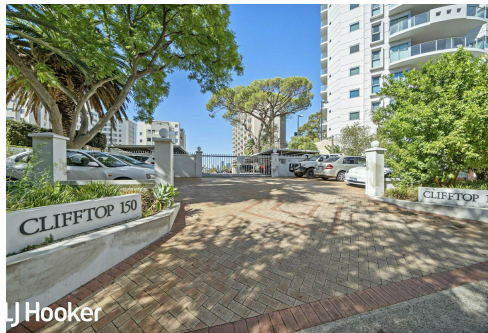




LJ Hooker



LJ Hooker



LJ Hooker



LJ Hooker

South Perth, 63/150 Mill Point Road

HOME OPEN CANCELLED – UNDER OFFER!!

Nestled in the heart of South Perth, this cherished and strategically located apartment, held by one family for many years, has undergone a remarkable transformation. No expense was spared in the recent upgrade, tailored for their own enjoyment, but now it's time for a new chapter.

Perched on the 6th floor, it offers unparalleled views of Perth skyline and the South Perth Foreshore from the balcony, and glimpses of Melville Water.

HIGHLIGHTS:

- * Positioned on the 6th floor
- * Fabulous views standing at the entrance to this apartment and from your balcony
- * Open the front door and you will be blown away at the brand new stunning



Disclaimer: All information contained therein is gathered from relevant third parties sources. We cannot guarantee or give any warranty about the information provided. Interested parties must rely solely on their own enquiries.



For Sale

Please Call

View

ljhooker.com.au/5E8QFFB

Contact

Diane Sheppard

0420 216 066

diane.sheppard@ljhvicpark.com.au

Michael Sheppard

0433 275 080

michael.sheppard@ljhvicpark.com.au

**LJ Hooker Victoria Park | Belmont
(WA)**

(08) 9473 7777

kitchen, featuring a waterfall stone island benchtop, glass splashbacks, abundant soft closing cupboards, and a pop-up electric cabling panel in breakfast bar, and a dishwasher - This kitchen is larger than most homes have - just beautiful!

- * Elegant laminate plank flooring throughout
- * Open plan lounge and dining area leading to a balcony with stunning city views. The living area is complimented by a reverse cycle air conditioning unit
- * Fully renovated bathroom with floor-to-ceiling tiling, shower, handbasin, and toilet
- * Newly installed blackout blinds and window dressings - perfect for the shift worker, nurses or FIFO working, allowing peaceful sleep in daylight hours
- * Master bedroom boasts double robes, air conditioning and captivating city views
- * Second bedroom includes abundant shelving, and blackout blinds
- * One allocated car bay for convenient city living
- * Brand new DOUBLE GLAZED windows and sliding door ensure tranquility and assisting with cooling and heating
- * This home caters perfectly for nurses or FIFO working needing to sleep during the day, as the double glazing and block out blinds allow that peaceful ambiance you desire

COMMUNAL AREAS:

- * Access to 4,693sqm of riverfront land, with private exclusive gated entry to the South Perth foreshore
- * Welcoming foyer entrance, communal gardens, and BBQ seating area
- * Impeccably maintained and secure complex with caretaker, communal laundry, and secure drying area for laundry and bike racks

This complex occupies a prime location in South Perth, with easy access to the free-way, South Perth Ferry, and bus routes. The vibrant Mends Street cafe strip, offering local amenities like IGA and an array of eateries, to suit different styles and taste buds, are all literally just steps away.

Wake up to the serene sounds of nature or embrace the tranquility with the double glazing. Enjoy proximity to Perth Zoo and Kings Park, basking in the beauty of your new home.

This unit caters to various buyer profiles: first-time buyers, city dwellers, or those seeking to downsize.

**** THIS IS A NO PET COMPLEX**

Call for a private viewing if you miss a home open

Council Rates PA: \$1,759.00

Water Rates PA: \$950.04

Strata admin PQ: \$1,115.10



**LJ Hooker Victoria Park | Belmont
(WA)
(08) 9473 7777**

Disclaimer: All information contained therein is gathered from relevant third parties sources. We cannot guarantee or give any warranty about the information provided. Interested parties must rely solely on their own enquiries.

More About this Property

Property ID	5E8QFFB
Property Type	Unit
House Size	62 m ²

Diane Sheppard 0420 216 066

Real Estate and Business Agent | diane.sheppard@ljhvicpark.com.au

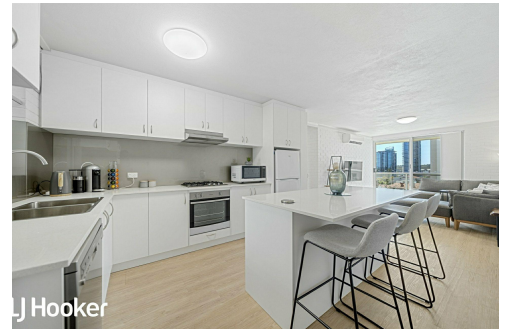
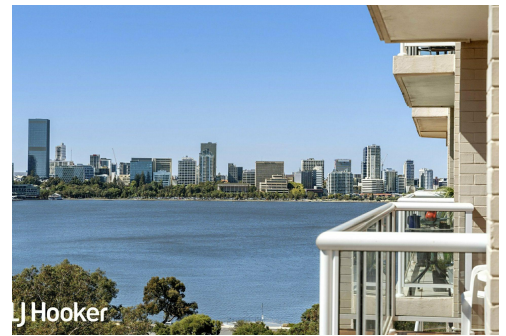
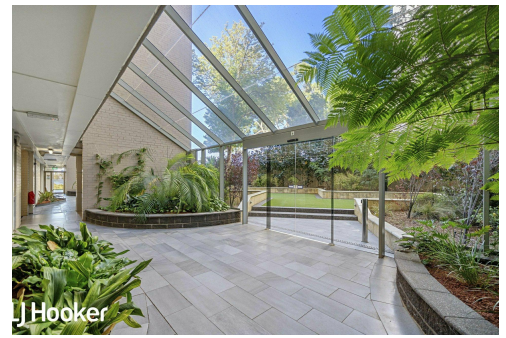
Michael Sheppard 0433 275 080

Sales Consultant | michael.sheppard@ljhvicpark.com.au

LJ Hooker Victoria Park | Belmont (WA) (08) 9473 7777

288 Albany Highway, VICTORIA PARK WA 6100

victoriapark-belmontwa.ljhooker.com.au | reception@ljhvicpark.com.au



LJ Hooker Victoria Park | Belmont (WA)

(08) 9473 7777

Disclaimer: All information contained therein is gathered from relevant third parties sources. We cannot guarantee or give any warranty about the information provided. Interested parties must rely solely on their own enquiries.