



42/150 Mill Point Road, South Perth

2  1  1 

## Move In Ready | South Perth Apartment | River & City Views

**FOR SALE**  
SOLD | By Kim Liew

**AGENTS**  
Kim Liew  
0430 015 796  
kim.liew@ljhvicpark.com.au

**AGENCY**  
LJ Hooker Victoria Park | Belmont (WA)  
(08) 9473 7777

### ACCOMODATION

This immaculate 2 beds 1 bath apartment offers everything you want in South Perth's best location. Situated on the 4th floor of the well maintained Clifftop 150 Complex, this bright and spacious apartment on Mill Point Road delivers the complete package in space and comfort. It is ideal for first home buyers, downsizers or investors.

Bathed in natural light and designed with a smart, functional layout for effortless living. The updated kitchen features an expansive stone benchtop with plenty of inbuilt cupboard spaces for storage. Enjoy captivating city and river views that twinkle at night from your private balcony.

Both bedrooms are generous in size, with a built in robe in the master bedroom and a wardrobe in the second bedroom. The bathroom has been modernised.

Whether you're buying your first home, downsizing, or investing, this apartment delivers space, style, and a prime South Perth address. Don't miss out —inspect today!

All information contained therein is gathered from relevant third parties sources. We cannot guarantee or give any warranty about the information provided. Interested parties must rely solely on their own enquiries.

 **LJ Hooker**

## FEATURES AND BENEFITS

- Bright & Fresh Interior - Freshly painted in neutral tones, ready for your personal touch
- Quality Flooring - Practical and stylish floorboards throughout the living area and bedrooms
- Modern Kitchen - 4-burner gas cooktop, oven, rangehood, ample bench space, and storage
- Swan River and City Views from your private balcony - perfect for morning coffees or sunset drinks
- Comfort All Year Round - Split-system air conditioning in the open-plan living area
- Generous Storage - Built-in robe, wardrobe, and linen cupboard
- Secure & Convenient - Security screen door, automatic gated entry, and undercover car bay
- Low-Maintenance Living - Shared laundry, manicured gardens and well maintained compound

## INVESTOR INFORMATION

- Forecast rent return ~ \$600 per week.

## RATES AND STRATA LEVY

- Council Rates \$1,911.37 FY25/26
- Water Rates \$983.22 FY24/25
- Strata Admin Levy \$1,100.00 per quarter
- Strata Reserve Levy \$117.00 per quarter
- Strata Special Levy \$300.00 per quarter

## LOCATION

What sets this apartment apart is its golden location - stroll to Mill Point Road's cafes, enjoy Swan River sunsets and access the CBD with ease. With easy access to pedestrian walkways, cycleways, buses and the ferry.

You have many first class amenities all within easy reach such as the historic Windsor hotel, Perth Zoo, and Mends Street or Angelo Street shopping / restaurant precincts. Beautiful parks and lifestyle facilities are just a short walk away including the South Perth foreshore and Fletcher Park.

## CONTACT

Represented by Kim Liew, to book your viewing, contact Kim directly, or text "42/150 Mill Point Road" to 0430 015 796 for your free digital brochure.

## MORE DETAILS

Property ID	5GADFFB
Property Type	Apartment
House Size	62 m2
Land Area	62 m2
Including	Air Conditioning
	Balcony
	Floorboards
	Secure Parking
	City Views
	Close to Schools
	Close to Shops
	Close to Transport
	Lift Installed
	River Views

**Kim Liew 0430 015 796**

Sales Consultant | [kim.liew@ljhvicpark.com.au](mailto:kim.liew@ljhvicpark.com.au)

**LJ Hooker Victoria Park | Belmont (WA) (08) 9473 7777**

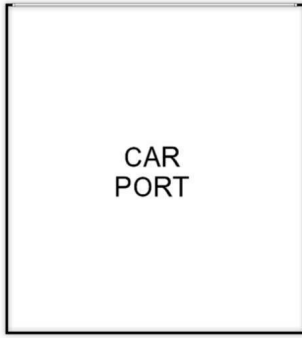
288 Albany Highway, VICTORIA PARK WA 6100

[victoriapark-belmontwa.ljhooker.com.au](http://victoriapark-belmontwa.ljhooker.com.au) |

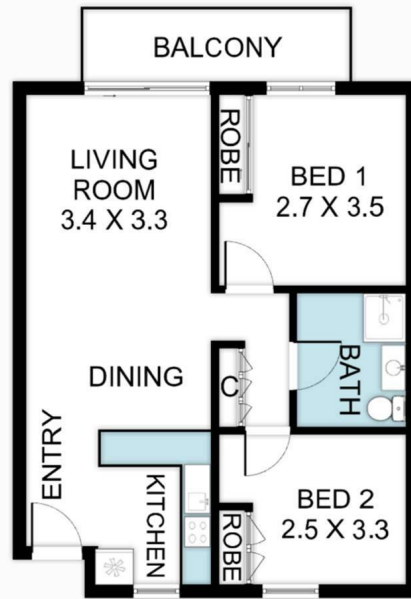
[reception@ljhvicpark.com.au](mailto:reception@ljhvicpark.com.au)



All information contained therein is gathered from relevant third parties sources.  
We cannot guarantee or give any warranty about the information provided.  
Interested parties must rely solely on their own enquiries.



(Not In Position)



## 42/150 Mill Point Rd, South Perth WA 6151

Whilst every attempt has been made to ensure the accuracy of the floor plan contained here, measurements of doors, windows, rooms and any other items are approximate and no responsibility is taken for any error, omission, or misstatement. This plan is for illustrative purposes only and should be used as such by any prospective purchaser.