



40 Till Street, South Hill

FAMILY FRIENDLY, & READY!

Set in the ever-popular South Hill area, the home offers space, comfort, and convenience - perfect for families wanting to be in the Fenwick School zone and close to town.


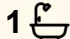

Inside, you'll find three double bedrooms plus a handy office or study, ideal for working from home or homework time. The updated kitchen is light and functional, flowing easily into the living area, where a brand-new heat pump (installed October 2025) keeps the home warm and welcoming all year round.

With two toilets, busy mornings are a breeze, and the freshly painted interior gives everything a bright, modern feel.

Outside, there's a large single garage and workshop with off-street parking, providing plenty of space for vehicles, bikes, or storage.

This is an easy-care, move-in-ready home in a top location - perfect for families, first-home buyers, or investors looking to add a solid property to their portfolio.

Fresh, convenient, and ready for you - homes like this don't last long in South Hill.

3  1  1 

FOR SALE

Buyer Enquiry Over \$369,000

AGENTS

Sheryl Heta
027 414 5256
sherylh@ljoamaru.co.nz

AGENCY

LJ Hooker Oamaru
(03) 434 9014
Robertson Real Estate Limited

All information contained therein is gathered from relevant third parties sources.
We cannot guarantee or give any warranty about the information provided.
Interested parties must rely solely on their own enquiries.

 **LJ Hooker**

Buyer Enquiry Over \$369,000

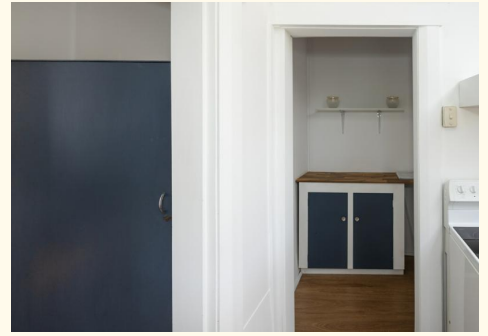
Contact Sheryl Heta at 0274 145 256

MORE DETAILS

Property ID W23GF3
Property Type House
House Size 108 m2
Land Area 1012 m2
Licensed Real Estate Agents (REAA2008)

Sheryl Heta 027 414 5256
Property Consultant | sherylh@ljhoamaru.co.nz

LJ Hooker Oamaru (03) 434 9014
Robertson Real Estate Limited
193 Thames Street, OAMARU 9400
oamaru.ljhooker.co.nz | info@ljhoamaru.co.nz



All information contained therein is gathered from relevant third parties sources.
We cannot guarantee or give any warranty about the information provided.
Interested parties must rely solely on their own enquiries.