



24/87 Clarke Street, South Bunbury

## South Bunbury Opportunity

Located in the highly sought-after suburb of South Bunbury, this well presented three-bedroom, two-bathroom home offers an appealing lifestyle just minutes from the beach, Bunbury CBD and town centre.

Designed for comfort, all bedrooms are fitted with ceiling fans, while the master bedroom features a walk-in robe and private ensuite. Split-system air conditioning services the open-plan living area, master bedroom and second bedroom, ensuring year-round climate control.

The light-filled open-plan kitchen and living space seamlessly extends to a gabled-roof, wrap-around alfresco area-perfect for entertaining family and friends. Additional highlights include solar power, a double garage and convenient shopper's entry.


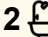
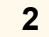
Currently leased at \$600 per week until 2 February 2027, this property presents a secure and attractive investment opportunity.

Approximate annual outgoings:

Council Rates: \$2,814.88

Water Rates: \$1,313.53

Strata Levies: \$970.00

3  2  2 

### FOR SALE

Offers Over \$675,000

### AGENTS

Helen Povey

0409 295 259

[helen.povey@ljhsouthwest.com.au](mailto:helen.povey@ljhsouthwest.com.au)

### AGENCY

LJ Hooker Property South West WA  
(08) 9791 6880

All information contained therein is gathered from relevant third parties sources.  
We cannot guarantee or give any warranty about the information provided.  
Interested parties must rely solely on their own enquiries.



A quality home in a prime South Bunbury location, ideal for investors or future owner-occupiers alike.

For further information or to arrange a viewing, contact Helen Povey on 0409 295 259.

### MORE DETAILS

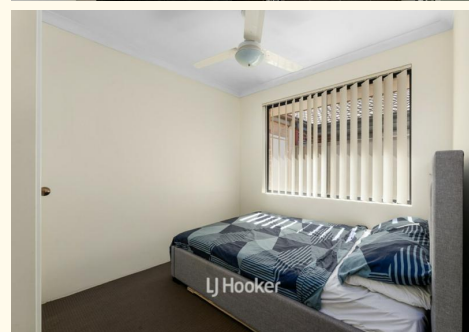
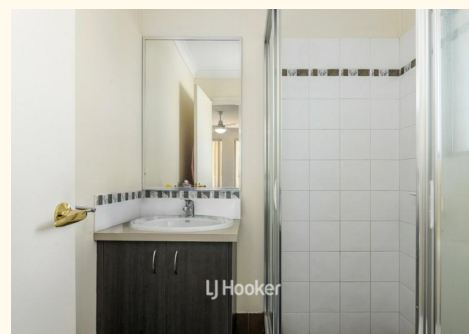
Property ID	19JMHND
Property Type	House
Land Area	277 m2
Including	Ensuite
	Toilets (2)

### Helen Povey 0409 295 259

Licensed Sales Agent | MHRM â€“ Bunbury |  
helen.povey@ljhsouthwest.com.au

### LJ Hooker Property South West WA (08) 9791 6880

130 Victoria Street, BUNBURY WA 6230  
southwestwa.ljhooker.com.au | bunbury@ljhsouthwest.com.au





Please note this floor plan is for marketing purposes and is to be used as a guide only. Measurements are approximate and are for illustrative purposes only.