

South Bunbury, 8 Cummins Place

IMMACULATE FAMILY HOME IN SOUTH BUNBURY



Located in a peaceful cul-de-sac in the sought-after South Bunbury area, this remarkable double brick family home presents an ideal opportunity for your dream living space.

With its captivating curb appeal and immaculate interiors, every corner of this residence exudes warmth and comfort. From the lush greenery adorning the front yard to the tastefully designed living areas, every detail has been thoughtfully curated, offering the perfect blend of comfort, style, and convenience for today's modern family.

Built in 2002 and situated on 691m², features to this property include:

- 4 Bedrooms, 2 bathrooms
- Separate theatre/sitting room enclosed with double french doors
- Seamlessly open plan kitchen and dining area create a spacious and inviting atmosphere
- High ceilings to entry and living area
- Yeah-round comfort with the reverse cycle split system



Disclaimer: All information contained therein is gathered from relevant third parties sources. We cannot guarantee or give any warranty about the information provided. Interested parties must rely solely on their own enquiries.

For Sale
Please Call _____

View
ljhooker.com.au/16FJHND

Contact
Pat Shine
0438 263 068
pat.shine@ljhsouthwest.com.au

LJ Hooker Property South West WA
(08) 9791 6880

- Quality fittings and finishes throughout
- Entertain or unwind in style in under the outdoor alfresco and timber gazebo
- Well established lawns and garden beds
- Double gated access with drive-through to backyard provides convenience and plenty of space for vehicles and storage
- Undercover patio to store caravan and boat
- Garden shed with roller door access
- Nestled in a quiet cul-de-sac

Contact Pat Shine on 0438 263 068 today to schedule your private viewing and make this house your home sweet home!

Rates:

Council Rates: \$2,934.27

Water Rates: \$1,281.53

Disclaimer —whilst every care has been taken in the preparation of this advertisement and the approximate outgoings, all information supplied by the seller and the sellers agent is provided in good faith. Prospective purchasers are encouraged to make their own enquiries to satisfy themselves on all pertinent matters. Images are for illustrative purposes.

More About this Property

Property ID	16FJHND
Property Type	House
Land Area	691 m ²

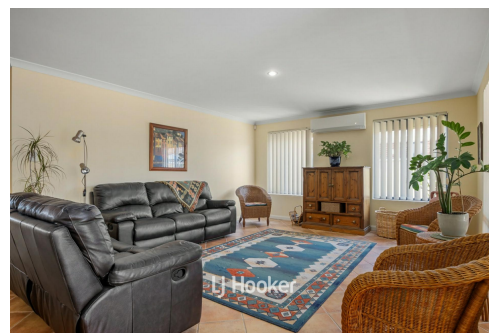
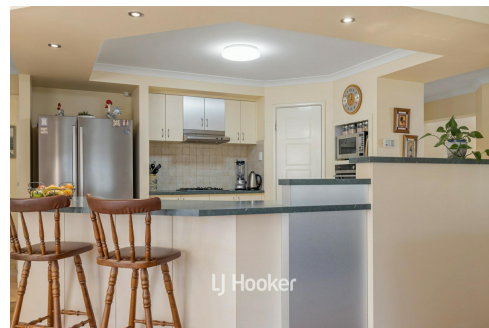
Pat Shine 0438 263 068

Sales Consultant | pat.shine@ljhsouthwest.com.au

LJ Hooker Property South West WA (08) 9791 6880

130 Victoria Street, BUNBURY WA 6230

southwestwa.ljhooker.com.au | bunbury@ljhsouthwest.com.au



**LJ Hooker Property South West WA
(08) 9791 6880**

Disclaimer: All information contained therein is gathered from relevant third parties sources. We cannot guarantee or give any warranty about the information provided. Interested parties must rely solely on their own enquiries.