

South Bunbury, 39 Ashford Place

Exclusive South Bunbury Living

Are you in search of a residence that stands out from the rest? If so this stunning 5 bedroom 2 bathroom home may be just what you are looking for. Set in an exclusive private pocket of South Bunbury, elevated to capture stunning ocean views this family home seamlessly combines elegance with spaciousness.

Designed for both indoor and outdoor entertainment, the property features multiple living areas, making it an ideal space for both daily living and hosting guests. With a modern kitchen, air-conditioning, and a large below-ground swimming pool framed by a secluded treed backdrop, the residence provides a perfect setting for relaxation and gatherings. The pool entertainment area, complemented by a patio, enriches the overall lifestyle experience.

Occupying a generous 810m2 block, the property boasts well-maintained lawns and gardens, along with abundant parking, including a double garage.



Disclaimer: All information contained therein is gathered from relevant third parties sources. We cannot guarantee or give any warranty about the information provided. Interested parties must rely solely on their own enquiries.

5 2 2

For Sale
Offers Over \$899,000

View
ljhooker.com.au/15GXHND

Contact
Rebecca Maskell
0437 085 992
rebecca.maskell@ljsouthwest.com.au

Daniel White
0429 086 856
daniel.white@ljsouthwest.com.au

LJ Hooker Property South West WA
(08) 9791 6880

Features Include:

- 5 bedrooms and 2 bathrooms
- Spacious master bedroom featuring BIR, ceiling fan, and a semi-ensuite with spa
- Four generously sized additional bedrooms, each equipped with built-in robes
- Well-appointed kitchen with abundant storage, stainless steel appliances, & dishwasher
- Elegant loft beam ceilings
- Formal dining and living spaces
- Air conditioning for climate control
- Below-ground pool
- Expansive alfresco and barbecue area for entertaining
- Solar Panels
- Security Cameras
- 2 Car Parking
- Sweeping ocean views

This home has so much to offer, for more information or to book a private inspection call your exclusive agent Rebecca Maskell.

More About this Property

Property ID	15GXHND
Property Type	House
Land Area	810 m ²

Rebecca Maskell 0437 085 992

Sales Consultant | rebecca.maskell@ljhsouthwest.com.au

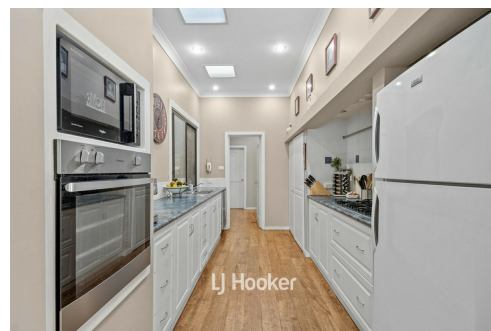
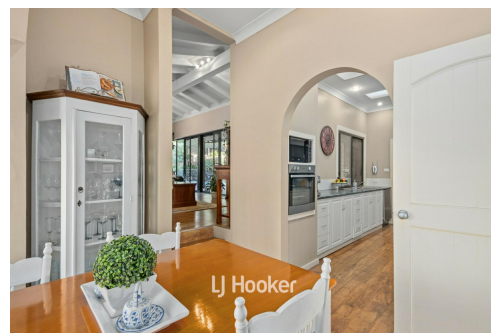
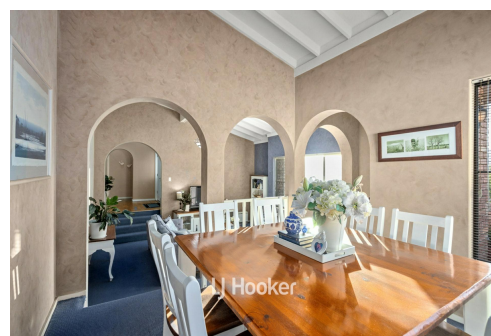
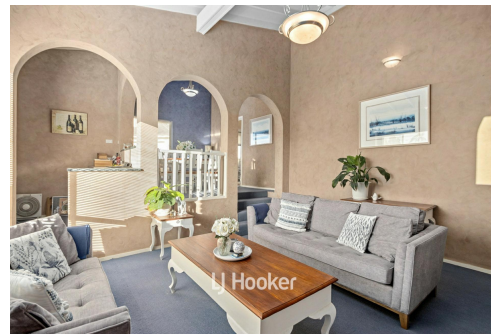
Daniel White 0429 086 856

Sales Consultant | daniel.white@ljhsouthwest.com.au

LJ Hooker Property South West WA (08) 9791 6880

130 Victoria Street, BUNBURY WA 6230

southwestwa.ljhooker.com.au | bunbury@ljhsouthwest.com.au



Disclaimer: All information contained therein is gathered from relevant third parties sources.

We cannot guarantee or give any warranty about the information provided. Interested parties must rely solely on their own enquiries.

**LJ Hooker Property South West WA
(08) 9791 6880**

39 Ashford Place, South Bunbury



This floor plan including furniture, fixture measurements and dimensions are approximate and for illustrative purposes only. BoxBrownie.com gives no guarantee, warranty or representation as to the accuracy and layout. All enquiries must be directed to the agent, vendor or party representing this floor plan.



LJ Hooker Property South West WA
(08) 9791 6880

Disclaimer: All information contained therein is gathered from relevant third parties sources. We cannot guarantee or give any warranty about the information provided. Interested parties must rely solely on their own enquiries.