

South Bunbury, 35 Vickery Crescent

Grand Family Residence with Stunning Views & Exceptional Living Spaces

A rare opportunity awaits to secure a timeless 1970's estate in one of South Bunbury's most sought-after locations. Built in 1972 and the current family have been there since 1991, this expansive four-bedroom, two-bathroom home sits proudly on a 980m² block, offering breathtaking views, generous living spaces, and premium entertaining areas.

From the moment you arrive, you'll be captivated by the solid construction, beautifully maintained gardens, and sense of space this home provides. Step inside and be greeted by neutral tones, an abundance of natural light, and an inviting layout that flows seamlessly from one area to the next.

At the front of the home, the formal lounge sets the tone for elegant living, complete with an adjoining formal dining room, perfect for entertaining guests. This space leads into a sun-drenched seating area, framed by floor-to-ceiling windows that offer breathtaking

4 2 3

For Sale

Offers Over \$1,200,000!

View

Wed 16th Jul @ 5:00PM - 5:30PM

Contact

Helen Povey

0409 295 259

helen.povey@ljhsouthwest.com.au



LJ Hooker Property South West WA
(08) 9791 6880

Disclaimer: All information contained therein is gathered from relevant third parties sources. We cannot guarantee or give any warranty about the information provided. Interested parties must rely solely on their own enquiries.

views. From here, the layout effortlessly transitions into the well-appointed kitchen, the true heart of the home, featuring a large island bench, abundant storage, a dishwasher, and picturesque outlooks that enhance the overall appeal.

Adjacent to the kitchen, you'll find the main living area, ideal for hosting guests or enjoying family meals. The dining room opens directly to the outdoor patio and sparkling pool, creating the ultimate indoor-outdoor entertaining experience. Whether you're enjoying a summer barbecue, an evening by the pool, or simply soaking in the peaceful surrounds, this home provides the perfect setting.

The master suite is a private retreat, complete with a walk-in robe and ensuite, ensuring comfort and practicality. The three additional well-sized bedrooms all feature ceiling fans, making them perfect for guests, children, or a home office. A second well-appointed bathroom adds further convenience for the family.

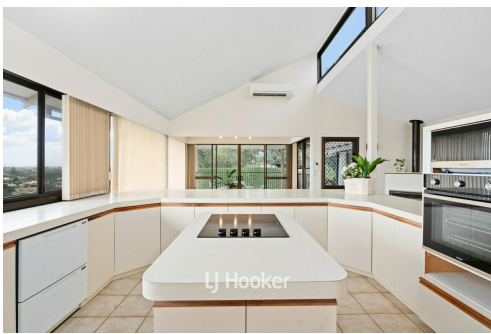
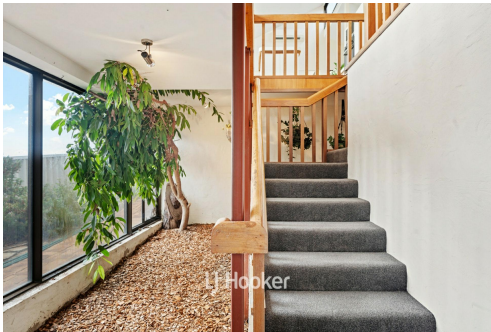
A standout feature of this home is its private lift, which provides effortless access from the spacious garage to the main living area-offering both convenience and accessibility for all occupants. The home boasts two garages, plus a third smaller garage, ideal for extra storage or keeping your weekend toys safe and secure.

Beyond its incredible features, this residence is a true sanctuary, offering privacy, space, and a relaxed lifestyle-just minutes from local amenities, pristine beaches, and parklands.

More than just a home, it's a statement of quality, comfort, and enduring family legacy. Whether you're seeking a forever home, an entertainer's dream, or a property with timeless appeal, this grand family residence delivers on all fronts.

Contact Helen Povey today to arrange a private viewing and experience the charm and elegance of this stunning home for yourself.

Disclaimer: Whilst every care has been taken in the preparation of this advertisement and the approximate outgoings, all information supplied by the seller and the seller's agent is provided in good faith. Prospective purchasers are encouraged to make their own enquiries to satisfy themselves on all pertinent matters. Images are for illustrative purposes



More About this Property

Property ID	174GHND
Property Type	House
Land Area	980 m2
Including	Toilets (2)

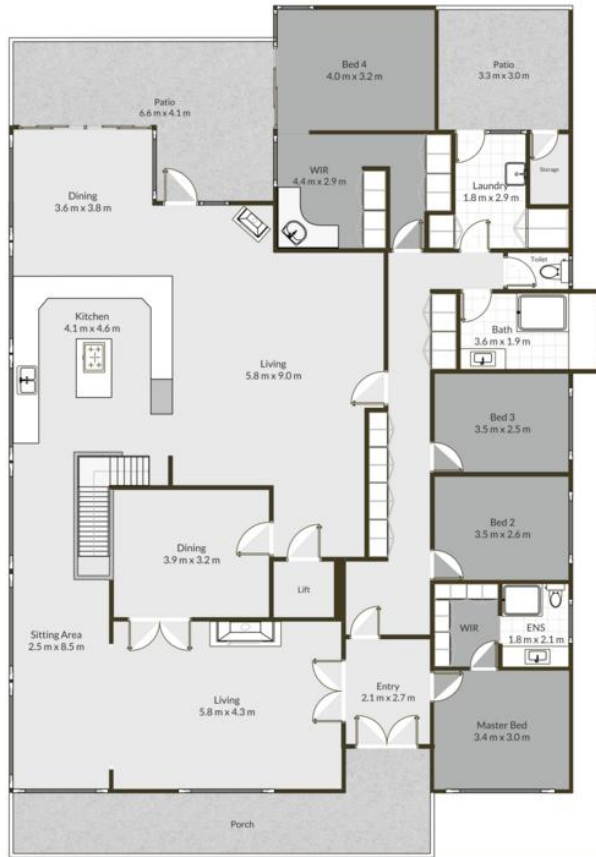
Helen Povey 0409 295 259
Licensed Sales Agent | MHRM | helen.povey@ljhsouthwest.com.au

LJ Hooker Property South West WA (08) 9791 6880
130 Victoria Street, BUNBURY WA 6230
southwestwa.ljhooker.com.au | bunbury@ljhsouthwest.com.au



Disclaimer: All information contained therein is gathered from relevant third parties sources. We cannot guarantee or give any warranty about the information provided. Interested parties must rely solely on their own enquiries.

LJ Hooker Property South West WA
(08) 9791 6880



Helen Povey
0409 295 259



35 Vickery Cres, South Bunbury



Total: 360 m2

Internal: 246 m2

External: 114 m2

This floor plan has been prepared by Eventually Creative. While all measurements are considered reliable, they are not guaranteed and should be independently verified. This floor plan is copyright protected and cannot be reproduced, modified, or used without the permission of Eventually Creative.



LJ Hooker Property South West WA
(08) 9791 6880

Disclaimer: All information contained therein is gathered from relevant third parties sources. We cannot guarantee or give any warranty about the information provided. Interested parties must rely solely on their own enquiries.