



## South Bunbury, 34 Francis Street

### South Bunbury Charm!

Experience the charm of 1980s design in the heart of South Bunbury with this unique gem on Francis Street. This captivating home boasts feature ceilings that create an open and airy atmosphere. With two bedrooms and one bathroom, it offers a comfortable space perfect for small families or first-time buyers.

Set in a highly desirable neighbourhood, this residence blends nostalgic character with modern convenience. Its prime location ensures easy access to local amenities while offering a serene retreat from the hustle and bustle. This home presents a wonderful opportunity to embrace a distinctive lifestyle in South Bunbury.

Positioned on 370m2 block, additional features include:

- Wooden flooring
- Kitchen with ample storage space
- Ceiling fan in the main living area



**Disclaimer:** All information contained therein is gathered from relevant third parties sources. We cannot guarantee or give any warranty about the information provided. Interested parties must rely solely on their own enquiries.



**For Sale**  
Offers Over \$485,000

**View**  
[ljhooker.com.au/166WHND](http://ljhooker.com.au/166WHND)

**Contact**  
**Pat Shine**  
0438 263 068  
[pat.shine@ljhsouthwest.com.au](mailto:pat.shine@ljhsouthwest.com.au)

**LJ Hooker Property South West WA**  
**(08) 9791 6880**

- Split system air conditioning in the main living area
- Evaporative air conditioning throughout
- Carpeted bedrooms
- Spacious shed
- Side access to the rear yard
- Additional parking space available at the front of the property

For more information on this property, Call or Text Pat Shine on 0438 263 068.

Disclaimer —whilst every care has been taken in the preparation of this advertisement and the approximate outgoings, all information supplied by the seller and the sellers agent is provided in good faith. Prospective purchasers are encouraged to make their own enquiries to satisfy themselves on all pertinent matters. Images are for illustrative purposes.

## More About this Property

<b>Property ID</b>	166WHND
<b>Property Type</b>	House
<b>House Size</b>	97 m <sup>2</sup>
<b>Land Area</b>	370 m <sup>2</sup>

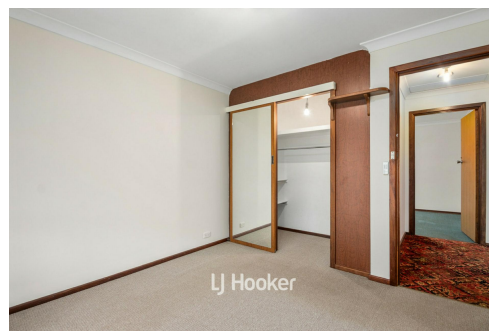
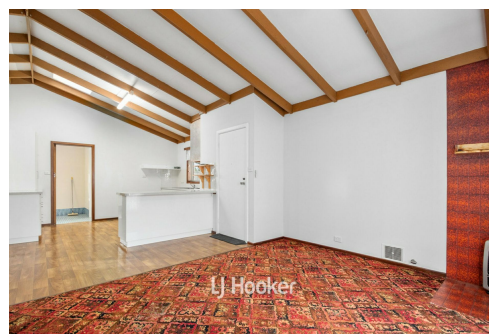
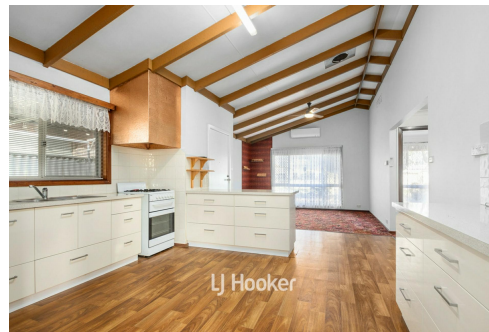
### Pat Shine 0438 263 068

Sales Consultant | [pat.shine@ljhsouthwest.com.au](mailto:pat.shine@ljhsouthwest.com.au)

### LJ Hooker Property South West WA (08) 9791 6880

130 Victoria Street, BUNBURY WA 6230

[southwestwa.ljhooker.com.au](http://southwestwa.ljhooker.com.au) | [bunbury@ljhsouthwest.com.au](mailto:bunbury@ljhsouthwest.com.au)



**LJ Hooker Property South West WA  
(08) 9791 6880**

**Disclaimer:** All information contained therein is gathered from relevant third parties sources. We cannot guarantee or give any warranty about the information provided. Interested parties must rely solely on their own enquiries.