



Sorell, 19 Ollie Drive

Charming Family Residence in Sorell

Welcome to your future home, a spacious and inviting 4-bedroom, 2-bathroom family haven nestled in the heart of the serene suburb of Sorell. This meticulously maintained property, boasting a generous land area of 5,003 sqm, offers an idyllic lifestyle for families seeking comfort, space, and tranquillity in a semi-rural bush setting.

As you approach the home, you are greeted by a striking facade featuring a beautiful brick exterior complemented by a welcoming verandah and a lush, landscaped frontage. The expansive driveway leads to a double garage, providing ample space for vehicles and storage.

Step inside to discover a warm and light-filled interior, where the entrance hall, adorned with elegant stained glass details, sets the tone for the rest of the home. The lovely newly laid flooring guides you through a versatile layout that balances open-plan living with private retreats.



Disclaimer: All information contained therein is gathered from relevant third parties sources. We cannot guarantee or give any warranty about the information provided. Interested parties must rely solely on their own enquiries.

4

2

6

For Sale
Please Call

View
ljhooker.com.au/5W9FFCS

Contact
Alison Rogers
0409 220 211
arogers@ljhookerpinnacle.com

Simone Cooper
0409 029 918
scooper@ljhookerpinnacle.com

LJ Hooker Pinnacle Property
(03) 6272 8177

The heart of the home is the open kitchen, complete with modern appliances, ample cabinetry, and a charming tiled backsplash that adds a splash of colour. The kitchen's design is both functional and stylish, with a view that captures the picturesque surroundings, making meal preparation a delight.

The living area, accentuated by a striking white brick fireplace and high, timber-clad ceilings, offers a cosy and inviting atmosphere for family gatherings. Large sliding doors open onto an entertaining deck, perfect for alfresco dining and soaking up the panoramic views of the natural landscape.

Each of the three bedrooms features built-in wardrobes and stunning views. The master suite features an en-suite bathroom for added convenience along with a walk-in robe. The additional bathroom serves the remaining bedrooms, ensuring that family living is both practical and comfortable.

The expansive outdoor area is a haven for children and adults alike, with plenty of room for outdoor activities, gardening, and simply enjoying the beauty of nature. The property's position captures the essence of suburban living while providing a sense of seclusion and peace.

This family-oriented home in Sorell is more than just a place to live; it's a space where memories are made, and dreams are realised. Don't miss the opportunity to make this cherished residence your own.

Highlights:

- 4 spacious bedrooms, including a master with en-suite
- 2 well-appointed bathrooms
- Double garage with additional off-street parking
- Open-plan living with a cosy fireplace
- Modern kitchen with picturesque views
- Expansive deck for outdoor entertainment
- Large 5,003 sqm block with landscaped gardens

Contact us today to schedule your private viewing and take the first step towards making this beautiful property your new family home.

The information contained herein has been supplied to us and we have no reason to doubt its accuracy, however, cannot guarantee it. Accordingly, all interested parties should make their own enquiries to verify this information.



LJ Hooker Pinnacle Property
(03) 6272 8177

Disclaimer: All information contained therein is gathered from relevant third parties sources. We cannot guarantee or give any warranty about the information provided. Interested parties must rely solely on their own enquiries.

More About this Property

Property ID	5W9FFCS
Property Type	House
House Size	180 m ²
Land Area	5003 m ²
Including	Ensuite Air Conditioning Toilets (2) Courtyard Balcony Deck Dishwasher Outdoor Entertaining Secure Parking Fully Fenced Grey Water System Water Tank

Alison Rogers 0409 220 211

Pinnacle Partner | Sales Consultant | arogers@ljhookerpinnacle.com

Simone Cooper 0409 029 918

Executive Assistant to Alison Rogers | scooper@ljhookerpinnacle.com

LJ Hooker Pinnacle Property (03) 6272 8177

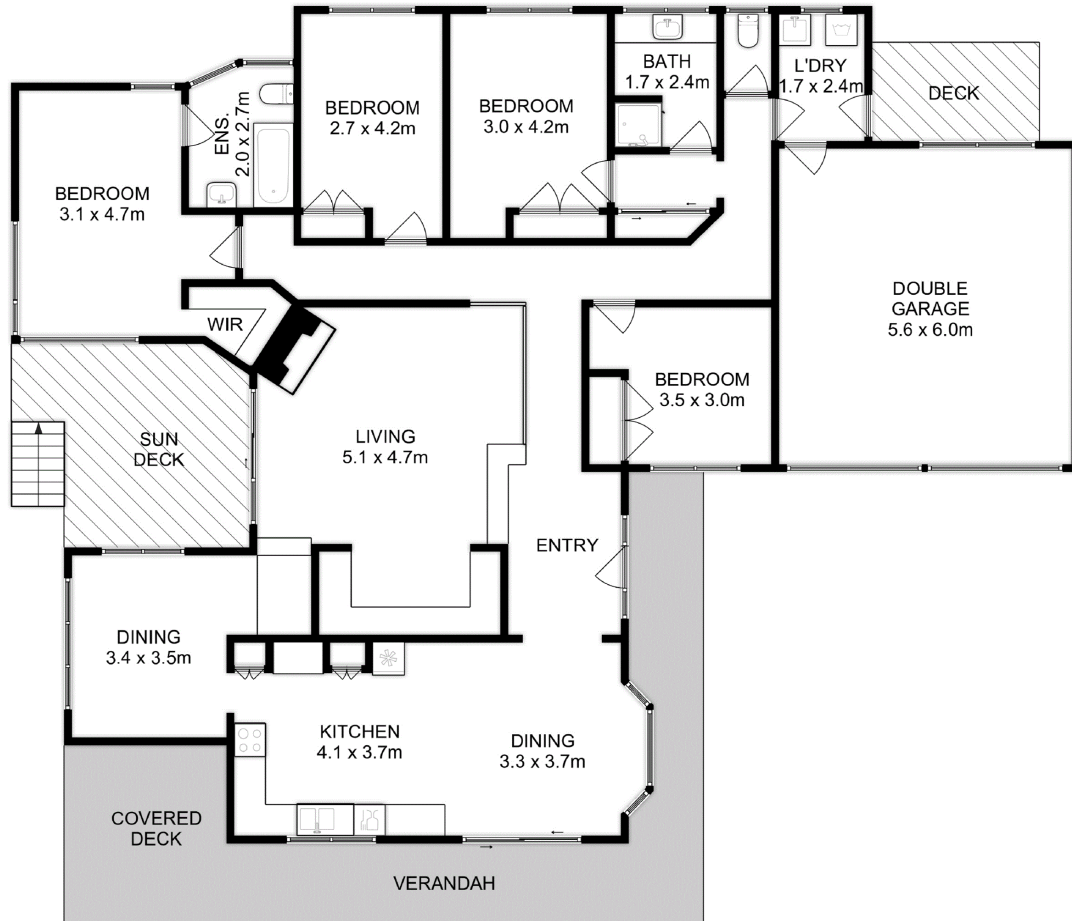
402 Main Road, GLENORCHY TAS 7010

pinnacleproperty.ljhooker.com.au | hello@ljhookerpinnacle.com



Disclaimer: All information contained therein is gathered from relevant third parties sources. We cannot guarantee or give any warranty about the information provided. Interested parties must rely solely on their own enquiries.

LJ Hooker Pinnacle Property
(03) 6272 8177



Total Approx. House Area : 220 sqm
(Including Garage)

All measurements are internal and approximate.
This plan is a sketch for illustration, not valuation.
Produced by Open2view.com