

3/2a Eton Road, Somerton Park

2 1 2

Classic Coastal Charm with Modern Style

Best Offer By Tuesday 9th December at 12pm (USP)

A coastal classic offering charm, style and simplicity in one of Adelaide's most sought-after beachside suburbs. Positioned a short stroll from Somerton's pristine shoreline, this beautifully updated two-bedroom unit in "ETON LODGE" captures the essence of easy living, modern comfort, and low-maintenance coastal appeal.

Ideal for first-home buyers, downsizers or investors, this home blends fresh contemporary updates with relaxed easy living, perfectly situated a short stroll from the Esplanade, and nestled between The Broadway cafés at Glenelg South & cosmopolitan Jetty Road Brighton and within the prized Brighton Secondary School zone.

The Highlights:

- Quick walk straight down Eton Road to the golden sands of Somerton Park
- Perfectly positioned two-bedroom unit just moments from Somerton Park Beach
- Colonial-style facade framed by a white picket fence and manicured lawn

FOR SALE

Under Contract by Gerard Pacillo ph. 0431 596 145

AGENTS

Gerard Pacillo
0431 596 145
gerard@ljhfp.com.au

AGENCY

LJ Hooker Flinders Park
(08) 8352 1155

All information contained therein is gathered from relevant third parties sources. We cannot guarantee or give any warranty about the information provided. Interested parties must rely solely on their own enquiries.

LJ Hooker

- Light-filled open-plan living and dining area with picture windows and polished timber floors
- Stylish renovated kitchen featuring gas cooking, ample storage
- Two well-proportioned bedrooms, main with built-in robe
- Beautifully updated bathroom with terrazzo-look floors, brushed brass fittings and floor to ceiling tiles
- Separate modern laundry with built-in cabinetry and outdoor access
- Ducted reverse-cycle air conditioning for year-round comfort
- LED downlights, neutral tones and timeless design throughout
- Private rear courtyard with garden shed - ideal for relaxed outdoor entertaining or morning coffee
- Single undercover carport
- Zoned for Brighton Secondary School and Paringa Park Primary School
- Walking distance to Sacred Heart College, public transport and local cafés
- Just minutes from Jetty Road Glenelg, Marion Shopping Centre and much more

Location Insight:

Nestled in the heart of Somerton Park, this quiet coastal address places you within walking distance of the beach while remaining connected to the vibrant café, dining and retail hubs nearby. Renowned for its lifestyle and schooling, Somerton Park is one of Adelaide's premier seaside locations, offering the perfect balance of calm, convenience and coastal sophistication.

A stylish and move-in-ready home where modern ease meets seaside charm, the ideal coastal escape, ready to be enjoyed.

For more information contact:
Gerard Pacillo 0431 596 145
Ralph Pacillo 0433 117 801

To register your interest or to make an offer, click the link below:
<https://prop.ps//2tiFYgP8WMua>

Disclaimer:

This property is being sold without a price and therefore a price guide cannot be provided. The website may have filtered the property into a price bracket for website functionality purposes.

Whilst every effort has been made to ensure the accuracy of these particulars, no warranty is given by the vendor or the agent as to their accuracy. Interested parties should not rely on these particulars as representations of fact but must instead satisfy themselves by inspection or otherwise.

RLA 215339

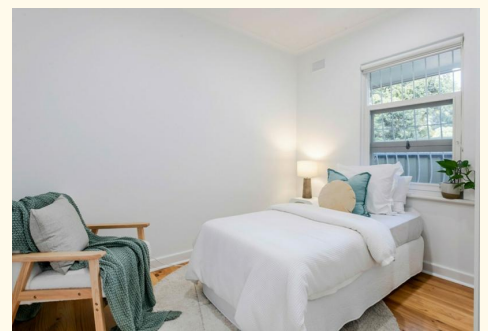
MORE DETAILS

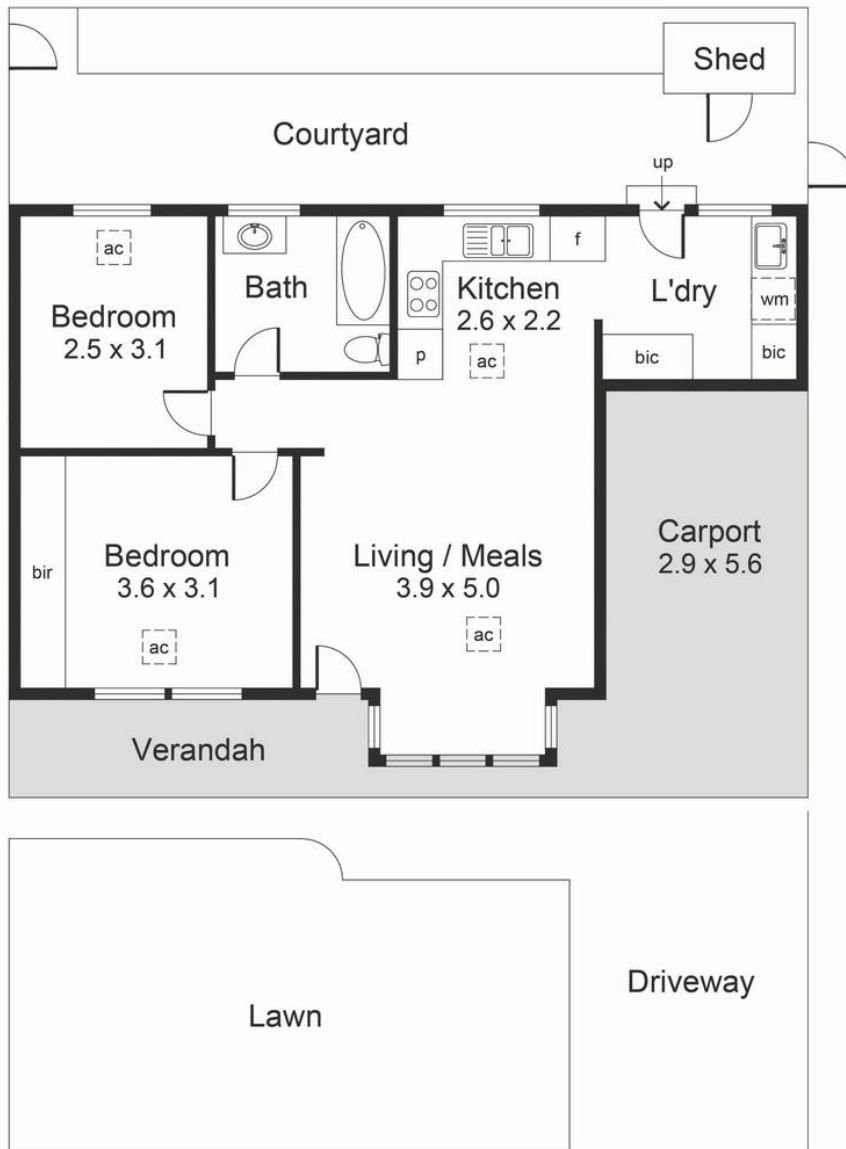
Property ID	JJEH67
Property Type	Unit
Including	Toilets (1)

Gerard Pacillo 0431 596 145
Property Consultant | gerard@ljhfp.com.au

LJ Hooker Flinders Park (08) 8352 1155
Suite 2/166-168 Grange Road, FLINDERS PARK SA 5025
flinderspark.ljhooker.com.au | flinderspark@ljhfp.com.au

All information contained therein is gathered from relevant third parties sources.
We cannot guarantee or give any warranty about the information provided.
Interested parties must rely solely on their own enquiries.





Area (Estimate only)	
Living	55.6 m ²
Carport / Verandah	24.6 m ²
Total	80.2 m²

For illustrative purposes only.
All measurements are approximate

