



## Snells Beach, 48 Tamatea Drive

### Simply Stunning But Needs Help

A perfect location absolutely beachfront on Snells Beach.

Room to store your dinghy, paddleboard and other toys. Walk straight out onto the beach and into the water.

A flat 1040m2 site, well planted, a great private courtyard.

The views are stunning but the 320m2 home built in 2001 has significant water damage.

The site is a very rare find, possibly subdivisible or build a luxurious home on this amazing site.

For sale by negotiation.



**For Sale**

By Negotiation

**View**

By Appointment

**Contact**

**Jennie Georgetti**

021 389 236

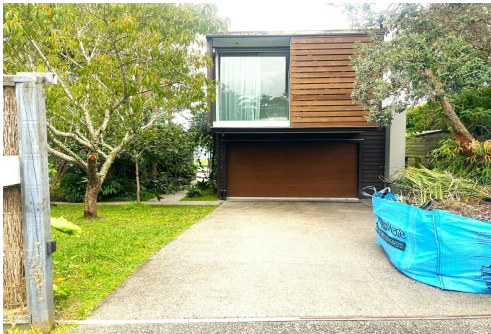
jennie.georgetti@ljhooker.co.nz

# More About this Property

|  |           |
|--|-----------|
| Property ID                            | F34HAY    |
| Property Type                          | Lifestyle |
| Land Area                              | 1040 m²   |
| Licensed Real Estate Agents (REAA2008) |           |

**Jennie Georgetti 021 389 236**  
Licensed Agent (REAA 2008) | [jennie.georgetti@ljhooker.co.nz](mailto:jennie.georgetti@ljhooker.co.nz)

**LJ Hooker Warkworth (09) 425 8589**  
Tulp & Co Limited  
20 Queen Street, WARKWORTH NZ  
[warkworth.ljhooker.co.nz](mailto:warkworth.ljhooker.co.nz) | [tulpandco@ljhooker.co.nz](mailto:tulpandco@ljhooker.co.nz)



**Disclaimer:** All information contained therein is gathered from relevant third parties sources.  
We cannot guarantee or give any warranty about the information provided. Interested parties must rely solely on their own enquiries.

**LJ Hooker Warkworth**  
**(09) 425 8589**  
Tulp & Co Limited