



Smithfield, 6 Rose Street

Spacious 851sqm Allotment with Room for All Your Toys and More!

Andrew Rose of LJ Hooker is proud to present this wonderful opportunity - a 3-bedroom, 1-bathroom home situated on a generous 851 sqm allotment (approx.) in the desirable area of Smithfield. With plenty of room to park a caravan, boat, or trailer, this property is perfect for those with an active lifestyle, hobby car enthusiasts, or anyone simply seeking extra outdoor space or storage.

Inside, you'll find an updated kitchen that blends modern style with functionality. Bedroom 1 is equipped with a built-in robe for added convenience, and the home also features both heating and cooling to ensure comfort all year round.

The large backyard is a standout feature, complete with an expansive pitched pergola - ideal for entertaining family and friends. The property is further enhanced by a variety of shaded areas, creating a cool and relaxing retreat throughout the day.



Disclaimer: All information contained therein is gathered from relevant third parties sources. We cannot guarantee or give any warranty about the information provided. Interested parties must rely solely on their own enquiries.



For Sale
UNDER CONTRACT BY ANDREW ROSE

View
ljhooker.com.au/66FHFDC

Contact
Andrew Rose
0421 988 597
andrew.rose@ljhces.com.au

LJ Hooker Craigmore | Elizabeth | Salisbury
(08) 8255 9555

Standout Features

- Large 851 Sqm Allotment (approx.)
- Close to Public Transport
- Heating and Cooling
- Space to park Caravan, Trailers or boat.
- Updated Kitchen

Specifications:

CT / 5125/578

Council / Playford

Built / 1985

Land / 851m2 (approx.)

Frontage / 18 metres (approx.)

Estimated rental assessment / \$480-\$500 per week.

Conveniently located near Munno Para Shopping City and Smithfield Train Station, offering easy access for those commuting to the city. The property is also close to the Smith Creek Walking Trail, with nearby schools including Blakeview Primary and John Hartley School.

This home offers both space and comfort, making it perfect for first-time buyers, those looking to downsize, or anyone wishing to enjoy a great lifestyle in Smithfield. Don't miss out on the opportunity to secure this fantastic property!

Disclaimer:

We have in preparing this document used our best endeavours to ensure the information contained is true and accurate, but accept no responsibility and disclaim all liability in respect to any errors, omissions, inaccuracies or misstatements contained. Prospective purchasers should make their own enquiries to verify the information contained in this document.

RLA155355

More About this Property

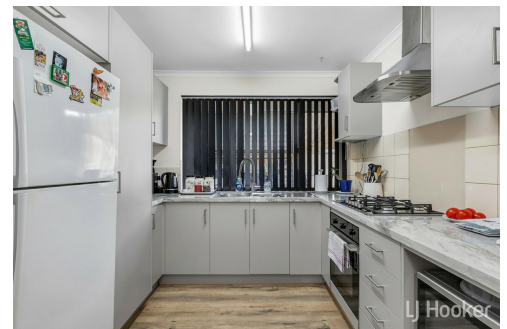
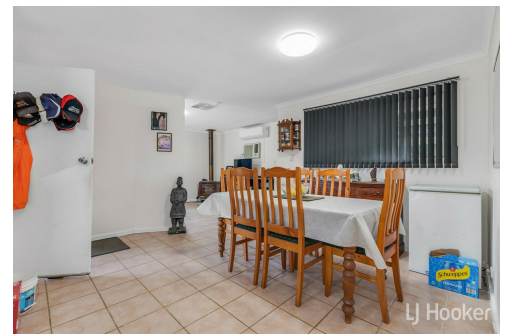
Property ID	66FHFDC
Property Type	House
Land Area	851 m2

Andrew Rose 0421 988 597

Senior Sales Representative | andrew.rose@ljhces.com.au

LJ Hooker Craigmore | Elizabeth | Salisbury (08) 8255 9555

Shop 17, Craigmore Village, Yorktown Road, CRAIGMORE SA 5114
craigmoreelizabeth.ljhooker.com.au | Office@ljhces.com.au



Disclaimer: All information contained therein is gathered from relevant third parties sources. We cannot guarantee or give any warranty about the information provided. Interested parties must rely solely on their own enquiries.

**LJ Hooker Craigmore | Elizabeth |
Salisbury
(08) 8255 9555**



6 Rose Street, Smithfield

DISCLAIMER: Floorplan and area calculation are approximate and for illustration purposes only.
Produced by **Property Portraits**

Interior	96m ²	341m²
Shed	21m ²	
Exterior	224m ²	
		TOTAL



**LJ Hooker Craigmore | Elizabeth |
Salisbury
(08) 8255 9555**

Disclaimer: All information contained therein is gathered from relevant third parties sources. We cannot guarantee or give any warranty about the information provided. Interested parties must rely solely on their own enquiries.