



Smithfield, 16 Lakeview Street

Highly sought-after Canopy's Edge Estate

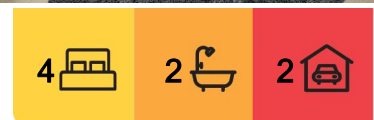
Nestled at the foothills of the Kuranda Range, this immaculate 2 year old property is being offered to the market for the first time. With a neutral decor, modern fixtures, and cool polished concrete floors throughout the living areas, this low-maintenance, move-in-ready home provides comfort and style. It also features air-conditioning and ceiling fans for added convenience.

Upon entering through the front entrance, you'll find free-flowing living spaces, including a spacious kitchen, lounge and dining area, and a media room that can also serve as a fifth bedroom.

The kitchen is a standout, offering soft-closing drawers, induction cooktop, and long island bench and a walk-in-pantry the full length of the kitchen! The kitchen island features an overhang, perfect for stools, and together with connected table is ideal for family gatherings or entertaining guests.



Disclaimer: All information contained therein is gathered from relevant third parties sources. We cannot guarantee or give any warranty about the information provided. Interested parties must rely solely on their own enquiries.



For Sale
\$929,000 Negotiable

View
By Appointment

Contact
Nadine Edwards
0423 602 606
nedwards@ljheh.com.au

Harriet Donnelly
0417 160 171
harriet@ljheh.com.au

LJ Hooker Cairns Edge Hill
(07) 4053 9999

Large windows and high ceilings create a light-filled atmosphere and enhance airflow throughout the home.

The generous lounge and dining areas(complete with study nook) seamlessly connects to a private, tiled patio that offers a peaceful, treed outlook and view of Cairns Wake Park, making it the perfect spot for entertaining or relaxing.

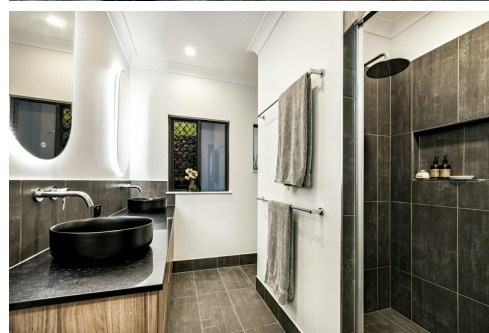
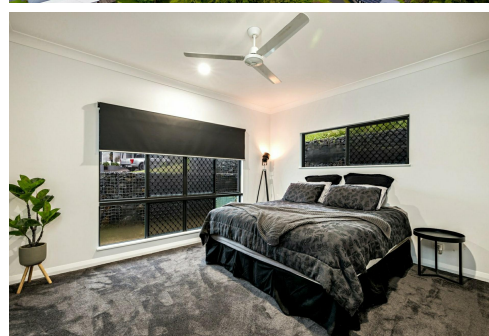
The main bedroom is generously sized and located away from the other bedrooms and equipped with walk-in-robe and ensuite.

The three other bedrooms are well-sized, each with a built-in wardrobe, and are conveniently located near the central bathroom with separate bathtub and shower.

Practical features include security screens, solar panels, internal laundry and off-street parking on the driveway.

The property offers a double garage with internal access into the home. There's also plenty of lush, green grass, ideal for children or pets to enjoy.

The low-maintenance tropical gardens, fresh breezes, and peaceful mountain backdrop add to the tranquillity, while the absence of rear neighbours due to Council Reserve ensures privacy. Smithfield Shopping Centre, and the stunning beaches are just a short drive away. This property is a perfect family home or a solid investment in a prime location.



More About this Property

Property ID	3WX2FMB
Property Type	House
Land Area	597 m ²
Including	Ensuite Air Conditioning Dishwasher Built-in-Robes Solar Panels Solar 11.3kW

Nadine Edwards 0423 602 606

Director | nedwards@ljheh.com.au

Harriet Donnelly 0417 160 171

Sales Associate to Nadine Edwards | harriet@ljheh.com.au

LJ Hooker Cairns Edge Hill (07) 4053 9999

81 - 83 Woodward Street, EDGE HILL QLD 4870

cairnsedgehill.ljhooker.com.au | cairnsedgehill@ljheh.com.au



Disclaimer: All information contained therein is gathered from relevant third parties sources. We cannot guarantee or give any warranty about the information provided. Interested parties must rely solely on their own enquiries.

LJ Hooker Cairns Edge Hill
(07) 4053 9999