

Smithfield Plains, 237 Peachey Road

Affordable 3-Bedroom Home —Ideal for First-Time Buyers or Investors!

Nestled in the growing suburb of Smithfield Plains, this 3-bedroom property offers a fantastic opportunity for first-time buyers, savvy investors, or those looking for a home to make their own. Practical and functional, this home is packed with features to meet your everyday needs while providing potential for future upgrades.

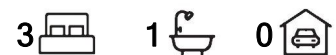
Key Features Include:

- Spacious Master Bedroom: Enjoy the comfort of a larger-than-average main bedroom with plenty of potential
- Updated Kitchen: A modernized space with all the essentials to make meal prep a breeze
- Timeless Wooden Floors: Easy to maintain and perfect for adding your own style
- Roller Shutters to the Front: Providing added security and privacy

Why You'll Want to Live Here:



Disclaimer: All information contained therein is gathered from relevant third parties sources. We cannot guarantee or give any warranty about the information provided. Interested parties must rely solely on their own enquiries.



For Sale
UNDER CONTRACT BY MARINA PATIYANTS

View
ljhooker.com.au/66G8FDC

Contact
Marina Ptiyants
0449 099 836
marina.ptiyants@ljhces.com.au

LJ Hooker Craigmore | Elizabeth | Salisbury
(08) 8255 9555

Set on a low-maintenance block, this home is close to everything you need. Schools, shopping centers, parks, and public transport are all within easy reach, making daily life simple and convenient. Whether you're looking to rent it out or settle in, the location ensures great lifestyle benefits for all.

Investment Potential:

With strong rental demand in the area, this property is ready to generate income. The straightforward layout and durable finishes make it a desirable option for tenants. Investors can enjoy peace of mind knowing they're purchasing a property in a sought-after suburb with potential for future growth.

Seize the Opportunity:

Affordable homes like this don't stay on the market for long. Take the first step toward your future.

Disclaimer:

We have in preparing this document used our best endeavours to ensure the information contained is true and accurate, but accept no responsibility and disclaim all liability in respect to any errors, omissions, inaccuracies or misstatements contained. Prospective purchasers should make their own enquiries to verify the information contained in this document.

RLA155355

More About this Property

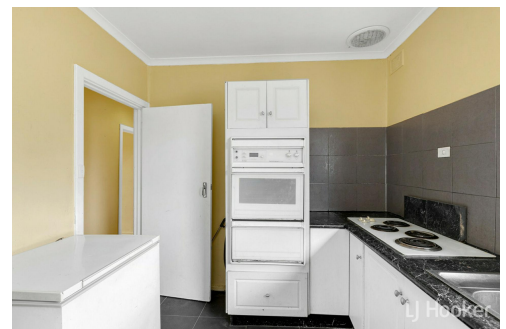
Property ID	66G8FDC
Property Type	House
House Size	106 m2
Land Area	675 m2

Marina Patiyants 0449 099 836

Sales Representative | marina.patiyants@ljhces.com.au

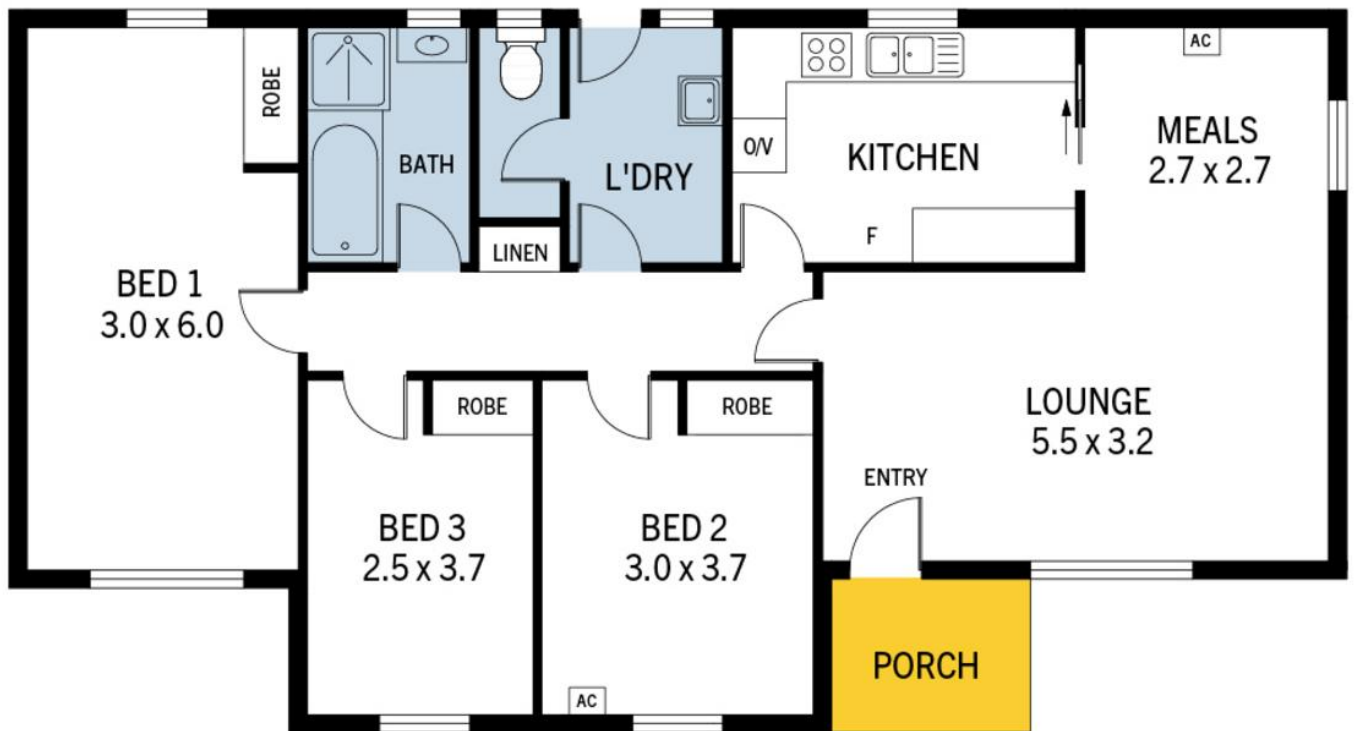
LJ Hooker Craigmore | Elizabeth | Salisbury (08) 8255 9555

Shop 17, Craigmore Village, Yorktown Road, CRAIGMORE SA 5114
craigmoreelizabeth.ljhooker.com.au | Office@ljhces.com.au



Disclaimer: All information contained therein is gathered from relevant third parties sources. We cannot guarantee or give any warranty about the information provided. Interested parties must rely solely on their own enquiries.

**LJ Hooker Craigmore | Elizabeth |
Salisbury
(08) 8255 9555**



237 Peachey Road, Smithfield Plains

DISCLAIMER: Floorplan and area calculation are approximate and for illustration purposes only.

Produced by **Property Portraits**

Interior
Porch

95m²
04m²

99m²
TOTAL