



2 Sussman Crescent, Smithfield

Neat & Tidy Family Home on a Large 701.9sqm in a Whisper Quiet Location

Perfectly positioned in a peaceful cul-de-sac on a generous 701.9sqm parcel of land, this neat and tidy 3-bedroom family home offers comfort, convenience, and exciting future potential.

Set in a family-friendly location, this well-maintained residence provides a practical floorplan with spacious living areas, a functional kitchen, and comfortable bedrooms, making it the perfect opportunity for first-home buyers, young families, or savvy investors.




The home offers plenty of potential for those looking to add value, with the possibility of a granny flat (subject to council approval), providing an excellent opportunity for future growth.

Enjoy the convenience of being close to local schools, shops, parks, transport options, and everyday amenities, while still enjoying the privacy and tranquillity of a quiet residential street.

Property Features:

- Three spacious bedrooms

All information contained therein is gathered from relevant third parties sources. We cannot guarantee or give any warranty about the information provided. Interested parties must rely solely on their own enquiries.

3  1  3 

AUCTION

Sat 11th Jul @ 12:00PM

VIEW

Sat 20th Jun @ 10:00AM - 10:30AM

AGENTS

Louie Kazzi
0450 771 000
louie.bl@ljhooker.com.au

Adriana Kazzi
0414 729 229
teamlouie.bl@ljhooker.com.au

AGENCY

LJ Hooker Bankstown
(02) 9708 2244



- Neat and tidy family home
- Whisper quiet cul-de-sac location
- Functional kitchen with ample storage
- Spacious living and dining areas
- Sunroom offering additional living space
- Lock-up garage plus covered carport
- Great backyard space
- Granny flat potential (S.T.C.A)
- Approx. 701.9sqm
- Ideal for families, first-home buyers, and investors

Offering a fantastic combination of location, comfort, and future potential, this is a wonderful opportunity to secure a home in a sought-after pocket of Smithfield.

DISCLAIMER: While LJ Hooker Bankstown Liverpool have taken all care in preparing this information and used their best endeavours to ensure that the information contained is true and accurate, we accept no responsibility and disclaim all liability in respect of any errors, inaccuracies, or misstatements contained herein. LJ Hooker Bankstown Liverpool urges prospective purchasers to make their own inquiries to verify the information contained herein.

MORE DETAILS

Property ID	11PAF8E
Property Type	House
Land Area	701.9 m2
Including	Built-in-Robes Secure Parking

Louie Kazzi 0450 771 000

Licensed Real Estate Agent | louie.bl@ljhooker.com.au

Adriana Kazzi 0414 729 229

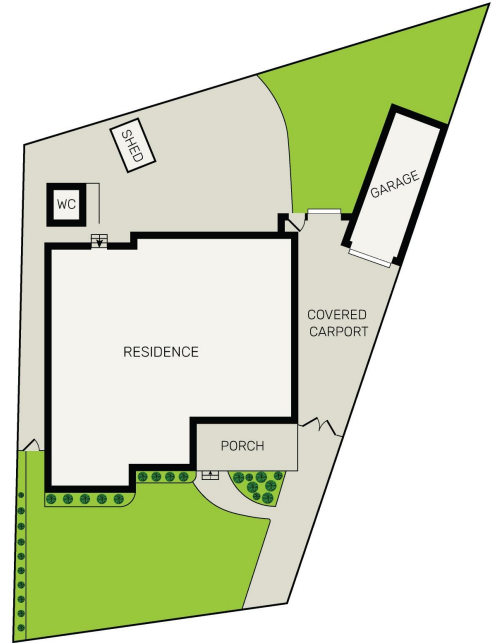
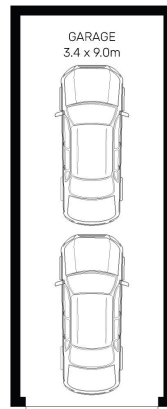
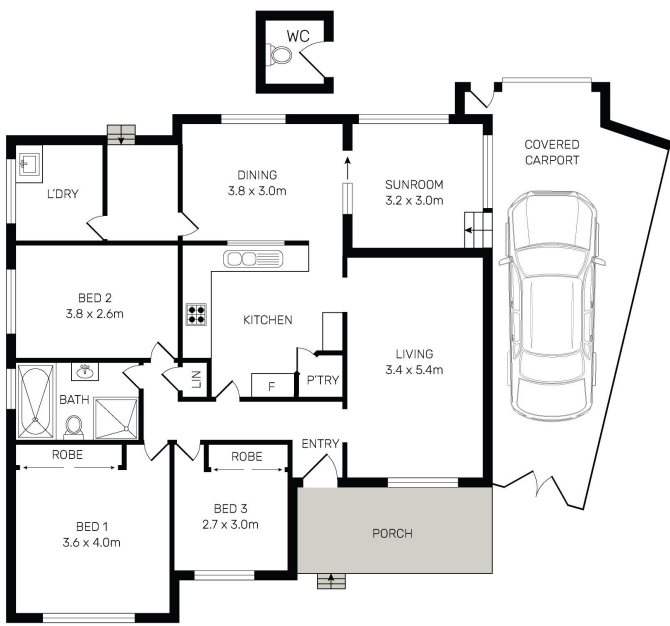
Sales Associate to Louie Kazzi | teamlouie.bl@ljhooker.com.au

LJ Hooker Bankstown (02) 9708 2244

11 Marion Street, BANKSTOWN NSW 2200

bankstown.ljhooker.com.au | bankstown@ljhooker.com.au





All information contained herein is gathered from all sources we believe to be reliable. However we cannot guarantee its accuracy and interested parties should rely on their own enquiries.



2 Sussman Crescent, Smithfield

All information contained therein is gathered from relevant third parties sources. We cannot guarantee or give any warranty about the information provided. Interested parties must rely solely on their own enquiries.