



Skye, 14 Van Haaster Grove

Spacious Family Home on a Generous 747m² Lot

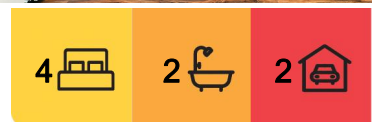
If you're seeking space inside and out, this property has you covered! Nestled in a quiet neighbourhood and conveniently close to primary and high schools, childcare facilities, and a host of other fantastic amenities, this immaculate home is perfect for a growing family.

Key Features:

- * There are 4 bedrooms, the master suite features a walk-in robe and ensuite, while the remaining bedrooms come with built-in robes.
- * Family bathroom is designed with comfort in mind.
- * Enjoy a formal lounge, a vast open-plan family room, and a meals area complete with a skylight and sliding doors leading to the backyard.
- * The heart of the home boasts an ultra-modern kitchen with large island bench, stainless steel appliances, and a dishwasher. It overlooks the family room, making it perfect for entertaining and everyday living.
- * Ducted heating and two split system air conditioners ensure year-round comfort.



Disclaimer: All information contained therein is gathered from relevant third parties sources. We cannot guarantee or give any warranty about the information provided. Interested parties must rely solely on their own enquiries.



For Sale
Please Call

View
ljhooker.com.au/1P83FC9

Contact
Sam Paynter
0439 429 110
spaynter.pakenham@ljhooker.com.au

LJ Hooker Pakenham
(03) 5943 8000

- * Double Garage features roller door access for convenience.
- * Outdoor courtyard is ideal for entertaining friends and family. The expansive 748m² lot provides ample lawn space for kids and pets to play. Double gate access on the side of the property offers easy conversion to trailer and caravan parking.

This is the ideal family home, offering space, comfort, and modern conveniences in a fantastic location. Don't miss the chance to make this your new home!

Please note: All property details listed were current at the time of publishing. Due to extreme buyer demand, some properties may have been sold in the preceding 24 hours. Therefore confirmation of all opens with the listing agent within 24 hours of their scheduled opening is advised.

More About this Property

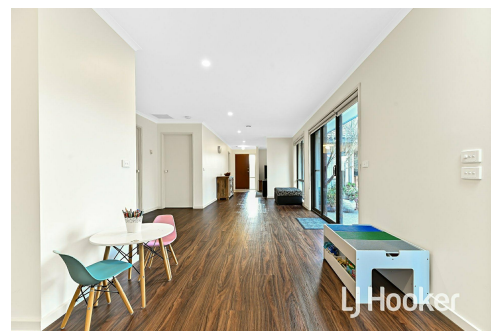
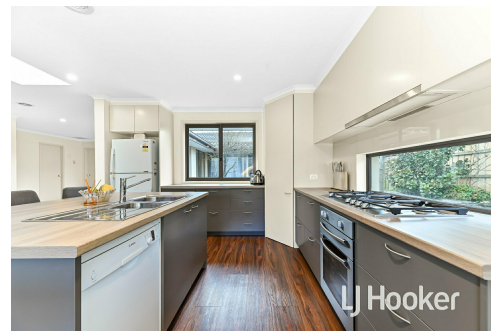
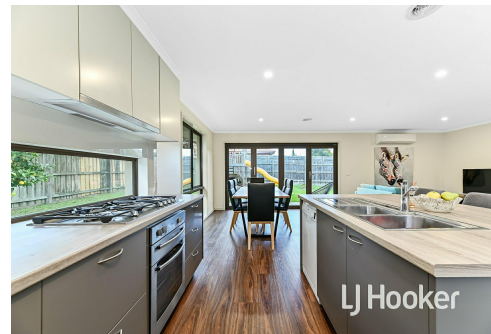
Property ID	1P83FC9
Property Type	House
Land Area	747 m ²
Including	Ensuite Air Conditioning Ducted Heating Deck Dishwasher Outdoor Entertaining Built-in-Robes Fully Fenced

Sam Paynter 0439 429 110

Partner | Sales Specialist | Licensed Estate Agent |
spaynter.pakenham@ljhooker.com.au

LJ Hooker Pakenham (03) 5943 8000

45 John Street, PAKENHAM VIC 3810
pakenham.ljhooker.com.au | pakenham@ljhooker.com.au



Disclaimer: All information contained therein is gathered from relevant third parties sources. We cannot guarantee or give any warranty about the information provided. Interested parties must rely solely on their own enquiries.

LJ Hooker Pakenham
(03) 5943 8000



This drawing is for illustrative purposes only and while every effort has been made to maintain accuracy, prospective purchasers should check all information