




Shiel Hill, 73 McKerrow Street

Prime Location - A Family Haven for Over 55 Years!

Auction Location: 63 Musselburgh Rise

Built for the current owners and now available for the first time in 55 years, this cherished family home is the perfect blend of comfort, convenience, and timeless appeal. Offering low-maintenance living with double-glazed windows, a wood burner and plenty of sun throughout the day, this home is warm & cosy and ideal for modern family life. Two inviting living areas seamlessly flow into one another, with the bonus of stunning coastal views. Three double bedrooms provide plenty of room for everyone, and the modern, light-filled kitchen features ample bench space and storage, making meal prep a breeze. Step outside to discover a secure backyard with raised garden beds and a glasshouse-perfect for green thumbs. The property also boasts fantastic garaging and workshop space, sure to be in high demand for those with hobbies or DIY projects. Located in a popular area known for its family-friendly atmosphere, excellent schools, and convenient bus services, this home will appeal to a wide range of buyers. Don't delay, my downsizing owner is

3 

1 

2 

For Sale
Auction

View
ljhooker.co.nz/3PQCGDS

Contact
Pam Mulder
027 454 3366
Pam@ljhdunedin.co.nz

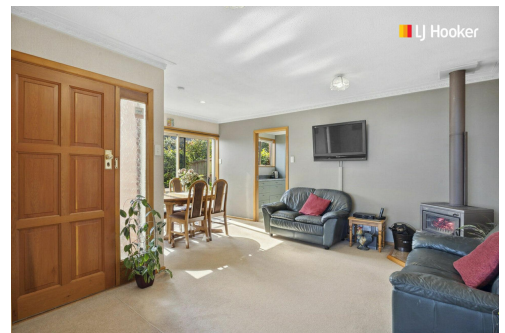
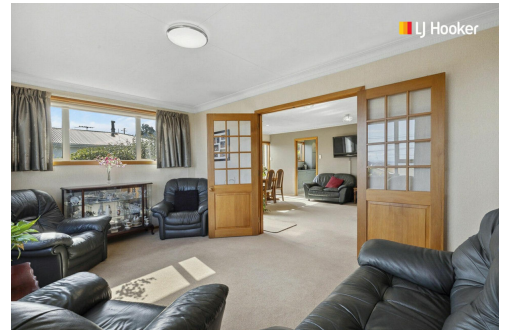
committed elsewhere.
Prior offers considered.

More About this Property

Property ID	3PQCGDS
Property Type	House
Land Area	554 m ²
Licensed Real Estate Agents (REAA2008)	

Pam Mulder 027 454 3366
Licensee/Auctioneer | Pam@ljhdunedin.co.nz

LJ Hooker Dunedin (03) 470 1370
Wayne Graham Realty Ltd
63 Musselburgh Rise, DUNEDIN 9013
dunedin.ljhooker.co.nz | dunedin@ljhdunedin.co.nz



Disclaimer: All information contained therein is gathered from relevant third parties sources.
We cannot guarantee or give any warranty about the information provided. Interested parties must rely solely on their own enquiries.

LJ Hooker Dunedin
(03) 470 1370
Wayne Graham Realty Ltd