




Shiel Hill, 6 Bone Street

Endless Possibilities

Elevated to capture sun and rural and sea views this cosy home offers ample space for those seeking a tranquil retreat. Positioned down a driveway on a generous 1722m² section with views to the coast this is not just a place to live but provides an opportunity for builders, renovators or as a potential subdivision for developers (subject to DCC approval). The expansive section with lawn and garden plots provides a canvas to make your own mark on the property. Featuring two double bedrooms, an updated kitchen, living room with heat pump and bathroom with combined shower, toilet and laundry area, off street parking and a carport. Close to schools, transport and amenities this property has endless possibilities and astute purchasers looking for a solid investment will be quick to see value here.

An Opportunity Not to Be Missed

2 

1 

3 

For Sale

Enquiries Over \$539,000

View

ljhooker.co.nz/3MSGGDS

Contact

Carol Dalton

021 774 000

carol@ljhdunedin.co.nz

More About this Property

Property ID	3MSGGDS
Property Type	House
Land Area	1722 m ²
Licensed Real Estate Agents (REAA2008)	

Carol Dalton 021 774 000

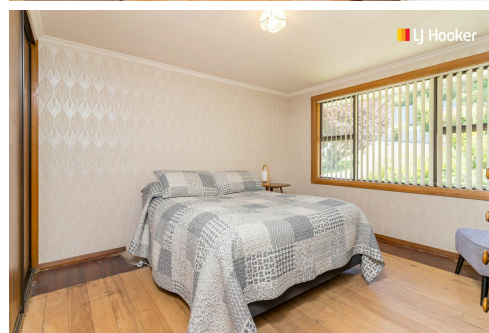
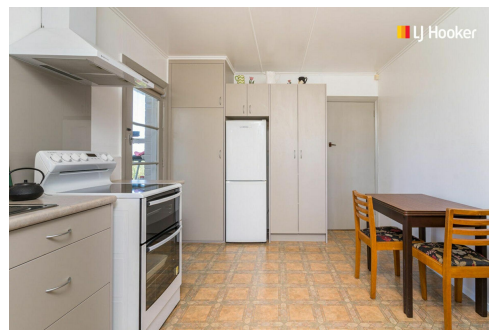
Licensee | carol@ljhdunedin.co.nz

LJ Hooker Dunedin (03) 470 1370

Wayne Graham Realty Ltd

63 Musselburgh Rise, DUNEDIN 9013

dunedin.ljhooker.co.nz | dunedin@ljhdunedin.co.nz



Disclaimer: All information contained therein is gathered from relevant third parties sources.
We cannot guarantee or give any warranty about the information provided. Interested parties must rely solely on their own enquiries.

LJ Hooker Dunedin
(03) 470 1370
Wayne Graham Realty Ltd