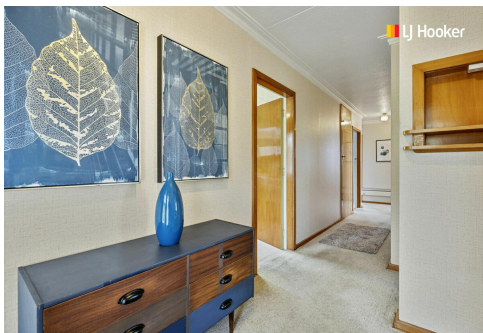


SOLD



Shiel Hill, 304 Highcliff Road

Ready & Waiting - Must be Sold!

Auction Location: 63 Musselburgh Rise

This home hasn't just stood the test of time but has been cherished every step of the way. 304 Highcliff Road is an immaculate 1950s brick home, sitting proudly on a sprawling 809m2 (+/-) that offers endless possibilities.

This home has been lovingly cared for by the same owner for 60 years. Half a century of dedication, pride, and meticulous maintenance. A property that's not just in original condition but feels like stepping back into a golden era of quality craftsmanship and enduring charm.

The light-filled living room welcomes you with its cosy ambiance and classic 1950s vibe. The original kitchen is solid, functional, and just waiting for someone to bring their own vision to life.

3 

1 

1 

For Sale
Auction

View
ljhooker.co.nz/3P3GGDS

Contact
Amelia Hermens
022 415 2359
amelia@ljhdunedin.co.nz
Geraldine Hermens
027 473 0922
Geraldine@ljhdunedin.co.nz

Three bedrooms branch off the central hallway, each offering its own slice of character. The bathroom, too, reflects the era, with its timeless design perfectly preserved. It's a blank canvas with a strong, solid foundation-a dream for renovators or those seeking a move-in-ready home.

Downstairs, you'll find a spacious basement garage that's more than just a place to park your car. It comes with a versatile utility or office space, perfect for working from home, a creative studio, or simply extra storage.

Step outside, and you're greeted by a large, beautifully maintained section, offering breathtaking vistas, that seems to stretch forever. Whether you envision lush gardens, a kids' playground, or future extensions, there's room for it all. Offering breathtaking vistas, where you can soak in the stunning surroundings from the comfort of your own backyard.

The location couldn't be better. Across the road is Rotary Park Kindergarten, making drop-offs a breeze. The home is also zoned for fantastic schools, ensuring your children have access to top-notch education. Shiel Hill's family-friendly reputation and easy access to amenities make it one of the most desirable areas to call home.

This is more than a house-it's a legacy waiting to be passed on. Offers will be considered prior to the auction.

More About this Property

Property ID	3P3GGDS
Property Type	House
Land Area	809 m ²
Licensed Real Estate Agents (REAA2008)	

Amelia Hermens 022 415 2359

Licensee | amelia@ljhdunedin.co.nz

Geraldine Hermens 027 473 0922

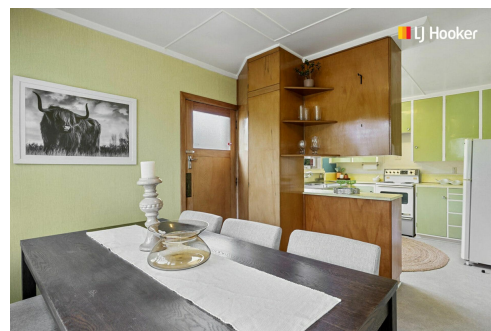
Licensee | Geraldine@ljhdunedin.co.nz

LJ Hooker Dunedin (03) 470 1370

Wayne Graham Realty Ltd

63 Musselburgh Rise, DUNEDIN 9013

dunedin.ljhooker.co.nz | dunedin@ljhdunedin.co.nz



Disclaimer: All information contained therein is gathered from relevant third parties sources. We cannot guarantee or give any warranty about the information provided. Interested parties must rely solely on their own enquiries.

LJ Hooker Dunedin
(03) 470 1370
Wayne Graham Realty Ltd