

1/34a Addison Street, Shellharbour

3 1 2

Fully renovated ! Just like a show home

This beautifully designed townhouse features that perfect blend of modern living with comfort and style. It has 3 spacious bedrooms, ideal for families or those looking for extra space. The master bedroom boasts a stunning oversized walk-in wardrobe, bedroom 2 comes equipped with built-in robes, ensuring ample storage for all your needs. The third bedroom is currently set up as a sophisticated home office.

The heart of the home is a bright and airy living area that flows seamlessly into a separate dining room, perfect for entertaining guests or enjoying family meals. The contemporary kitchen is a chef's delight, modern finishes, featuring a walk-in pantry and high-quality appliances, including a dishwasher.

This townhouse also offers a well-appointed bathroom and an additional under floor heating for the winter months for convenience. Enjoy year-round comfort with ducted cooling and reverse cycle air conditioning, ensuring a pleasant atmosphere regardless of the season. a full laundry with loads of storage to make sure nothing is left out...

FOR SALE
\$1,150,000

VIEW
By Appointment

AGENTS
Craig Hyde
0404 497 521
chyde.albionparkrail@ljhooker.com.au

AGENCY
LJ Hooker Albion Park Rail
(02) 4256 3344

All information contained therein is gathered from relevant third parties sources. We cannot guarantee or give any warranty about the information provided. Interested parties must rely solely on their own enquiries.

LJ Hooker

Step outside to discover your private outdoor oasis. The fully fenced courtyard is perfect for pets and offers a lovely garden space for relaxation or entertaining. The outdoor area is designed for easy maintenance, allowing you to spend more time enjoying your surroundings.

With secure parking for two vehicles in a remote garage and additional workshop space, this property caters to all your practical needs.

Located in a vibrant neighborhood, you'll enjoy breathtaking city views and easy access to local amenities, parks, and the stunning Shellharbour harbour & coastline.

Don't miss your chance to own this exceptional townhouse, listed at a guide price of \$1,150,000.

Experience the perfect blend of comfort, style, and convenience at 1/34a Addison Street, Shellharbour. Schedule your viewing today by calling the listing agent Craig Hyde on 0404497521.

MORE DETAILS

| | |
|---------------|---|
| Property ID | MW3G55 |
| Property Type | Townhouse |
| Land Area | 214 m2 |
| Including | Air Conditioning Ducted Cooling Ducted Heating Toilets (1) Alarm Courtyard Dishwasher Outdoor Entertaining Floorboards Workshop Built-in-Robes Secure Parking Fully Fenced Remote Garage Walk In Wardrobe Walk in pantry Stunning Workshop in the garage |

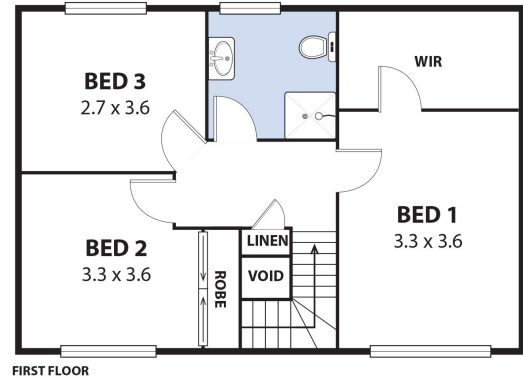
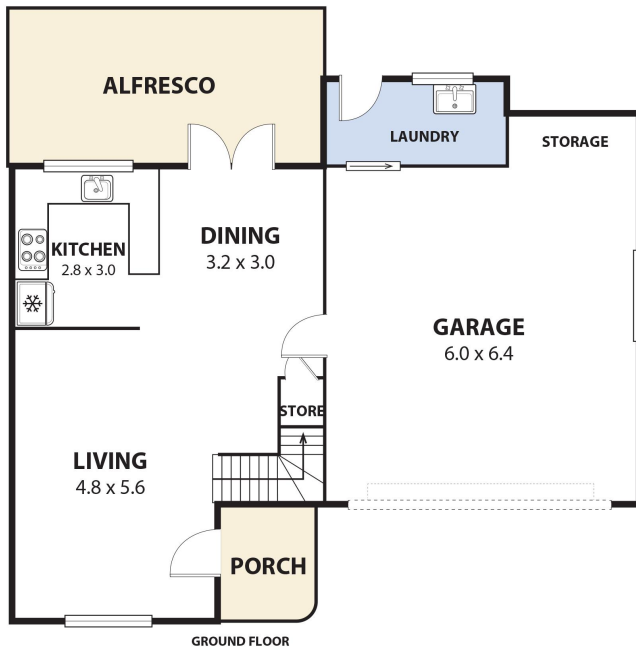
Craig Hyde 0404 497 521

Director/Area Specialist | chyde.albionparkrail@ljhooker.com.au

LJ Hooker Albion Park Rail (02) 4256 3344

195A Princes Highway, ALBION PARK RAIL NSW 2527
albionparkrail.ljhooker.com.au | albionparkrail@ljhooker.com.au





1/34A ADDISON ST, SHELLHARBOUR
Internal Space 157m²



Plans shown are for presentation purposes and are not part of any legal document or title and are subject to errors, omissions, inaccuracies and should not be used as sole and accurate reference. Particulars given are for general information only and do not constitute any representation on the part of the vendor or agent. No liability will be accepted.

Louka
wearelouka.com

All information contained therein is gathered from relevant third parties sources.
We cannot guarantee or give any warranty about the information provided.
Interested parties must rely solely on their own enquiries.

