



1/49-51 Mosaic Street East, Shelley




Renovated Riverside Villa in Rossmoyne Senior High School Zone

This is the perfect opportunity for those seeking a fully renovated home. Nestled in a quiet group of just 11 villas, this two-bedroom has been stylishly updated and offers a smart floor plan with effortless low-maintenance living, all in a central, riverside location.

Both the kitchen and bathroom have been beautifully renovated. The kitchen features a crisp subway tile splashback, generous benchtop space, abundant cupboard and drawer for storage. Whether you are a first home buyer, young family, or astute investor, this villa delivers space and style in equal measure.

Features & Benefits

- Neutral paint tones throughout
- Ceramic electric cooktop, fan-forced oven and rangehood
- Sleek floorboards to living and dining, carpets to bedrooms
- Two split-system air conditioners (living area and master bedroom)
- Single-door fridge recess in kitchen
- New vertical blinds installed throughout
- Spacious bathroom and laundry

2  1  1 

FOR SALE

Offers Over \$750,000 +

VIEW

Sat 13th Jun @ 1:00PM - 1:30PM

AGENTS

Kim Liew
0430 015 796
kim.liew@ljhvicpark.com.au

AGENCY

LJ Hooker Victoria Park | Belmont (WA)
(08) 9473 7777

All information contained therein is gathered from relevant third parties sources.
We cannot guarantee or give any warranty about the information provided.
Interested parties must rely solely on their own enquiries.

 **LJ Hooker**

- Private rear courtyard and garden
- Garden shed
- One carport plus visitor parking bays on site

Investor Information

This home is currently tenanted on a fixed lease at \$560 per week to 14 March 2027.

Rates & Strata Levies

- Council Rates: \$1,883.33 FY25/26
- Water Rates: \$1,018.14 FY25/26
- Strata Admin Levy: \$534.09 per quarter
- Strata Reserve Levy: \$243.18 per quarter

Location

Set in the sought-after suburb of Shelley, this villa offers an enviable blend of lifestyle and convenience. Surrounded by lush open spaces and the Canning River, it's a haven for low-maintenance, riverside living.

Zoned for both Rossmoyne Senior High School and Shelley Primary School, the home is moments from Riverton Forum, Rossmoyne IGA, and the popular Tribute Street café. Beautiful parklands and scenic riverside trails are right on your doorstep, while water lovers will relish easy access to kayaking, sailing, and the Shelley Sailing Club.

Contact

Represented by Kim Liew. To book your viewing, contact Kim directly or text "1/49-51 Mosaic Street East" to 0430 015 796 for further information.

MORE DETAILS

Property ID	5GWZFFB
Property Type	Villa
House Size	62 m2
Land Area	146 m2
Including	Air Conditioning Courtyard Floorboards Carpeted Close to Schools Close to Shops Close to Transport Window Treatments

Kim Liew 0430 015 796

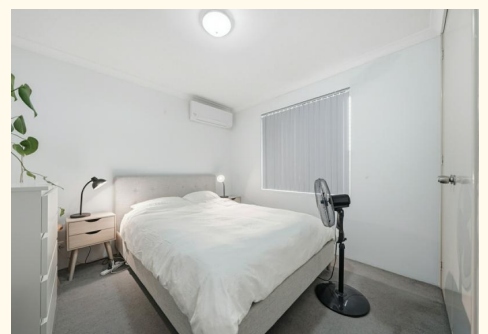
Sales Consultant | kim.liew@ljhvicpark.com.au

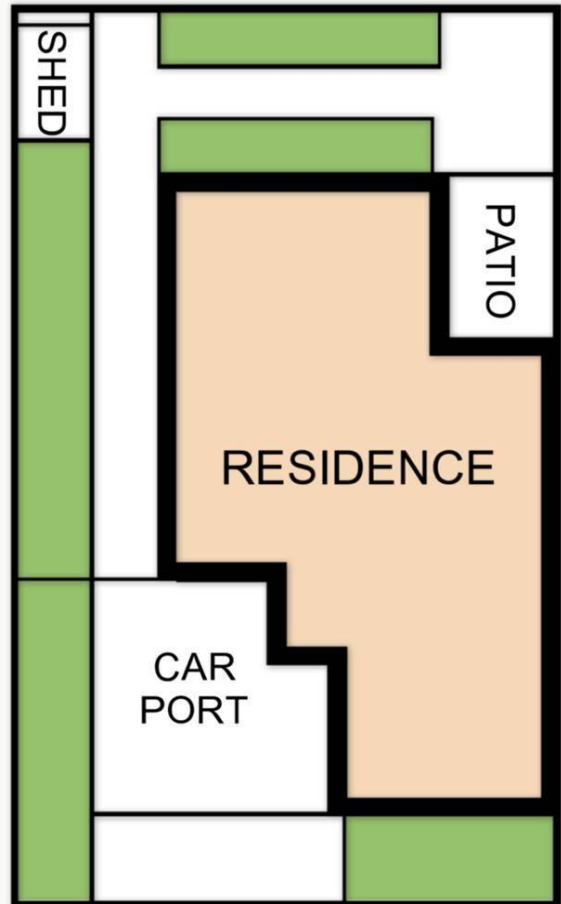
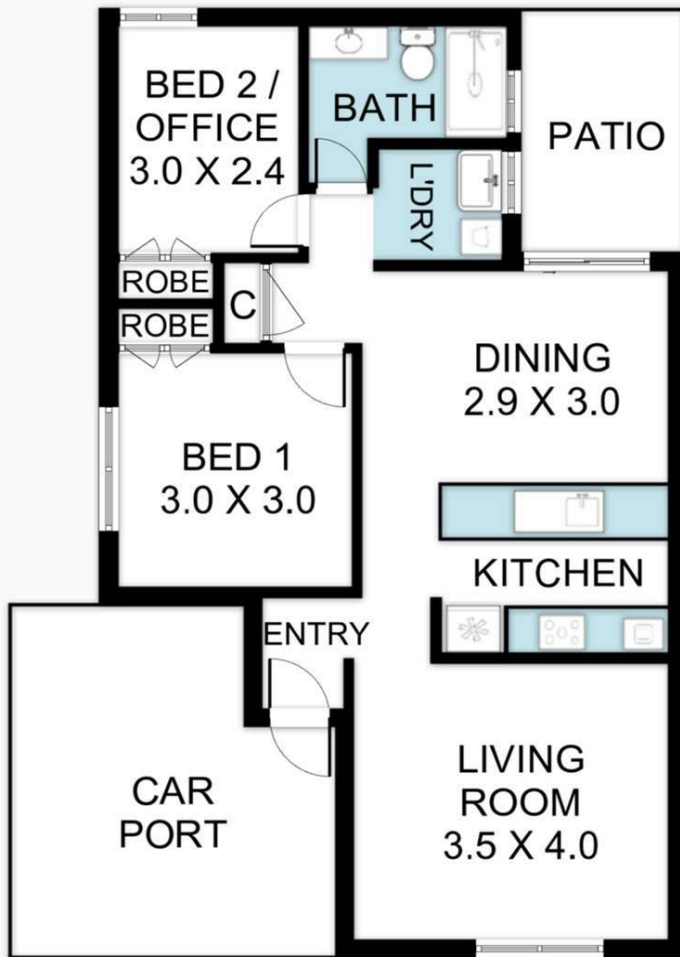
LJ Hooker Victoria Park | Belmont (WA) (08) 9473 7777

288 Albany Highway, VICTORIA PARK WA 6100

victoriapark-belmontwa.ljhooker.com.au |

reception@ljhvicpark.com.au





49 Mosaic St E, Shelley WA 6148

Whilst every attempt has been made to ensure the accuracy of the floor plan contained here in measurements of doors Windows rooms and any other items are approximate and no responsibility is taken for any error omission or misstatement . This plan is for illustrative purposes only and should be used as such by any prospective purchaser.