


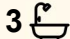
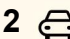
12 Lateen Close, Shell Cove

## Modern Coastal Locale

This boutique Torrens Title townhome presents an excellent environment for a luxury low maintenance lifestyle, boasting spacious interiors, quality finishes and functional layouts that maximise space and enhance indoor and outdoor living. Perfectly positioned, you'll enjoy the convenience and proximity to the vibrant Shell Cove Marina precinct, scenic Killalea State Park and Shellharbour Village, along with stunning beaches, popular cafés and restaurants, boutique shopping, schools and public transport.

### Features

- Contemporary design offering generous open plan living and dining spaces
- Sleek kitchen with stone benches, gas cooking and breakfast bench
- Seamless flow to outdoor entertaining with large undercover alfresco and level yard
- Stylish modern bathrooms and internal laundry with built in robe
- Guest-friendly layout with bedroom and bathroom on the lower level
- Upper-level retreat providing a second living space with balcony
- Master bedroom includes ensuite, walk in robe and balcony
- Additional bedrooms all with built in robes
- Double garage offering easy internal access
- The perfect property for those looking to invest or purchase their

4  3  2 

### FOR SALE

\$1,250,000 - \$1,300,000

### VIEW

By Appointment

### AGENTS

Martin Merritt  
0412 424 226  
martin.merritt@ljhwoollongong.com.au

### AGENCY

LJ Hooker Wollongong | Corrimal |  
Shellharbour  
(02) 4229 8600

All information contained therein is gathered from relevant third parties sources.  
We cannot guarantee or give any warranty about the information provided.  
Interested parties must rely solely on their own enquiries.



first home

- Everything at your fingertips in this convenient lifestyle setting
- Live the Shellharbour City lifestyle, conveniently 25 minutes to Wollongong CBD and 1.5 hours from Sydney CBD
- Images have been virtually staged for illustration and may not reflect the property's current condition.

## MORE DETAILS

Property ID	W0FHQZ
Property Type	House
House Size	146 m2
Land Area	268.6 m2
Including	Study Air Conditioning Courtyard Balcony Dishwasher Built-in-Robes Secure Parking Fully Fenced Remote Garage Water Tank Carpeted

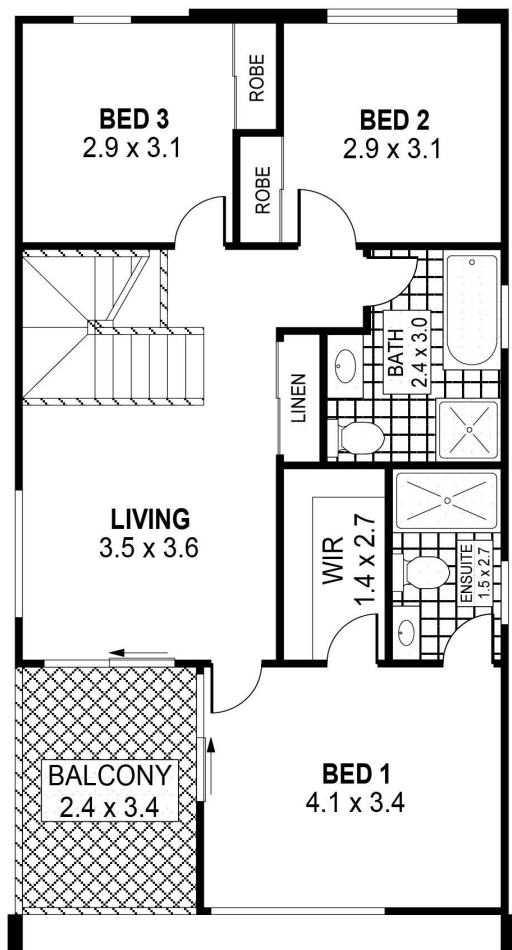
### Martin Merritt 0412 424 226

Principal | Licenced Real Estate Agent |  
martin.merritt@ljhwollongong.com.au

### LJ Hooker Wollongong | Corrimal | Shellharbour (02) 4229 8600

69 Kembla Street, WOLLONGONG NSW 2500  
wollongong.ljhooker.com.au | wollongong@ljhooker.com.au

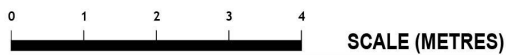




FIRST FLOOR



GROUND FLOOR



PLANS SHOWN ONLY INDICATIVE OF LAYOUT. DIMENSIONS ARE APPROXIMATE.  
Ref. No: 010709



INT : 146m<sup>2</sup>  
EXT : 36m<sup>2</sup>  
GARAGE : 32m<sup>2</sup>

12 LATEEN CLOSE

SHELL COVE