

Sheldon, 49 – 59 Hillcrest Road

Looking Forward to meeting New the Owners
Tomorrow !!- We Are Selling!

"Come Home to the Peace & Quiet of your rural Retreat !"

Private Inspections – Week Days & Sunday by Appointment Only

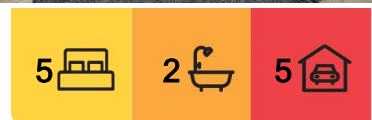
PLEASE READ ALL THE PROPERTY STORY, LOTS OF IMPORTANT INFORMATION

Large Block: 1.1ha – 2.74 m2 – 626 m2 Building – Under Roof

Designed with its environment in mind and brought to life by the award-winning builders, Fox & Bell, this masterpiece seamlessly blends modern design with the natural landscape that surrounds it.



Disclaimer: All information contained therein is gathered from relevant third parties sources. We cannot guarantee or give any warranty about the information provided. Interested parties must rely solely on their own enquiries.



For Sale

Contact Sales Agent

View

ljhooker.com.au/2MMTF3E

Contact

Chris Ryan

0415 850 767

chris@ljhbroadwater.com.au

LJ Hooker Broadwater
(07) 5537 1311

As you approach the property, a commanding entrance beckons you inside, setting the stage for the wonders that await. The wide corridors, carefully crafted to guide potential home buyers towards the heart of the home, a vast living room adorned with 3.2m ceilings. Here, the gentle breezes flow freely, through a multitude of plantation shutters.

The very recently renovated kitchen is a culinary oasis where modern appliances seamlessly merge with style and functionality. The separate dining area, with its welcoming ambiance and commanding views of the is a perfect spot for a leisurely breakfast or an intimate dinner.

Master suite offering endless privacy with scenic views, Tasmanian oak floors, very spacious walk-in robe, air-conditioning and stylish ensuite with imported Italian basins.

Second bedroom converted from two bedrooms to one, with dual built-in robes and the option to switch back into two separate rooms.

Third bedroom with built-in robe, air-conditioning, and relaxing views.

Luxurious family bathroom featuring an imported Italian bath, shutters, and seating.

Forth Bedroom downstairs is a charming private haven away from the rest of house which has recently had a makeover.

Private home office nook located just near the entrance and close to everything going on.

Security system, air-conditioning, lots of external lighting installed since major landscaping works.

The heated internal swimming pool with large skylight and natural light, overlooking the expansive natural landscape, the room perfect for that home gym or office space.

Continuing the journey, the transition from the interior to the great outdoors is flawlessly executed, creating a harmonious flow between the two realms.

Stepping through the open doors, a seamless connection with the surrounding land is revealed.

Outside an expansive entertainers' elevated pavilion awaits, offering panoramic views that sweep across the tranquil trees. This outdoor haven, bathed in natural splendour, becomes the perfect setting for family gatherings and special celebrations. A dedicated firepit area entices you to cozy evenings spent under the starlit sky. The crackling flames providing warmth and comfort, creating an intimate ambiance where stories can be shared, and cherished memories can be forged.

A sense of adventure and whimsy awaited the youngest residents, as a custom-made children's cubbyhouse nestled among the lush greenery. This charming retreat serves as a canvas for limitless imagination and endless hours of play.

In the natural gardens, beehives harmoniously coexist with the landscape, a testament to the property's commitment to sustainability and the preservation of



LJ Hooker Broadwater
(07) 5537 1311

Disclaimer: All information contained therein is gathered from relevant third parties sources. We cannot guarantee or give any warranty about the information provided. Interested parties must rely solely on their own enquiries.

local ecosystems.

Lower floor garage with accommodation for 4+ vehicles plus several off-street parking.

Beyond the confines of the property, the vast surrounding land embraced residents with its awe-inspiring beauty. The lush greenery extended as far as the eye could see, creating a sanctuary of tranquility and natural wonder.

This remarkable property is more than just a house, it is a sanctuary where modern design harmoniously coexists with the rugged beauty of the surrounding landscape. It is a testament to the craftsmanship of builders, Fox & Bell. Within these walls, a comfortable yet luxurious lifestyle awaits. It a place where one could savour the simple pleasures of life, a gentle breeze, the melody of birdsong welcoming each new day.

Only metres from walking trails and featuring a running creek in the wet season, this idyllic hideaway offers peace and privacy only 30 minutes to the CBD, approximately one hour in both directions to the Gold & Sunshine coasts.

Please contact Chris Ryan the Sales & Marketing Consultant, for more information regarding the property, times for private viewing and open for inspection times - 0415 850 767.

Check out the video link below for a virtual tour of the property.

Additional features & important information:

Property Built: 1992.

Redland City Council Water levy: \$509.57 3mths.

Redland City Council Rates levy: \$470.25 3mths.

Spacious 5 bedroom property on 2.74 Acres, "built like nothing you have seen before!"

Unique indoor heated swimming pool.

Offering the utmost privacy on 1.1ha of local scenic bushland.

Renovated Kitchen, powder room & laundry.

Featured kitchen appliances, dual ovens, granite benchtops.

Freshly painted internal & externally within the last few years.

New marine carpet installed to pool deck area: August 2023.

New Timber window shutters installed throughout the property.

Hand blown glass Chandelier in Lounge: \$9000.

Landscape & design completed in the past 18mths @ cost of \$70k plus.

Quality imported bathroom fitting & tapware installed.

Free standing bath imported from Italy - \$35,000 main bathroom.

European tapware & sinks imported \$20,000 ensuite.

Solar system: powered by approximately 40 panels & 13.5 kw inverter.

Ducted Air Conditioning throughout the property.

New slim line ceiling fans installed in all bedrooms.

Gas fireplace in lounge room / feature glass block wall brings outdoors inside.

Tasmanian Oak timber floors used within this home are just beautiful.

New stone benchtops to home office desk & lounge buffet.

New Smoke Alarms installed to meet new compliance legislation.

Current: 2023 Compliance pool fence /safety certificate.



LJ Hooker Broadwater
(07) 5537 1311

Disclaimer: All information contained therein is gathered from relevant third parties sources. We cannot guarantee or give any warranty about the information provided. Interested parties must rely solely on their own enquiries.

Development Zone : Conservation

Places of interest in the local Redland Bay region:

- Sheldon College within 10 mins drive
- Faith Lutheran Collage: Redlands
- Redlands Sporting Club; Wellington Point
- Sheldon Shopping Centre within 10mins drive
- Bayview Conservation Park 10km away
- Sirromet Winery /Restaurant and live Music Venue 15mins away
- Australian School of the Arts (ASTA) 10mins away
- Redland Bay 18 mins away / Wellington Point 13.4 km
- Major Shopping Centres & Number of Sporting clubs close to the local area.

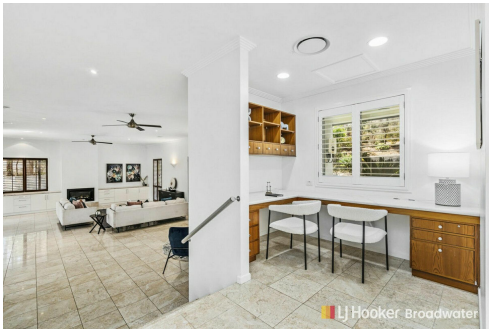
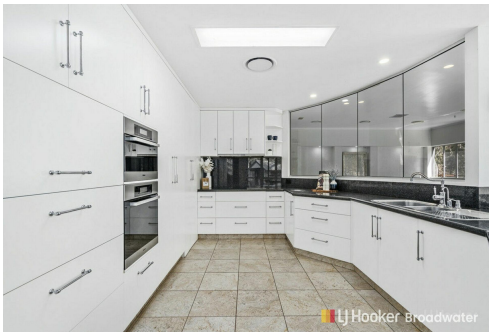
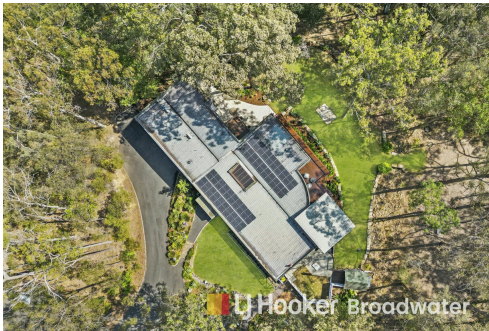
Disclaimer: All information contained herewith, including but not limited to the general property description, images, floorplans, figures, price and address, has been provided to Alberport PTY LTD trading as LJ Hooker Broadwater by third parties. We have obtained this information from sources that we believe to be reliable; however, we cannot guarantee the accuracy and or completeness of this information. The information contained herewith should not be relied upon as being true and correct. You should make independent inquiries and seek your own independent advice.

More About this Property

| | |
|---------------|-------------|
| Property ID | 2MMTF3E |
| Property Type | House |
| House Size | 627 hectare |
| Land Area | 1.1 hectare |
| Including | Toilets (3) |

Chris Ryan
Sales & Marketing Consultant | chris@ljhbroadwater.com.au

LJ Hooker Broadwater (07) 5537 1311
64 Frank Street, LABRADOR QLD 4215
broadwater.ljhooker.com.au | accounts@ljhbroadwater.com.au



Disclaimer: All information contained therein is gathered from relevant third parties sources. We cannot guarantee or give any warranty about the information provided. Interested parties must rely solely on their own enquiries.

LJ Hooker Broadwater
(07) 5537 1311



49 - 59 Hillcrest Road, Sheldon

Internal: 517m² | External: 109m² | Total: 626m²

Plans shown are only indicative of layout. Dimensions are approximate.

LJ Hooker **LJ Hooker**