

## Shailer Park, 5/7 Maranda Street

Discover Tranquillity with Ultimate Convenience!

Nestled in a peaceful setting, yet just a short stroll to the Logan Hyperdome, local schools, cafes, public transport, and all the amenities you could need, this townhouse offers an opportunity you won't want to miss!

The property is in excellent condition inside and out, bathed in natural light. A unique high window upstairs brightens a normally shaded space, making the home feel even more welcoming.

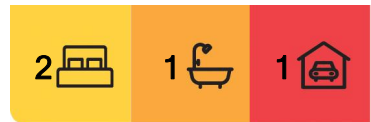
Located just minutes on foot from the Hyperdome, this charming townhouse is part of a small complex with low body corporate fees. With generous proportions and a warm, inviting atmosphere, it's perfect for those looking to downsize, secure their first home, or find a private retreat.

Features:



**Disclaimer:** All information contained therein is gathered from relevant third parties sources.

We cannot guarantee or give any warranty about the information provided. Interested parties must rely solely on their own enquiries.



**For Sale**

Interest over \$499,000

**View**

[ljhooker.com.au/619HVG](http://ljhooker.com.au/619HVG)

**Contact**

**Neil Cowan**

0432 468 439

[ncowan.shailerpark@ljhooker.com.au](mailto:ncowan.shailerpark@ljhooker.com.au)

**Ani Jones**

0407771997

[ani.jones@ljhooker.com.au](mailto:ani.jones@ljhooker.com.au)

**LJ Hooker Shailer Park**  
**(07) 3102 0829**

- One oversized bedroom and an additional bedroom, both with ceiling fans and built-in wardrobes
- Spacious, open-plan living area
- Laundry and second toilet conveniently located downstairs
- Large courtyard, ideal for relaxing or entertaining
- Single lock-up carport
- Well-appointed kitchen with plenty of cupboard space and a freestanding oven
- Body Corporate fees: \$2300 annually with 10% discount if paid on time
- Current rental appraisal: \$480 per week
- Available with vacant possession
- Feel free to get in touch anytime for more information.
- Corner Unit

**Location Highlights:**

Walking distance to Logan Hyperdome (one of Queensland's largest shopping destinations)

Walking distance to Brisbane busway (a major public transport hub)

Walking distance to health and medical facilities

Easy access to the motorway

5 minutes to Chisholm College

10 minutes to Calvary Christian College

10 minutes to John Paul College

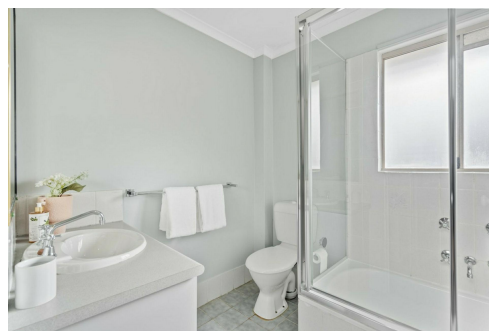
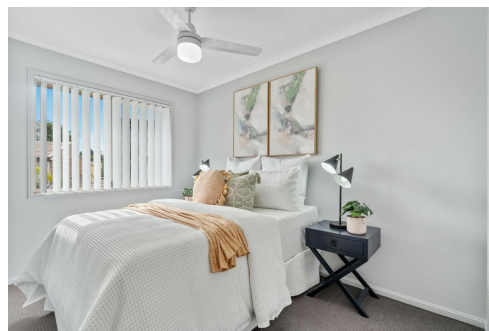
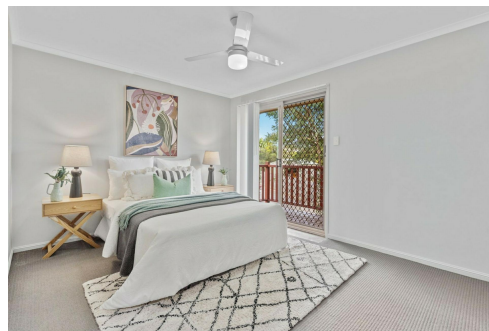
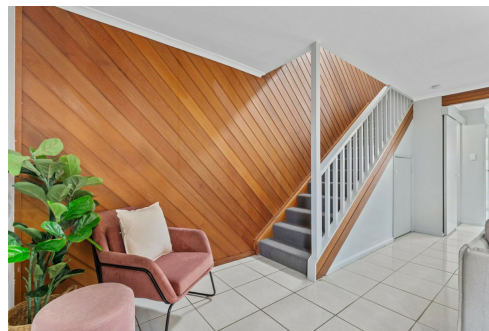
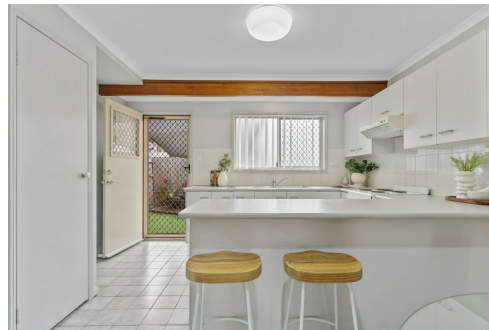
10 minutes to Sirromet winery

20 minutes to Movie World, Wet'n'Wild, & Dreamworld

30 minutes to Brisbane Airport

30 minutes to Brisbane

30 minutes to the Gold Coast



## More About this Property

<b>Property ID</b>	619HVG
<b>Property Type</b>	Townhouse
<b>Land Area</b>	121 m <sup>2</sup>

**Neil Cowan 0432 468 439**

Licensee | [ncowan.shailerpark@ljhooker.com.au](mailto:ncowan.shailerpark@ljhooker.com.au)

**Ani Jones 0407771997**

Sales Agent | [ani.jones@ljhooker.com.au](mailto:ani.jones@ljhooker.com.au)

**LJ Hooker Shailer Park (07) 3102 0829**

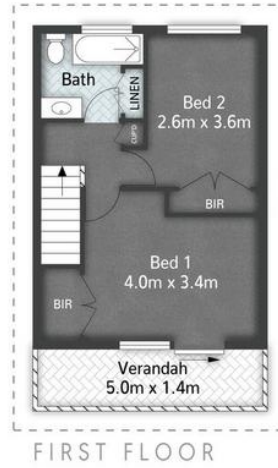
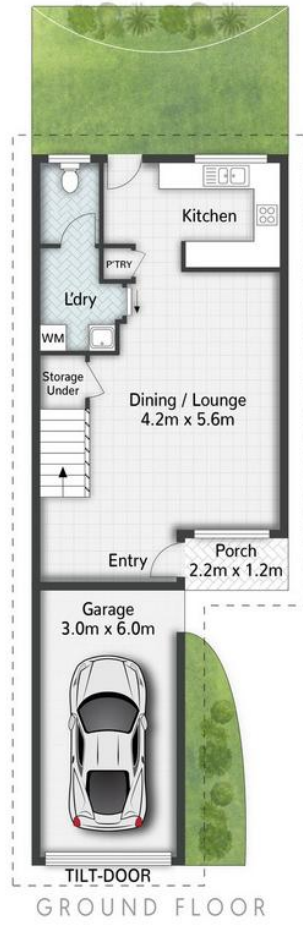
2/3 Mandew Street, SHAILER PARK QLD 4128

[shailerpark.ljhooker.com.au](http://shailerpark.ljhooker.com.au) | [shailerpark@ljhooker.com.au](mailto:shailerpark@ljhooker.com.au)



**LJ Hooker Shailer Park  
(07) 3102 0829**

**Disclaimer:** All information contained therein is gathered from relevant third parties sources. We cannot guarantee or give any warranty about the information provided. Interested parties must rely solely on their own enquiries.



5/7 Maranda Street SHAILER PARK

2 | 1 | 1 | 120m<sup>2</sup>



All dimensions are approximate; they are subject to errors and inaccuracies and no liability will be accepted. Plans are shown for marketing purposes only.



LJ Hooker Shailer Park  
(07) 3102 0829

**Disclaimer:** All information contained therein is gathered from relevant third parties sources. We cannot guarantee or give any warranty about the information provided. Interested parties must rely solely on their own enquiries.