



19 Paraburdoo Crescent, Shailer Park

Private Oasis in Prime Location - Quiet & Tranquil Setting

Nestled in a prestigious and highly sought-after neighbourhood is this executive residence that offers a well-balanced combination of space, natural light and elevated to receive continuous breezes and picturesque outlook from most aspects of the home.

Designed for easy living, the open-plan layout connects the kitchen, living and dining areas seamlessly to a large, fully covered entertainment area that will wow the most discerning guests.

All set amidst Foxtail trees on a 1270m² allotment and positioned at the end of the street is a Bus service, playground and within a short stroll to two dog parks which accommodates all dog sizes.

Boasting a renovated kitchen and two renovated bathrooms, new carpet in one of the bedrooms, the rest of the home has beautiful timber floors.

A dedicated paved Caravan Bay and new 6-foot fencing providing extra privacy. The roof has been restored in 2020.

Double gate access to the left-hand side, offering full access to the

4  2  2 

FOR SALE
Contact Agent

VIEW
Sat 9th May @ 11:00AM - 11:30AM

AGENTS
Melinda Lee-Ball
0415 520 748
melinda.leeball@ljhooker.com.au

Luisa Sargent
0439 599 080
luisa.sargent@ljhooker.com.au

AGENCY
LJ Hooker Shailer Park
(07) 3102 0829

All information contained therein is gathered from relevant third parties sources.
We cannot guarantee or give any warranty about the information provided.
Interested parties must rely solely on their own enquiries.

 **LJ Hooker**

backyard, a paved area for a box trailer, plus double gates to the right hand side that is also paved and two garden sheds, a 2m x 2m and a 3m x 3m with power.

Outside offers an oasis for entertaining and relaxing. The massive, covered entertainment delivers that 'wow' factor with glorious views and a leafy backdrop. You will forget that you are living in suburbia as you bask in tranquillity providing a majestic lifestyle.

There is an established veggie garden which is at the perfect height for picking your herbs for dinner. A low maintenance yard with ample space for the children and pets to play securely and ample space to add a pool if one desires in the future.

Underneath the house is two handy lockable sections, one ideal for your ladder and mower and one that is ideal for storage or a workshop as it's on a concrete slab and has power.

Step inside and be greeted by cathedral ceilings in the open plan lounge and dining room, which is designed for modern family living, the home offers a versatile layout with multiple living zones.

The renovated kitchen is both practical and well-appointed featuring a sky light, an integrated bin, soft close cabinetry, glass splash back, pull out mixer, 11.4kw air-conditioner, rangehood, Bosch dishwasher, under mounted sink, extra storage cupboard under the breakfast bar, large drawers and a generous pantry. It integrates naturally with the living space, supporting both everyday use and entertaining.

Cathedral ceilings in the spacious family room which could accommodate another dining table and offers seamless indoor/outdoor connectivity.

Four spacious bedrooms all with built-ins and three with air-conditioning. To the rear of the home is a retreat like and air-conditioned master suite with its own private deck, where you can enjoy your morning beverage in complete serenity. A customised walk-in robe, a newly renovated modern grey and white ensuite with a mirror and built-in lights, exhaust fan, two shower roses, storage niche and large vanity.

The modern renovated main bathroom features striking floor tiles, a one metre shower with niche, free standing vanity, separate bathtub, mirror with lights and a separate new toilet.

There is a spacious internal laundry offering lots of cupboards and bench space.

There is a heat pump on the hot water system, flood lights left hand side and many more features to discover at the open home.

Shailer Park offers every convenience within minutes. Minutes away from Koolan Park, Venman National Forest and Daisy Hill National Forest for those who enjoy bush walking or mountain bike riding. Minutes from a bus service. Within close proximity to John Paul College, St Matthew's Primary School and Chisholm Catholic College. Just around the corner and within walking distance to the Hyperdome Shopping Centre and bus exchange. Easy M1 access to Brisbane CBD, Gold Coast and the Brisbane airport.

Situated in one of the most desirable locations in Shailer Park, don't miss your chance to secure this extraordinary landholding —contact Melinda Lee-Ball and Luisa Sargent today for more information. We hope to see you at our first open home and enjoy a free coffee on us!

We have in preparing this advertisement used our best endeavours to

ensure the information contained is true and accurate but accept no responsibility and disclaim all liability in respect to any errors, omissions, inaccuracies or misstatements contained. Prospective purchasers should make their own enquiries to verify the information contained in this advertisement.

MORE DETAILS

Property ID	6E8HVG
Property Type	House
Land Area	1270 m2
Including	Air Conditioning
	Deck
	Dishwasher
	Outdoor Entertaining
	Floorboards
	Built-in-Robes
	Secure Parking
	Fully Fenced
	Remote Garage

Melinda Lee-Ball 0415 520 748

Licensed Real Estate Agent | melinda.leeball@ljhooker.com.au

Luisa Sargent 0439 599 080

Licensed Real Estate Agent | luisa.sargent@ljhooker.com.au

LJ Hooker Shailer Park (07) 3102 0829

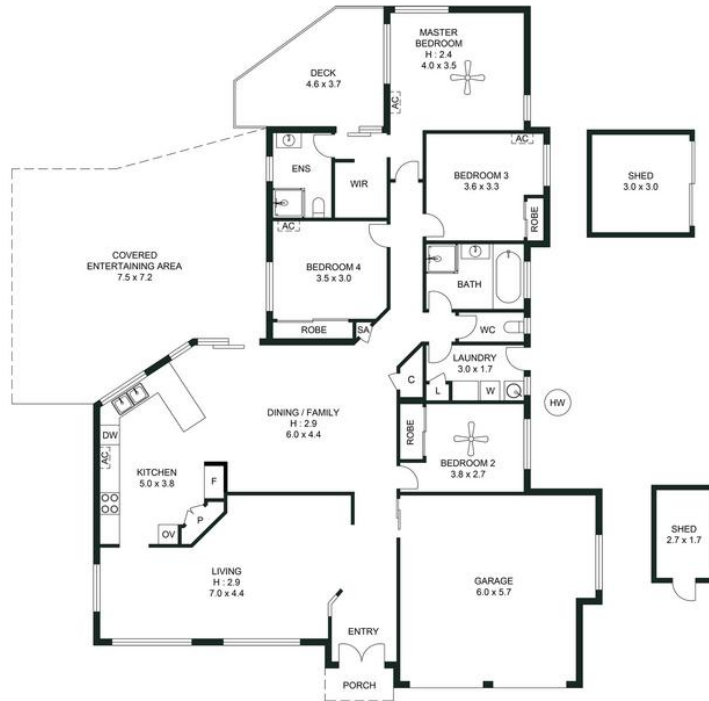
2/3 Mandew Street, SHAILER PARK QLD 4128

shailerpark.ljhooker.com.au | shailerpark@ljhooker.com.au



All information contained therein is gathered from relevant third parties sources.
We cannot guarantee or give any warranty about the information provided.
Interested parties must rely solely on their own enquiries.

 **LJ Hooker**



19 PARABURDO CRESCENT, SHAILER PARK

Plans should not be relied on. Interested parties should make and rely on their own enquiries.
The floor plan is not to scale; measurements are indicative and in metres. Exterior elements are not in position.



APPROXIMATE AREAS	
Internal Area	199 sqm
External Area	80 sqm
Total Area	279 sqm

